



402/88 Beaconsfield Parade ALBERT PARK

3 3 2

Melbourneâ€™s Premier Beachfront Penthouse at 88

\$4,100,000

Any new owner of the penthouse at 402 / 88 Beaconsfield Parade, Albert Park will have the immense good fortune of a home equipped with every imaginable mod con, plus the unrivalled benefit of a location that is second to none.

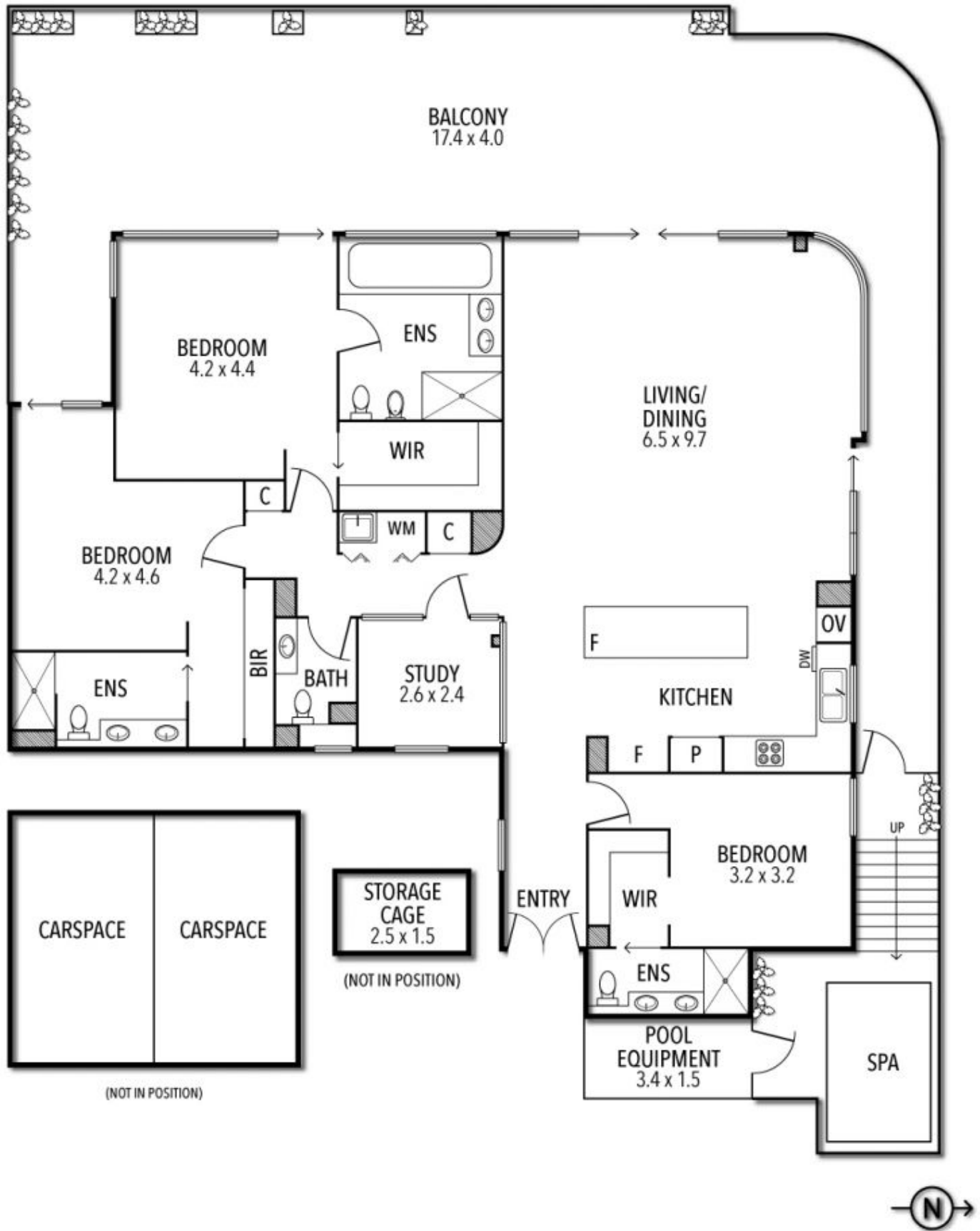
Peter Fein
0418528888
peter@wilsonagents.com.au

Located on the corner of Victoria Avenue across from the bay plus the myriad of cafes and high end restaurants that will add to the exquisite living this property offers.

Breathtaking views from every window at every angle the vision from St. Kilda and Elwood to the left through to Williamstown on the right is simply stunning. Enjoy a fresh coffee or glass of your favorite wine as you relax by the exclusive outdoor rooftop spa and feel like you are on top of the world.

Designed by 'Omicos One? Architecture, the class of this extremely functional layout is apparent with 320m2 of floor space incorporating an extraordinary combination of indoor / outdoor living.

402/88 Beaconsfield Parade, Albert Park



This plan has been prepared for marketing purposes only. Please note that all measurements & angles are approximate only, so it is strongly advised that all interested parties should undertake their own investigation into the accuracy of the supplied information. No representations or warranties of any nature whatsoever are given or attended.