



2 Gouldthorp Avenue MENTONE

3 2 2

Easy Living In This Modern Single Level Special

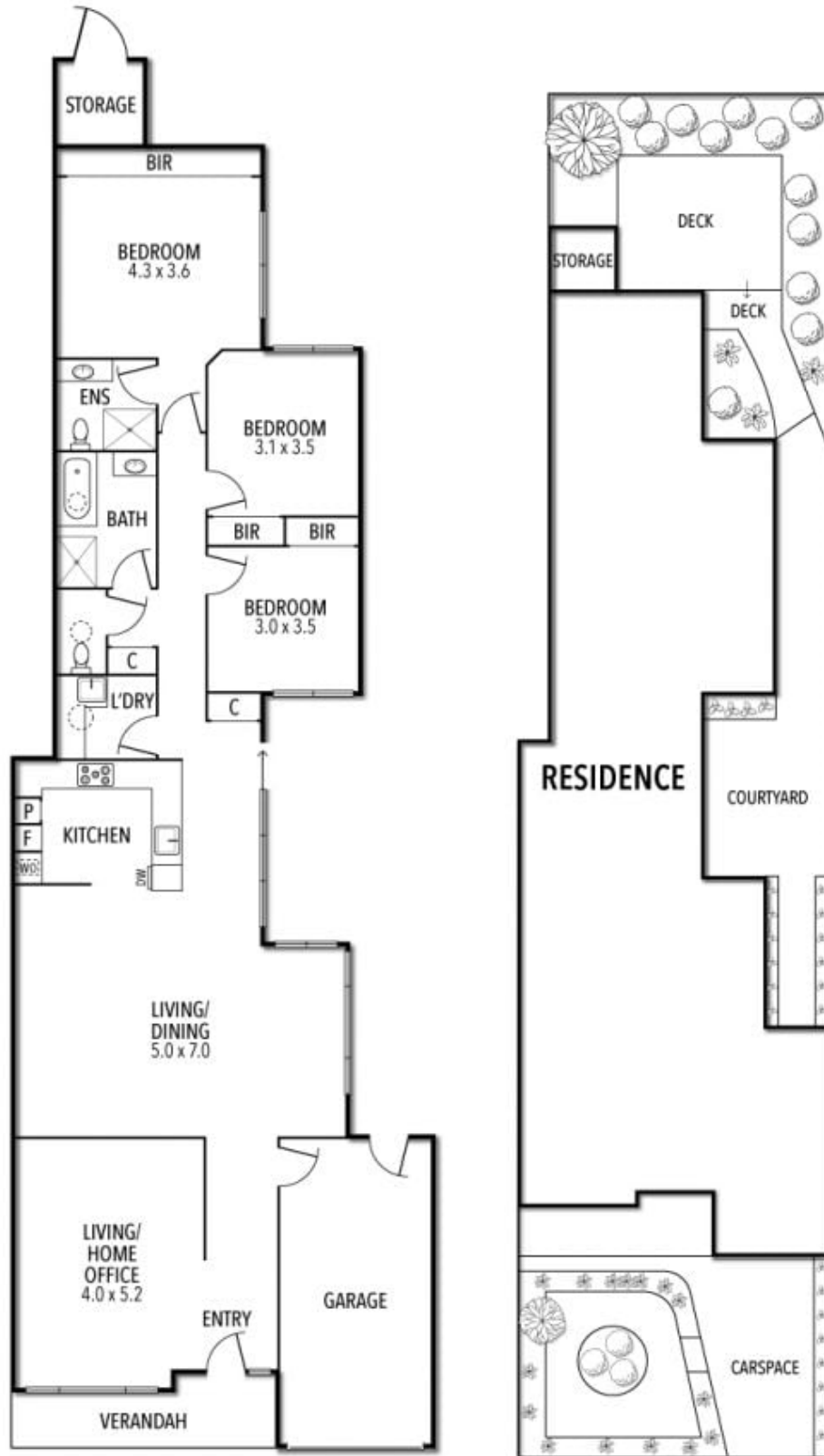
Located in a quiet cul-de sac location with the absolute best of Mentone Village just a short stroll away you will absolutely love the lifestyle this residence offers.

The light filled flexible floorplan offers multiple living zones, magnificent kitchen with an abundance of cupboards PLUS a superb work from home set up if required. The perfect floorplan includes zoned large bedrooms with robes, deluxe bathrooms and an incredible garden that makes outdoor entertaining pleasurable.

Loads of bonuses including remote garage with direct entry with 2nd carpark, central heating and cooling, timber flooring, video monitoring system and automated watering system for the garden surrounds.

Peter Fein
0418528888
peter@wilsonagents.com.au

2 Gouldthorpe Avenue, Mentone



This plan has been prepared for marketing purposes only. Please note that all measurements & angles are approximate only, so it is strongly advised that all interested parties should undertake their own investigation into the accuracy of the supplied information. No representations or warranties of any nature whatsoever are given or attended.