



7/25 Mayfield Street ST KILDA EAST

2  **1**  **2** 

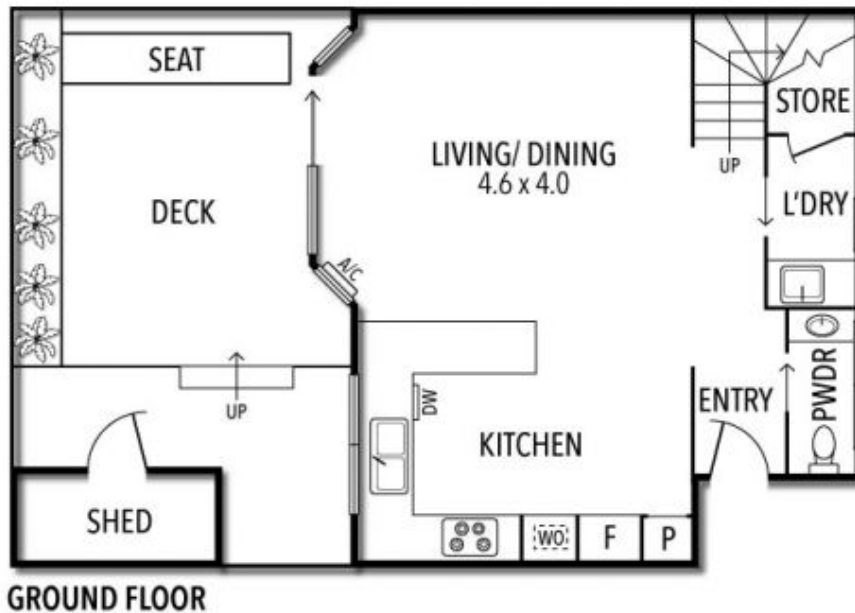
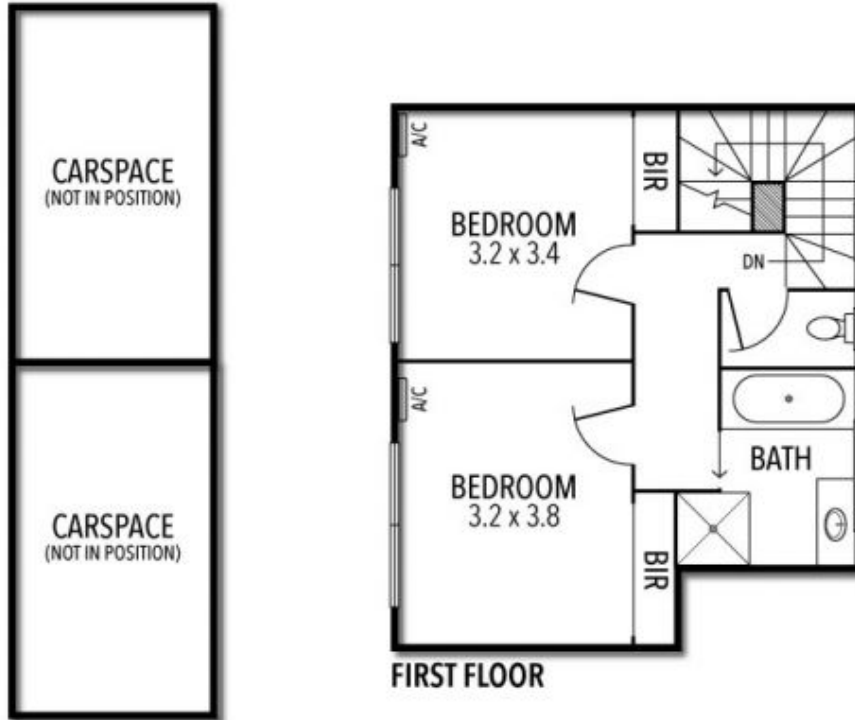
Secluded, Spacious and Bright in Vibrant St Kilda East

Nestled amidst lush greenery, away from the street, this two-story brick townhouse in sought-after St Kilda East offers an exceptional opportunity for both starting anew or making a savvy investment. Boasting a seamless open-plan design, the ground floor unfolds into a spacious living and dining area, flowing effortlessly onto a large private alfresco deck. The expansive kitchen, complete with a dishwasher, facilitates easy entertaining, while a conveniently located laundry and powder room add practicality to the downstairs space. Upstairs, two generously sized bedrooms adorned with built-in robes are complemented by a centrally positioned bathroom featuring a separate bath. Throughout, split-systems, ceiling fans and central heating ensure year-round comfort, while off-street parking for two vehicles adds convenience to city living. Situated in an enviable location only a moments' walk from Green Meadows Gardens, residents can indulge in the vibrant offerings of Ripponlea Village and Carlisle Street, just a leisurely stroll away, providing an abundance of shopping, dining, and transport options to explore.

Joey Eckstein
0419419199
jeckstein@wilsonagents.com.au

Peter Fein
0418528888
peter@wilsonagents.com.au

7/25 Mayfield Street, St Kilda East



This plan has been prepared for marketing purposes only. Please note that all measurements & angles are approximate only, so it is strongly advised that all interested parties should undertake their own investigation into the accuracy of the supplied information. No representations or warranties of any nature whatsoever are given or attended.