



## 515 Inkerman Street ST KILDA EAST

5 3 4

### Dual Delight. Two free Standing Homes on 870sqm

Step into a world of endless possibilities with this rare find: two distinct free-standing homes standing proudly on 870 sqm of prime real estate. The first, Residence 1, exudes timeless charm with its period architecture, featuring two bedrooms plus a sunroom, generous living spaces, and a wealth of classic period features.

Venture further to Residence 2, boasting a single-level villa layout designed for seamless living. Featuring three bedrooms, two bathrooms, and a remote garage offer the epitome of contemporary convenience. Both Residences are surrounded by beautiful garden settings.

Whether you're drawn to the idea of a dual-income investment, the flexibility of multi-generational living, living in one while renting out the other or simply owning two unique properties, this is an opportunity brimming with potential.

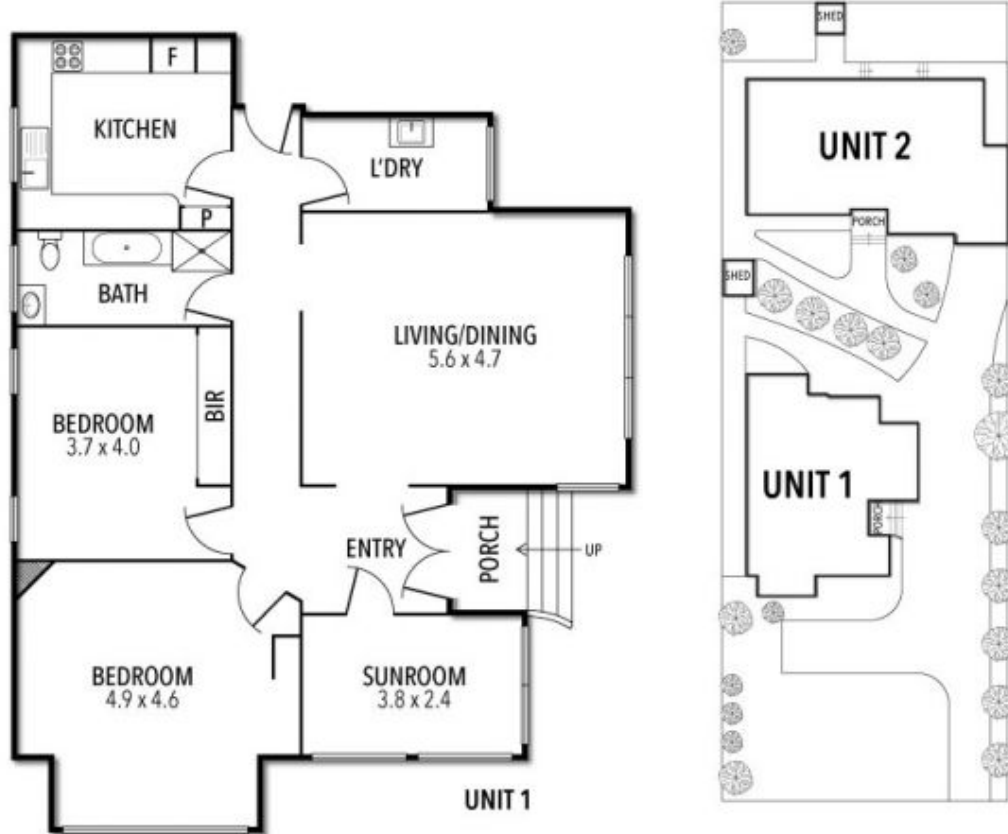
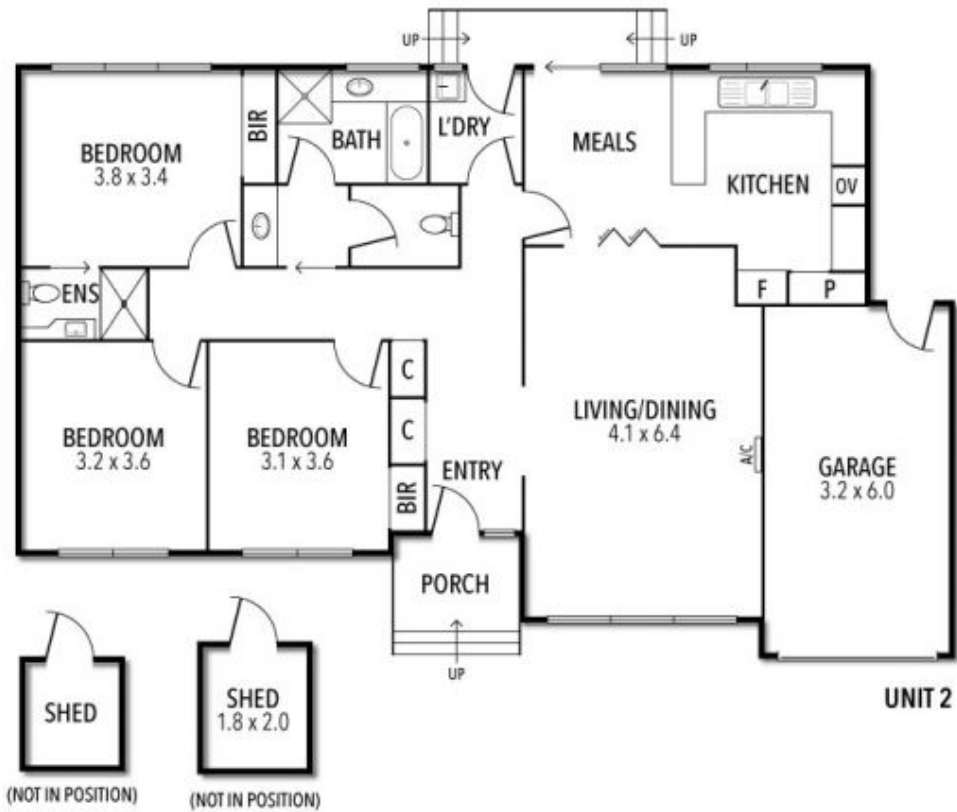
Possible development site STCA

Note Land Size: 17.68m x 49.22m approx..

Joey Eckstein  
0419419199  
jeckstein@wilsonagents.com.au

Peter Fein  
0418 528 888  
peter@wilsonagents.com.au

## 515 Inkerman Street, St Kilda East



This plan has been prepared for marketing purposes only. Please note that all measurements & angles are approximate only, so it is strongly advised that all interested parties should undertake their own investigation into the accuracy of the supplied information. No representations or warranties of any nature whatsoever are given or attended.