

Entry via
Bailey Avenue



3/155 Glen Eira Road ST KILDA EAST

2 1 1

A Fabulous Single Level Lifestyle Awaits - Entry Via Bailey Ave

In ready to just shift in condition, this delightful 2 bedroom fully renovated villa located only metres to the fabulous Ripponlea Village is bound to impress. The property is peaceful and has street frontage to Bailey Avenue. It comprises:

- Generous living space with polished timber floors and north facing aspect,
- Deluxe kitchen with quality gas appliances, stone benchtops and an abundance of cupboards,
- Both bedrooms are large with built in robes,
- Superb bathroom network with separate bath, shower, wc, and separate laundry.
- Undercover car port with shed.

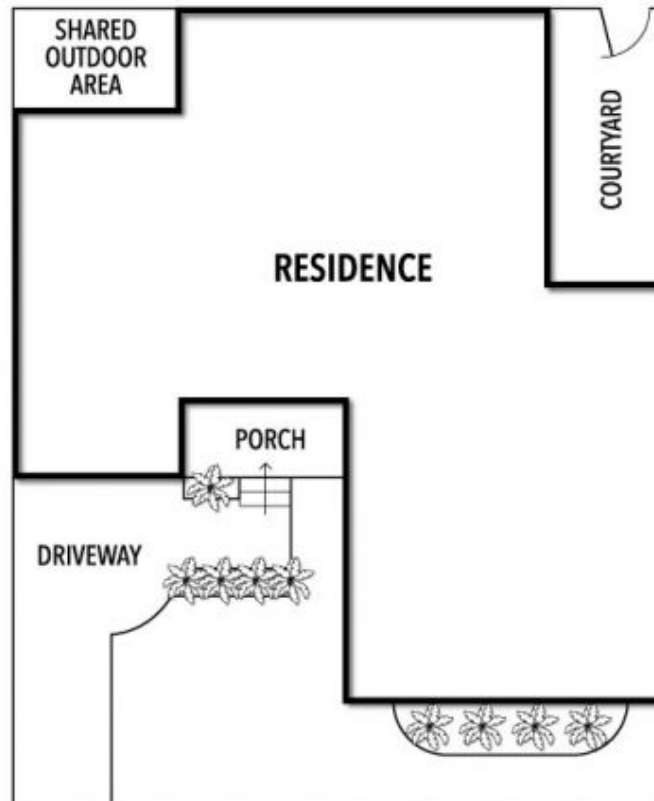
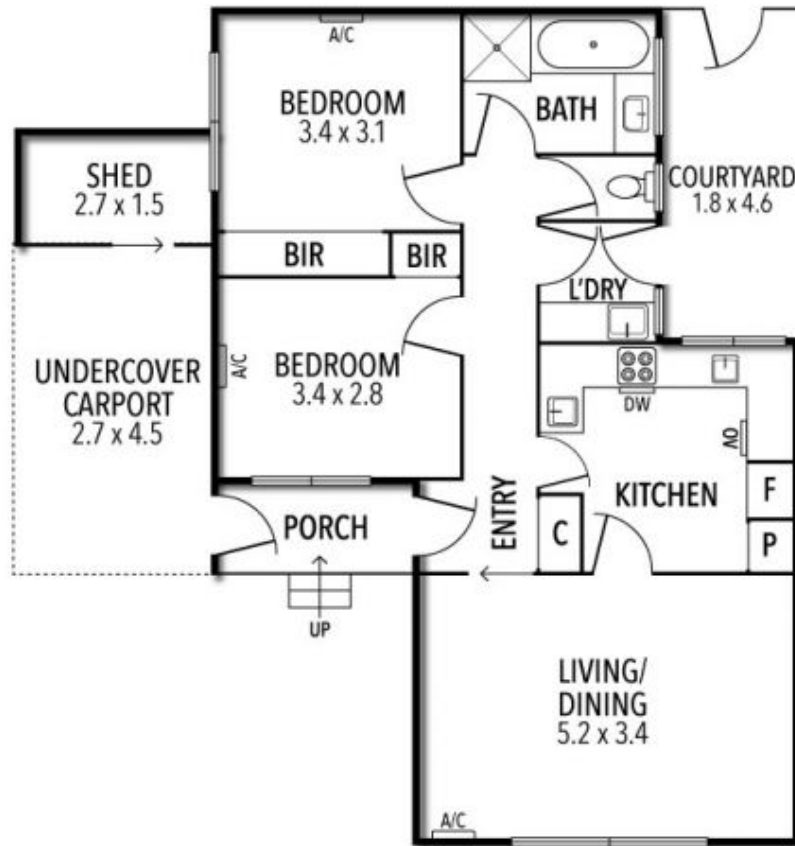
Added bonuses include private courtyard, split system air conditioning, ducted heating and tasteful décor throughout.

Joey Eckstein
0419419199
jeckstein@wilsonagents.com.au

Norma Evans
0422844666
nevans@wilsonagents.com.au



3/155 Glen Eira Road, St Kilda East



This plan has been prepared for marketing purposes only. Please note that all measurements & angles are approximate only, so it is strongly advised that all interested parties should undertake their own investigation into the accuracy of the supplied information. No representations or warranties of any nature whatsoever are given or attended.