

23 Attley Grove ST KILDA EAST

3 1 2

The perfect street with planning permit for 2 new homes

Situated on a superb block of 484 square metres approx. in a cul-de-sac that's full of period homes is an opportunity to purchase this 6 room solid brick residence or redeveop the site with plans and permits ready to go.

Some of the well-preserved features include traditional barley twist columns, arches and a tessellated-tiled front veranda, decorative ceilings, leadlight windows and timber-panelled entry.

Superb block orientation with a large north / west-facing rear garden with room to extend or redevelop (Permit issued).

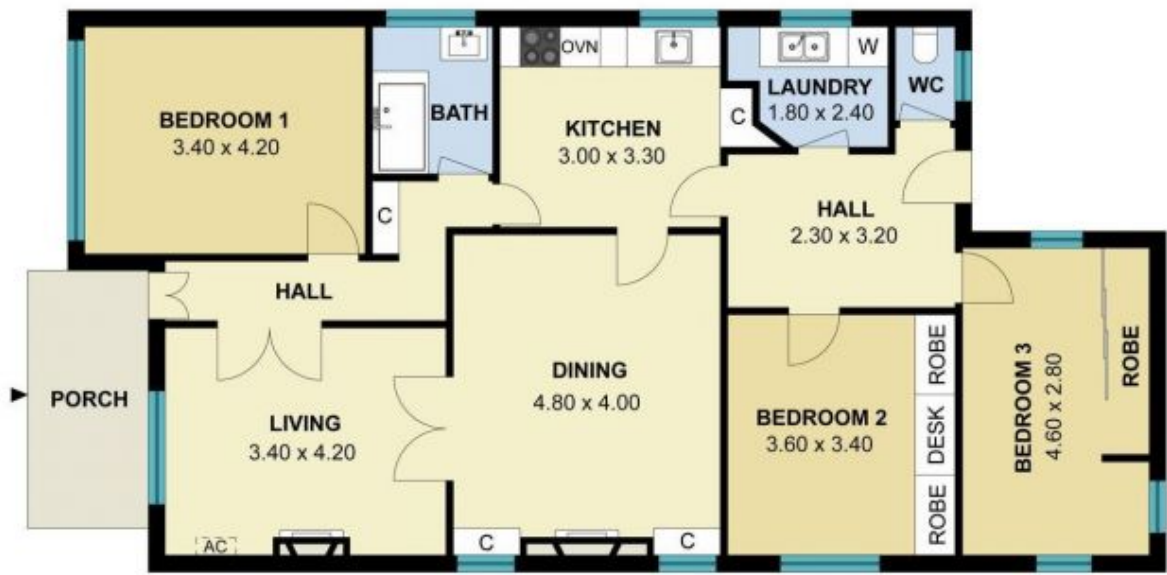
Once you've worked your magic, the home is poised to become a head-turning Spanish beauty. 5-star convenience at every turn with buses, Ripponlea Village and Station, Attica Restaurant, cafes, food stores, boutiques and excellent schools including Caulfield Grammar within walking distance.

Joey Eckstein
0419419199
jeckstein@wilsonagents.com.au

Peter Fein
0418528888
peter@wilsonagents.com.au



SITE PLAN



23 Attley Grove, St Kilda East

The site plan and floor plan are not to scale; measurements are indicative and in metres. Bushes and trees are placed for illustration purposes. Plans should not be relied on. Interested parties should make and rely on their own enquiries.