



## 8/8 Meadow Street ST KILDA EAST

1 1 1

### Oversized Living In Gorgeous Garden Complex

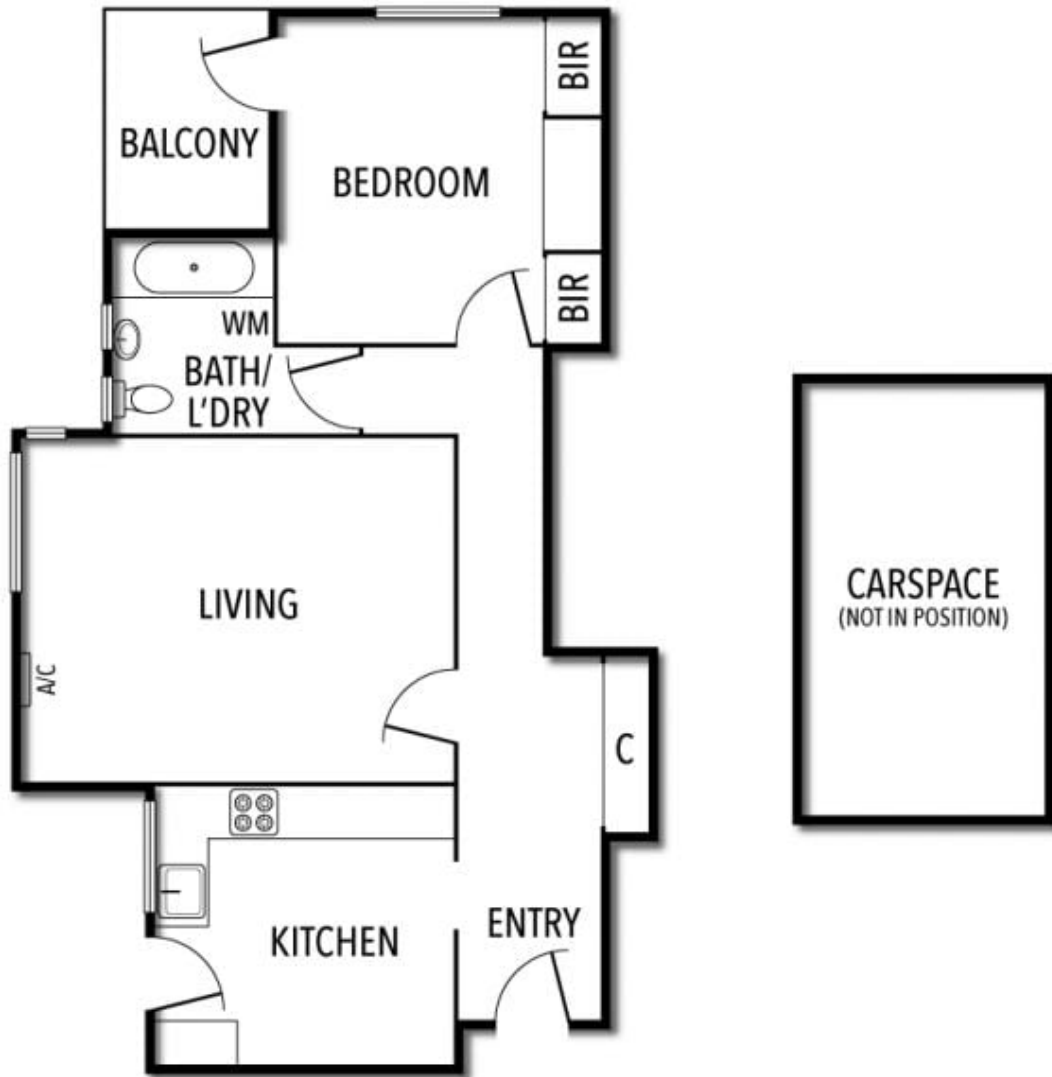
**\$ 413,000**

Stroll down the central path of a classic garden complex to discover this wonderfully oversized first-floor apartment set to the private and peaceful rear of the block. Brimming with charm and offering scope for contemporary renewal, a traditional layout arranged off a main hallway presents a generous living/dining room (gas heater & reverse-cycle a/c) and a large separate kitchen with ample space to dine (gas cooking), while the bright bedroom (built-in robes & ceiling fan) leads out to a corner balcony blessed with beautiful morning sunshine. Outstanding period proportions and a prized position close to trams, Greenmeadows Gardens and the Carlisle St café/cuisine scene are further enhanced by leafy communal gardens ideal for leisurely relaxation and alfresco enjoyment with friends or family. Includes undercover off-street car space, bathroom with shower/bath and laundry taps, handy hallway storage and solid timber floors.

Mia Chen  
0402251450  
MChen@wilsonagents.com.au

Joey Eckstein  
0419419199  
jeckstein@wilsonagents.com.au

8/8 Meadow Street, St Kilda East



This plan has been prepared for marketing purposes only. Please note that all measurements & angles are approximate only, so it is strongly advised that all interested parties should undertake their own investigation into the accuracy of the supplied information. No representations or warranties of any nature whatsoever are given or attended.