



16/50 Carlisle Street ST KILDA

1 1 1

Affordable pearl so close to the oyster!

This beautiful, north-facing St Kilda apartment features unobstructed views over the treetops and newly fitted charcoal slate flooring throughout.

With Carlisle Street and St Kilda Road trams a few metres away, it's a hop skip jump to every amenity imaginable including St Kilda beach, Acland Street cafes, Fitzroy Street restaurants, Luna Park and numerous entertainment venues.

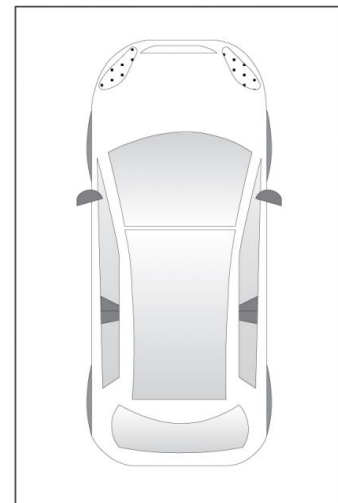
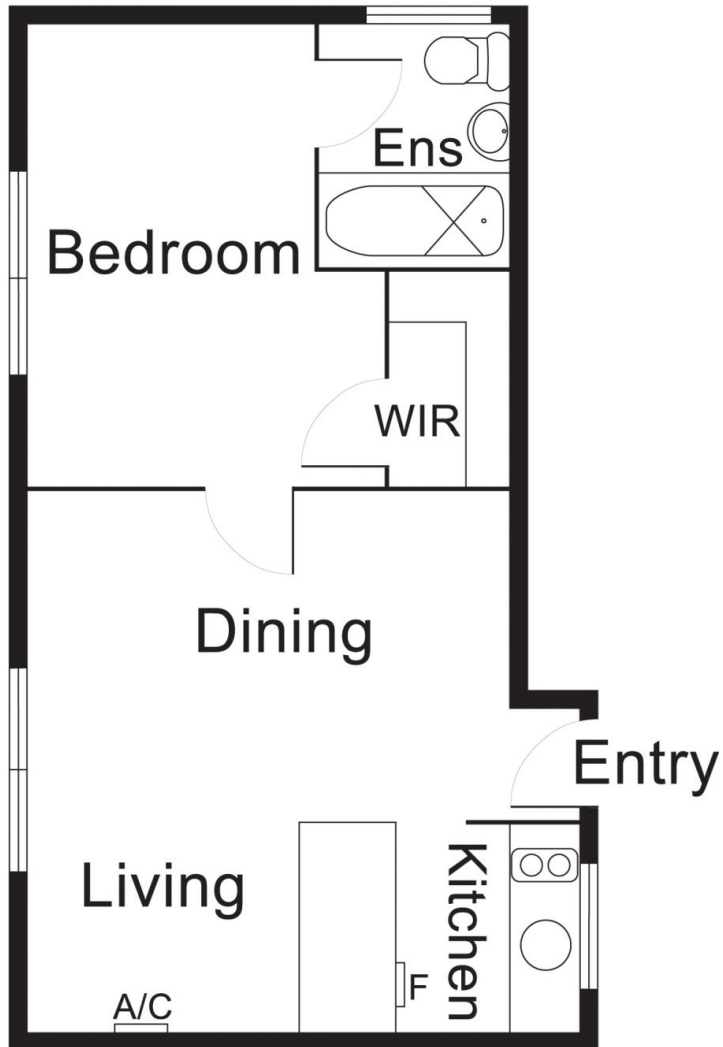
Comprising spacious open-plan kitchen and living with huge bench space, reverse-cycle air-conditioning, ceiling fans in living and bedroom plus panoramic north-facing tree-top views, it is the perfect low-maintenance home for those seeking a perfect combination of location and convenience.

The unit has its own separate ensuite with shower over bath and laundry facilities on site and is part of an established, boutique complex, with low owner's corporation fees and comes complete with a convenient, secure undercover car space with easy remote access.

Graeme Wilson
0418315645
gwilson@wilsonagents.com.au

Peter Fein
0418528888
peter@wilsonagents.com.au

16/50 Carlisle Street, St Kilda



(not in position)