



3/6 Wando Grove ST KILDA EAST

2 1 2

100+ sqm of 1970â€™s Quality and Size

\$ 740,000

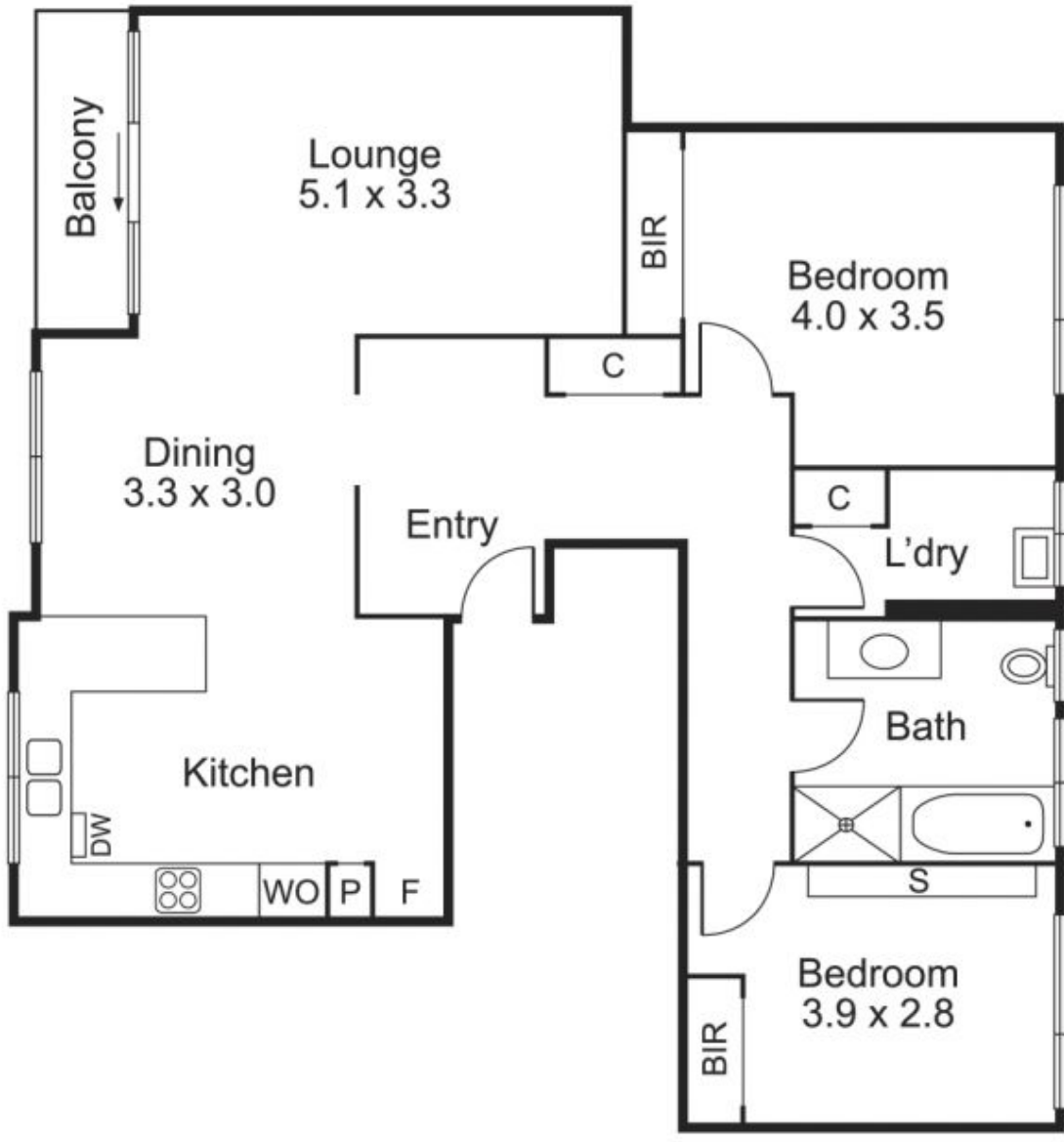
This huge, two bedroom apartment has been architecturally designed and comprehensively renovated, sparing no expense to present a most exquisite and tasteful inner-urban home of character. North facing natural light abounds in this memorable, older-style, first floor residence of unmistakable quality.

Peter Fein
0418 528 888
peter@wilsonagents.com.au

Revealing an impressive attention to detail, the home blends cool clean lines with an appreciation of its vast dimensions and original character as the large kitchen / meals hosts Euro appliances, generous stone benches all opening to a spacious lounge / dining with a balcony.

Added built in features include ducted gas heating, timber floors, secure intercom entry, two undercover parking spaces and a substantial storage unit.

This peaceful leafy streetscape in one of inner Melbourne's premier positions will reward you with easy access to cafes, a supermarket, city-bound public transport and some pretty



Carspace
(Not In Position)

Carspace
(Not In Position)

Storage
(Not In Position)

