



1/32 Burnett Street ST KILDA

3 1

â€œLILYVALEâ€• House sized garden apartment on prestigious St Kilda Hill.

A rare opportunity to purchase a charming maisonette, neighbouring with the "St Kilda Hill" elite mansions.

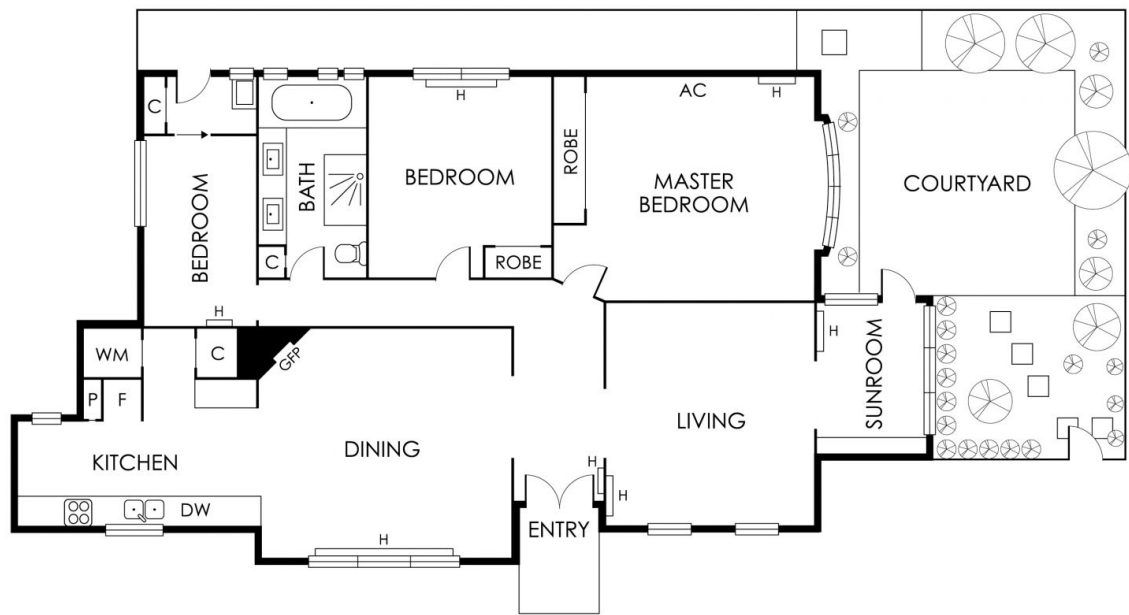
Quietly situated in the historical "Arts & Crafts" development Lilyvale C1920 is one of only 4 and this beautiful apartment is the only one with its own private garden entertaining area.

Dual entries either through your private garden or your Flemish double glass doors, this residence occupies the entire ground floor of approximately 185sqms in total, offering three bedrooms, separated lounge & dining areas as well as a gorgeous sunroom overlooking the leafy bluestone garden.

The oversized dining room with open fireplace flows seamlessly to the modified stainless steel gourmet kitchen with gas burner cooktop, double sinks, and abundance of built-in storages. In addition, the well-designed island bench opposite to the kitchen can be utilized

Mia Chen
0402251450
mia@wilsonagents.com.au





This plan has been prepared for marketing purposes only. Please note that all measurements & angles are approximate only, so it is strongly advised that all interested parties should undertake their own investigation into the accuracy of the supplied information. No representations or warranties of any nature whatsoever are given or intended.