



**1202/60 Lorimer Street DOCKLANDS**

2 1 1

## UNDER CONTRACT

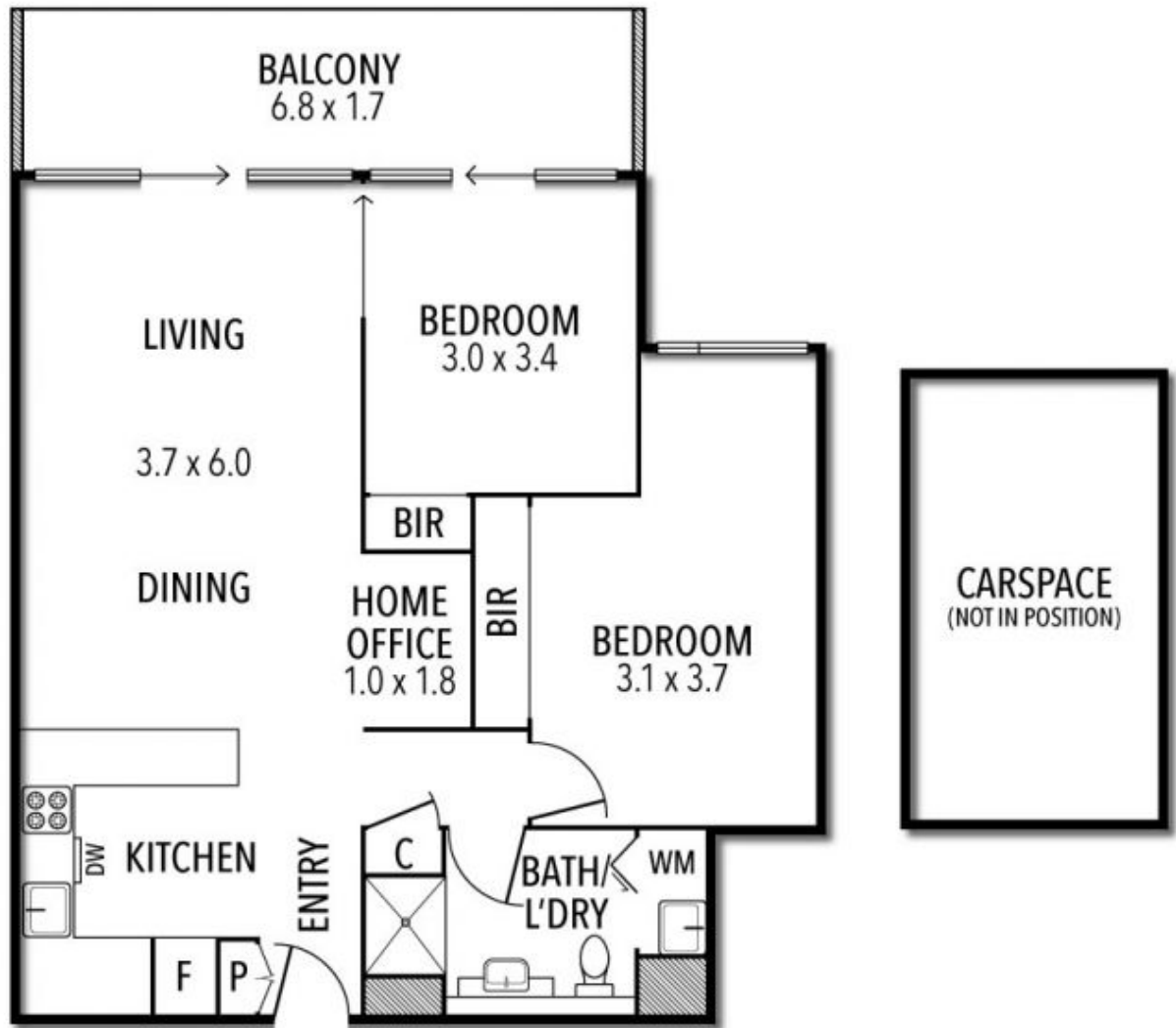
Boasting a stunning northern orientation, memorable views of the marina below, and all the creature comforts that the coveted Tower 2 residential complex is known for, this stylish and spacious 2 bedroom apartment is a dream haven in the Yarra's Edge precinct.

Highlights include an expansive north-facing lounge and dining zone which has sliding door access out to the northern balcony which exhibits the beautiful water vistas, eye-catching timber floors through the elegantly redesigned and renovated stone kitchen which offers a breakfast bar, wine storage, and Bosch appliances, a designated home office in the living zone and both bedrooms have BIR, 2nd bedroom has access to the same balcony, bathroom with European laundry, ducted heat/cool, secure car space, and access to RekDek facilities which include a gym, indoor pool, spa, steam room, and sauna.

Tower 2 residents also have exclusive access to their own community rooftop garden with BBQ facilities and uninterrupted marina and Port Philip Bay view.

Mia Chen  
0402251450  
MChen@wilsonagents.com.au

1202/60 Lorimer Street, Docklands



This plan has been prepared for marketing purposes only. Please note that all measurements & angles are approximate only, so it is strongly advised that all interested parties should undertake their own investigation into the accuracy of the supplied information.  
No representations or warranties of any nature whatsoever are given or attended.