



1210/83 Queens Road MELBOURNE

1 1 1

Breathtaking Panoramic Views to Albert Park Lake

Fabulous Bay and Albert Park Lake views form an enticing backdrop for this exclusive executive residence situated in St Kilda Road's 'Mansion' apartments. Stylish presentation complements the spectacular vistas with designer finishes and quality appliances throughout.

Open plan living and dining zone flanked by floor to ceiling windows in the living space to appreciate the sensational views.

The modern kitchen is streamlined and features an abundance of storage, Caesar stone bench top and stainless steel appliances; dishwasher, gas cooktop, rangehood and electric under bench oven.

Accommodation includes a luxurious master suite with a spacious king sized bedroom, a fully tiled ensuite bathroom with over-sized shower.

Other features include split system heating/cooling and a secure basement car park on title.

Resort style building facilities include a spectacular gas heated rooftop swimming pool with showers and bathroom facilities and enormous roof top gymnasium.

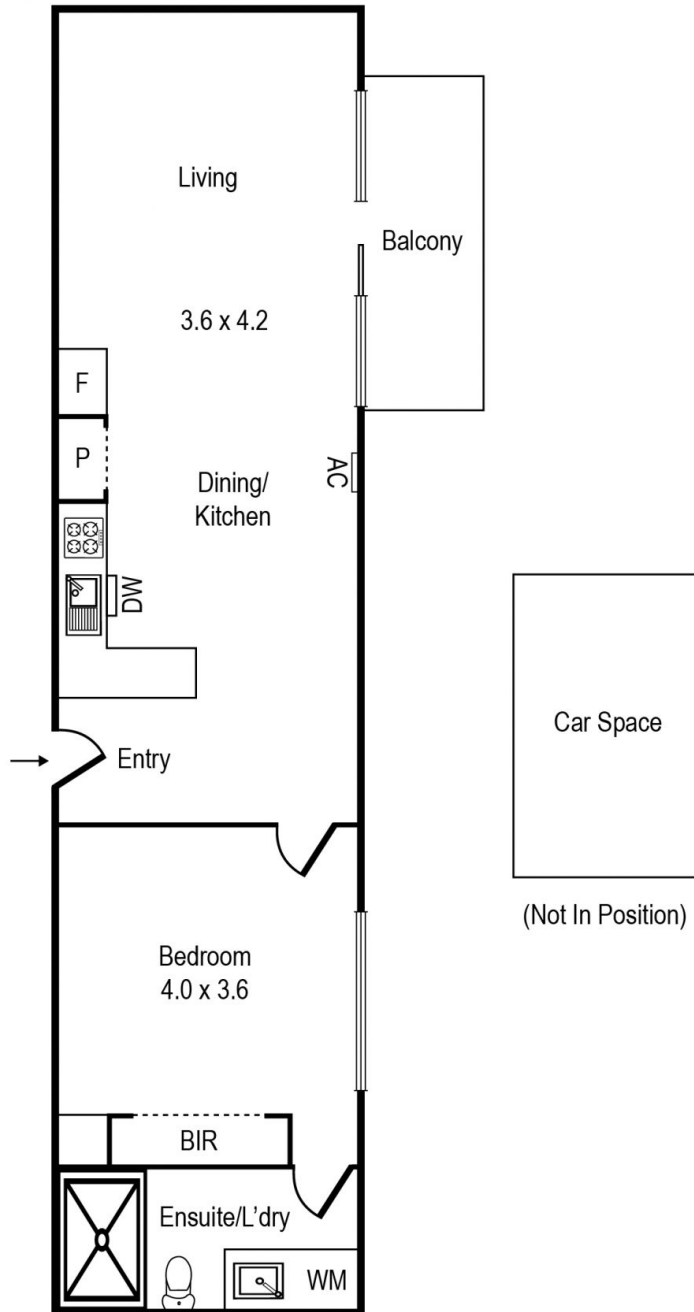
Graeme Wilson
0418315645
gwilson@wilsonagents.com.au

Mia Chen
0402251450
mia@wilsonagents.com.au



WILSON®

Unit 1210, 83 Queens Rd, Melbourne



Whilst every attempt has been made to ensure the accuracy of this floorplan, measurements of doors, windows, rooms and any other items are approximates only. The producer or agent cannot be held responsible for any errors, omissions or misstatements. This plan is for illustrative purposes only and should be used as such.