

Executors
Auction



19 Hughenden Road ST KILDA EAST

3 2 2

Corner-Block Classic Offering Options Galore

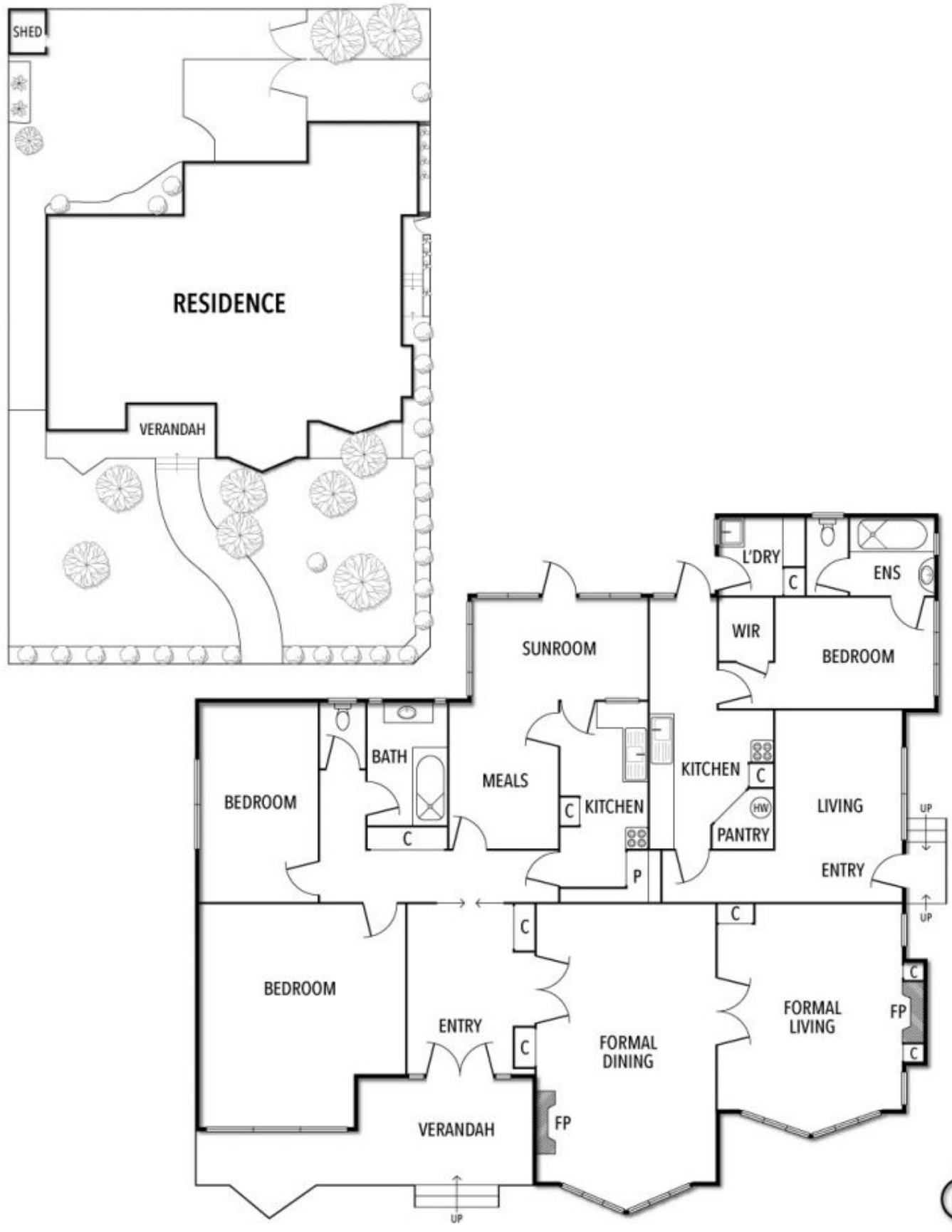
Behind its classic period façade, this substantial home on a generous corner block of 745sqm (approx.) is an absolute rarity for its incredibly oversized dimensions, north-facing rear and potential to create a dream family dwelling. Buyers are sure to recognise the future potential of original-condition interiors ripe for renewal or comprehensive renovation befitting the prime position moments to local buses, Dandenong Rd trams, excellent schools and Alma Village shops/cafés (STCA). With the main residence comprising huge living and dining rooms (open fireplaces), kitchen, light-filled family/meals and two large bedrooms, the other (enjoying a separate entrance) is a 1-bedroom abode of sizeable proportions ideal for teenager use or added income stream as a rental. Ample off-street parking, scope to live in or let out and endless possibilities point to a prime opportunity for the astute home buyer or investor.

NB. Approved plans and permits for dual townhouse development to the rear of the property.

Joey Eckstein
0419419199
jeckstein@wilsonagents.com.au

Peter Fein
0418528888
peter@wilsonagents.com.au

19 Hughenden Road, St Kilda East



This plan has been prepared for marketing purposes only. Please note that all measurements & angles are approximate only, so it is strongly advised that all interested parties should undertake their own investigation into the accuracy of the supplied information. No representations or warranties of any nature whatsoever are given or attended.