



2702/70 Lorimer Street DOCKLANDS

2 2 2

EOI closing at 4pm on 24th June 2022

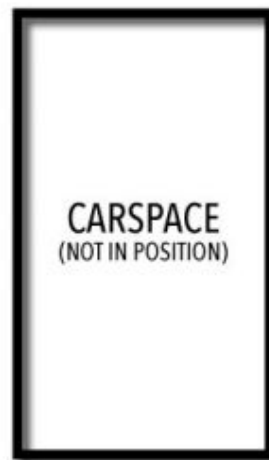
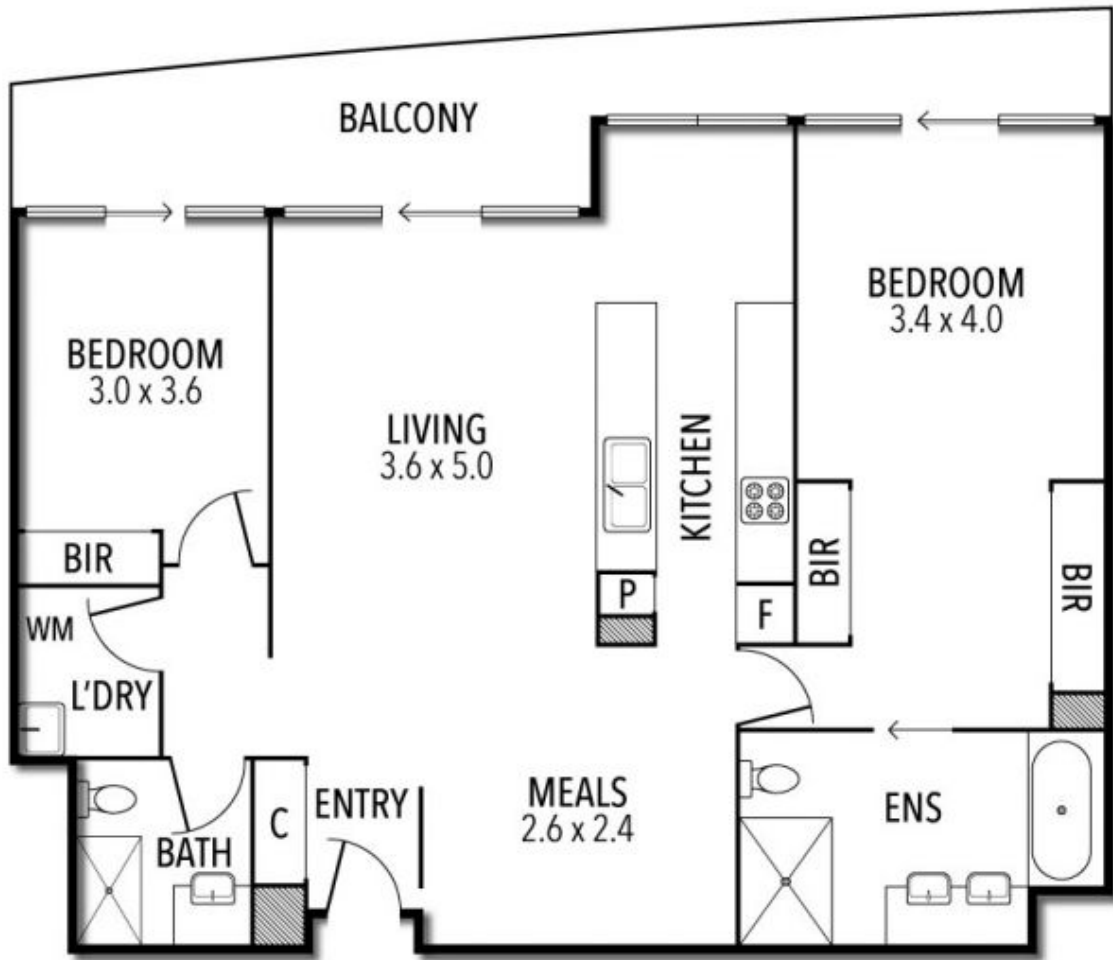
Perfect in every way is this two bedroom, two bathroom residence in Tower 3 of Yarra's Edge featuring north facing sunny views over the Yarra and CBD.

Feature of this apartments include:

- Generously proportioned living room and separate dining space,
- Full width terrace leading to all rooms and perfect for entertaining,
- The high standard kitchen is just perfect with a long breakfast bar, gas cooking and stainless steel appliances,
- Main bedroom is an excellent size and includes dual mirrored BIRs and a double vanity ensuite,
- Spacious 2nd bedroom with BIRs,
- Striking central bathroom,
- Brand-new carpet,
- Separate laundry,
- 2 proper car spaces plus visitor parking.

Mia Chen
0402251450
MChen@wilsonagents.com.au

2702/70 Lorimer Street, Docklands



This plan has been prepared for marketing purposes only. Please note that all measurements & angles are approximate only, so it is strongly advised that all interested parties should undertake their own investigation into the accuracy of the supplied information. No representations or warranties of any nature whatsoever are given or attended.