



**19/458 St Kilda Road MELBOURNE**

2 1 1

### On Offer | The Blank Canvas

Located within the 'Rathgael' development this dual zoned 70's residence is a blank canvas waiting to be touched with a modern brush sitting on the doorstep of Melbourne's CBD.

Enter at the ground level of the residence and you're greeted to an open plan living area. The lounge and dining zone are light filled due to the large windows which give access to your own private North-East facing courtyard. The kitchen is in its original condition and is awaiting to be renovated to enhance it's potential.

Make your way upstairs to find 2 double bedrooms with built-in-robos, central bathroom and separate toilet

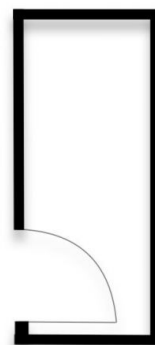
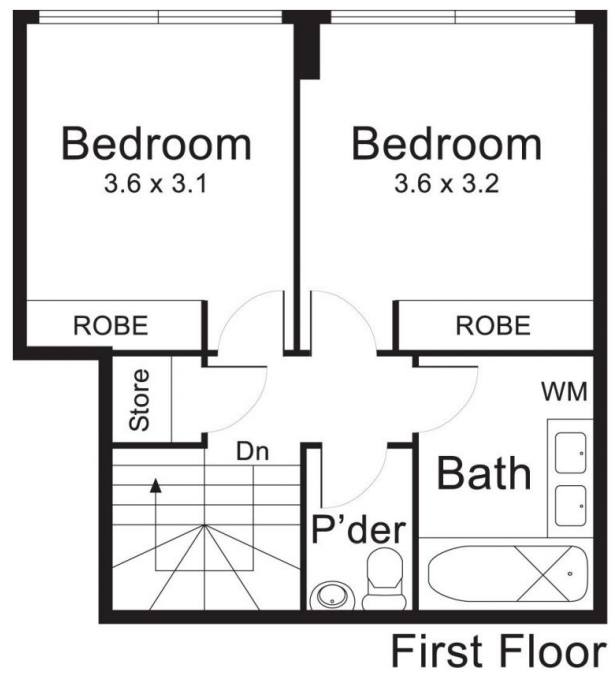
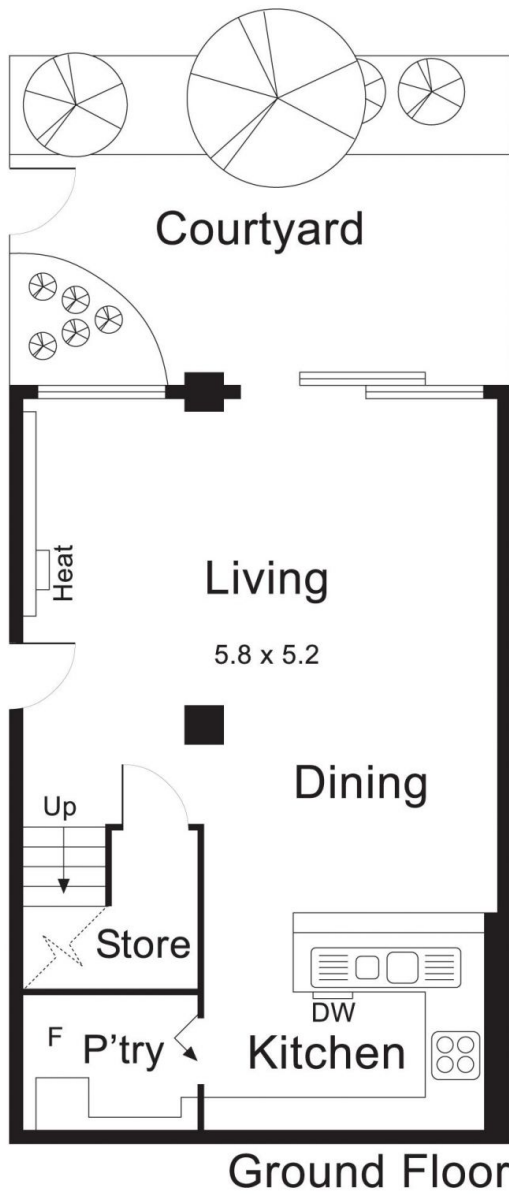
This residence also facilitates off street parking for 1 car and is one of the only residences in the building to have a secure lock up storage area.

Mia Chen  
0402251450  
[mia@wilsonagents.com.au](mailto:mia@wilsonagents.com.au)

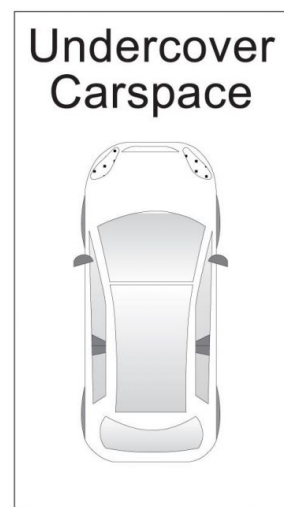




19/458 St Kilda Road, Melbourne



Secure Storage  
(not in position)



(not in position)