



**90 Wellington Street ST KILDA**

4 2 1

**Victorian Grandeur with Gorgeous Walled Garden!**

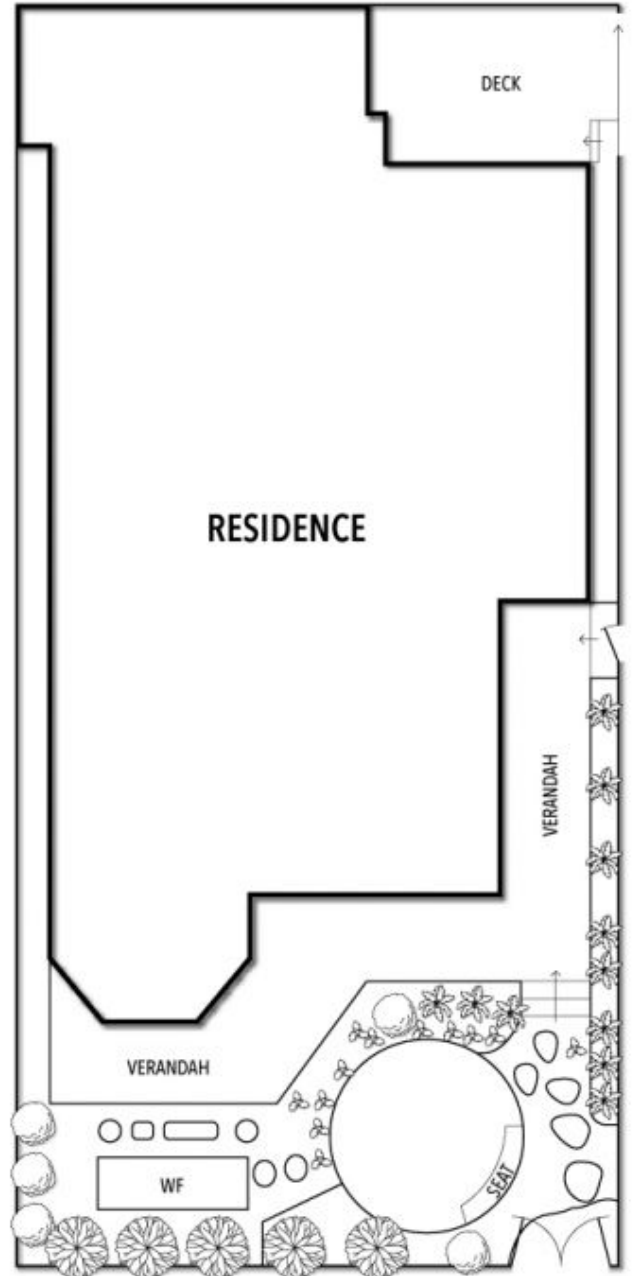
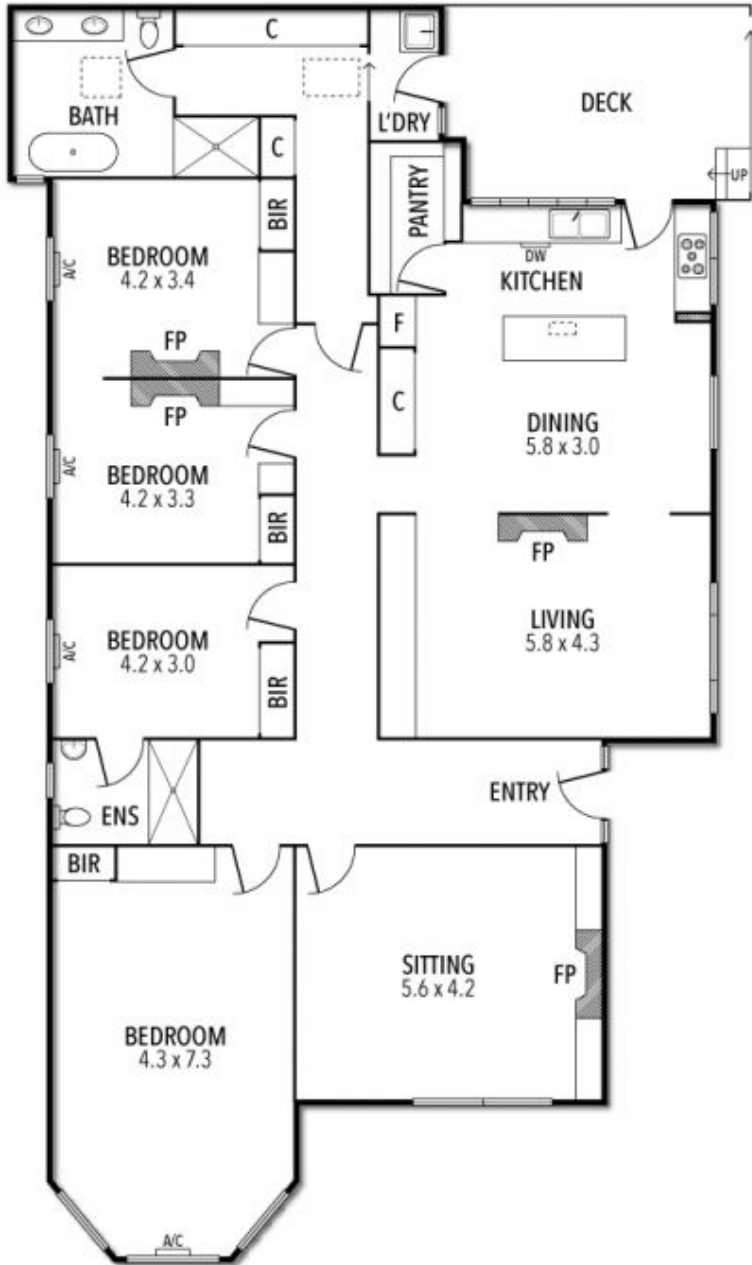
Showcasing the timeless elegance, a contemporary renovation completed in 2016 combined with its original Victorian heritage, this corner-block hawthorn brick home delivers renovated interiors of outstanding dimensions in a location ensuring a wonderful lifestyle. Comforted by a gas fireplace, the generous family domain is accompanied by a light-filled kitchen/dining room boasting timber benchtops, Falcon appliances, Miele dishwasher and a vertical garden backdrop, while an additional large living room (open fireplace) is positioned towards the front of the home. Capitalising on its coveted corner setting, a classic tessellated veranda wraps around to overlook a mature landscaped walled garden designed by the renowned Kate Seddon with fishpond water feature - the northerly orientation allowing for beautiful dappled sunshine throughout the day. Including four bedrooms (one with a private ensuite), the master enjoys palatial proportions and tranquil garden aspects. Ideal for discerning buyers seeking privacy and security in a low-maintenance setting brimming with charm and character, it is completed by hydronic heating, reverse-cycle a/c, ornately detailed high ceilings, timber floors and a laundry with outdoor access. Moments to cafés, trams and Alma Park plus Windsor's vibrant rail, retail

Graeme Wilson  
0418315645  
gwilson@wilsonagents.com.au

Mia Chen  
0402251450  
mia@wilsonagents.com.au



# 90 Wellington Street, Street Kilda



This plan has been prepared for marketing purposes only. Please note that all measurements & angles are approximate only, so it is strongly advised that all interested parties should undertake their own investigation into the accuracy of the supplied information. No representations or warranties of any nature whatsoever are given or attended.