



44/343 Beaconsfield Parade ST KILDA WEST

2 **2** **1**

"THE COURTYARD" - UNIQUE SPLIT LEVEL HOME WITH NORTHERN LIGHT & BAY VIEWS

Enclosed in a private oasis within "the Courtyard" building, this unique split level home is a haven of light and space. Renovated for modern taste in a solidly built block that's centred around an expansive courtyard with a pool and paved lounge area to soak in the sun.

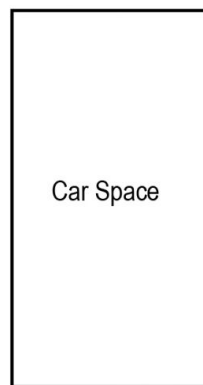
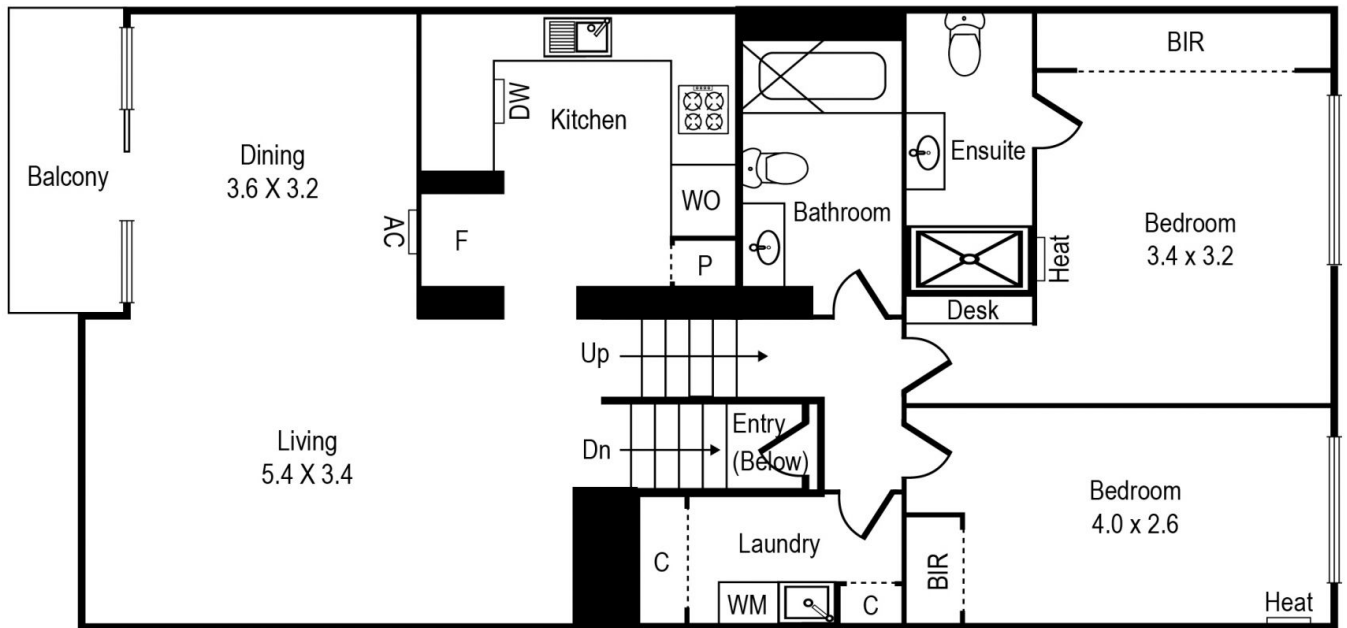
Via a secure elevator, this bright home instantly embraces you with northern light and Bay views across the width of the open plan lounge area. A generous stone kitchen with a full suite of stainless steel appliances including dishwasher is finished with soft close drawers and terrific storage. A master bedroom with his and her robes is served by a sparkling ensuite with floor to ceiling tiles, floating vanity and rainfall shower head. The second bedroom is served by a matching central bathroom with bath tub, separate laundry room, gated underground parking for one and a storage shed.

This unique homes standout feature is the fabulous balcony which provides uninterrupted views of St Kilda West beach, all the way down to Middle Park. On a closer scale the balcony overlooks the communal yard and pool.

If you do tire of your own pool, take just a few steps over the road to St Kilda foreshore and

Graeme Wilson
0418315645
gwilson@wilsonagents.com.au

Unit 44, 343 Beaconsfield Pde, St Kilda West



(Not in position)