



11 Verve Drive OFFICER

4 2 2

UNDER OFFER

\$ 684,000

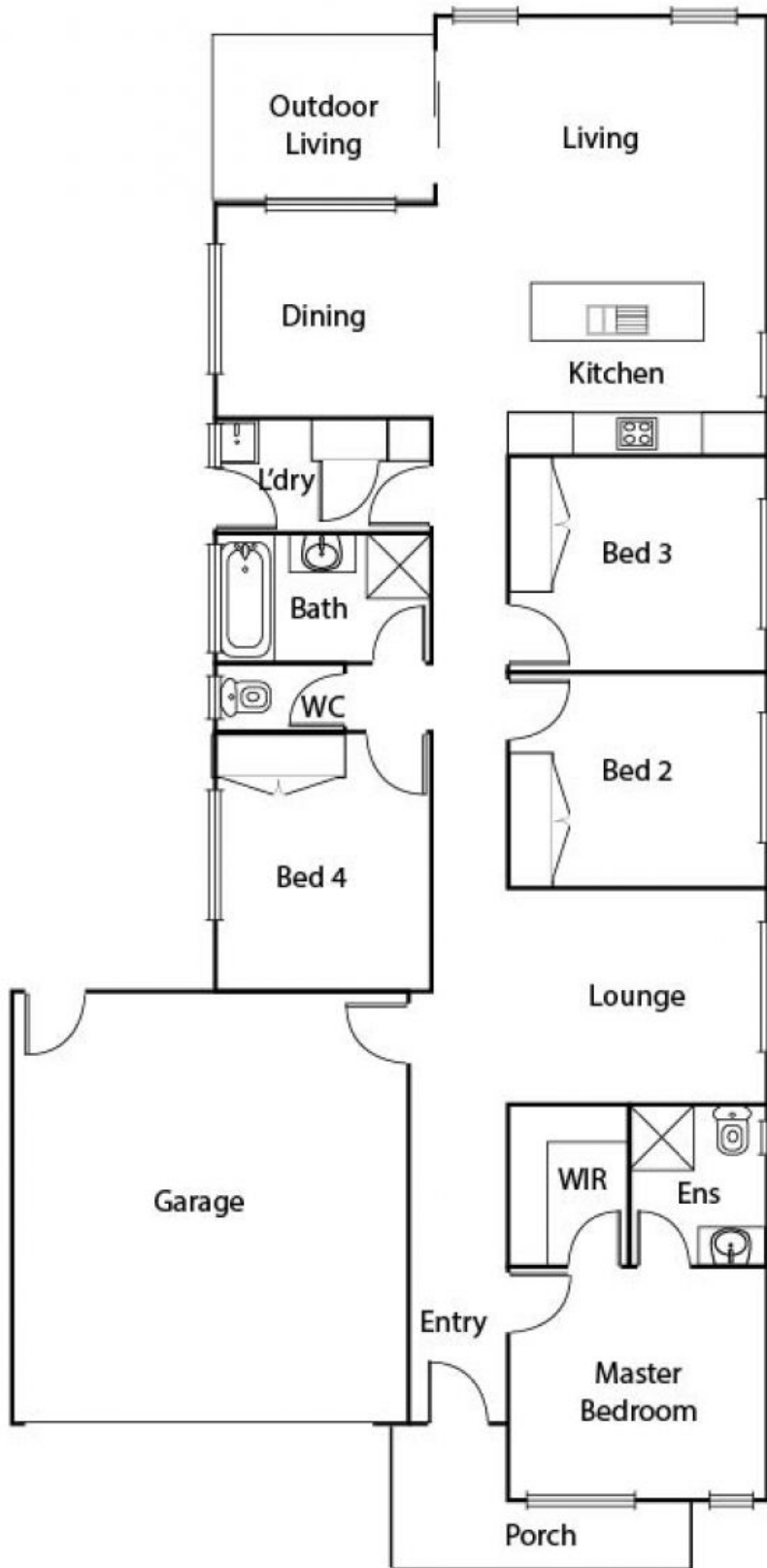
Live your best life in this solid, well located family home. Situated in Melbourne's South East Growth Corridor the area, along with your asset, will continue to grow with your family. Enjoying parks, daycare and schools all within walking distance and offering easy train and freeway access to inner Melbourne you can enjoy the best of both worlds with a spacious, stress free lifestyle without giving up inner-city convenience.

The house has been thoughtfully designed with 4 good size bedrooms (master with WIR and ensuite), double lock up garage, 2 separate living areas and a family sized dining space adjacent to the entertaining kitchen.

Amenities include; dishwasher, stainless steel appliances, split system heating and cooling, tiled living areas, bathtub in the main bathroom, robes throughout and a back yard large enough for pets and kids to play.

Barry Feldman
0410448277
bfeldman@wilsonagents.com.au

11 Verve Drive, Officer



Please note that all dimensions are approximate and that plans are indicative only and not drawn exactly to scale.
This plan is for illustrative purposes only and should only be used as such by any prospective purchaser.