



202/315 Beaconsfield Parade ST KILDA WEST

2 2 2

With Resort Style Living, The Sunsets Are Just The Beginning!

\$ 1,321,000

Fabulous 2nd floor, front 2-bedroom, beachfront apartment in coveted Camino Royale Building. All the facilities are on offer including Indoor swimming pool/steam room/spa & tennis court. Drive into 2 separate carparks, huge lock up storeroom & catch the lift to enter your own private oasis. master with walk in wardrobe & large ensuite, separate study, vast open plan living/dining, wide balcony with uninterrupted views and sunsets over St Kilda Harbour. Additional features include timber floorboards, stainless steel appliances, granite benchtops, RC aircon & Euro laundry.

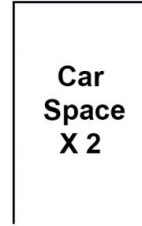
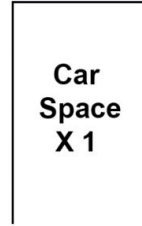
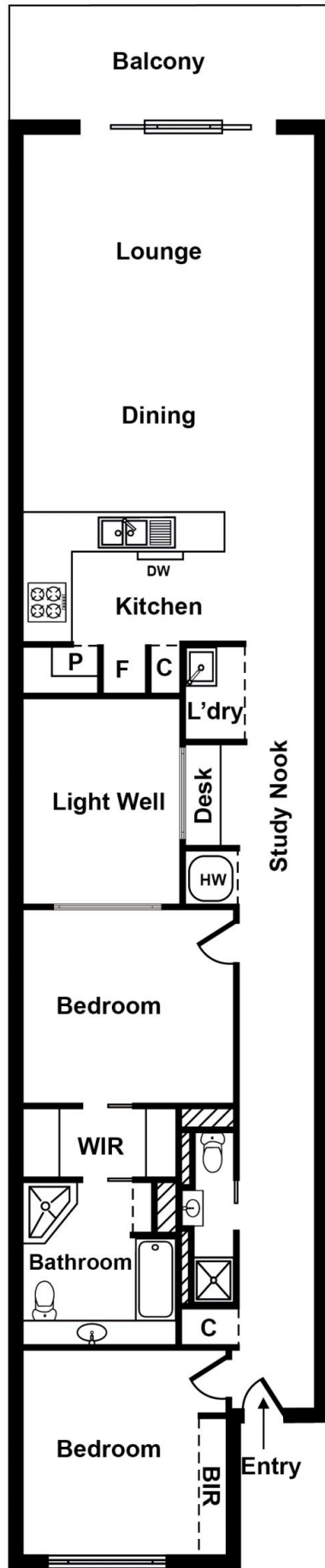
Graeme Wilson
0418315645
gwilson@wilsonagents.com.au

Jayden Gleeson
0415061366
jgleeson@wilsonagents.com.au



WILSON

Unit 202, 315 Beaconsfield Pde, St Kilda West



N

Whilst every attempt has been made to ensure the accuracy of this floorplan, measurements of doors, windows, rooms and any other items are approximates only. The producer or agent cannot be held responsible for any errors, omissions or misstatements. This plan is for illustrative purposes only and should be used as such.