



**4/1 Milburn Grove St Kilda East**

**2** **1** **2**

## Sensationally Spacious, Remarkably Rare

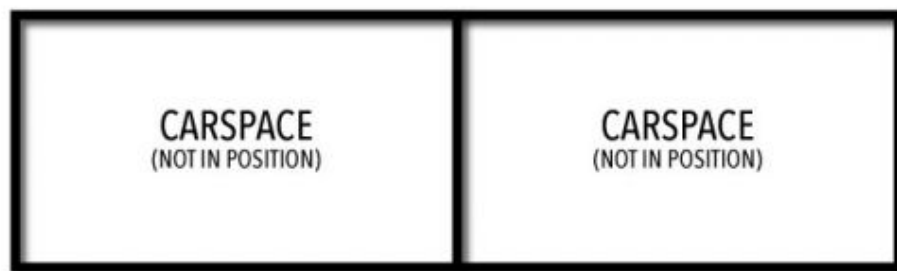
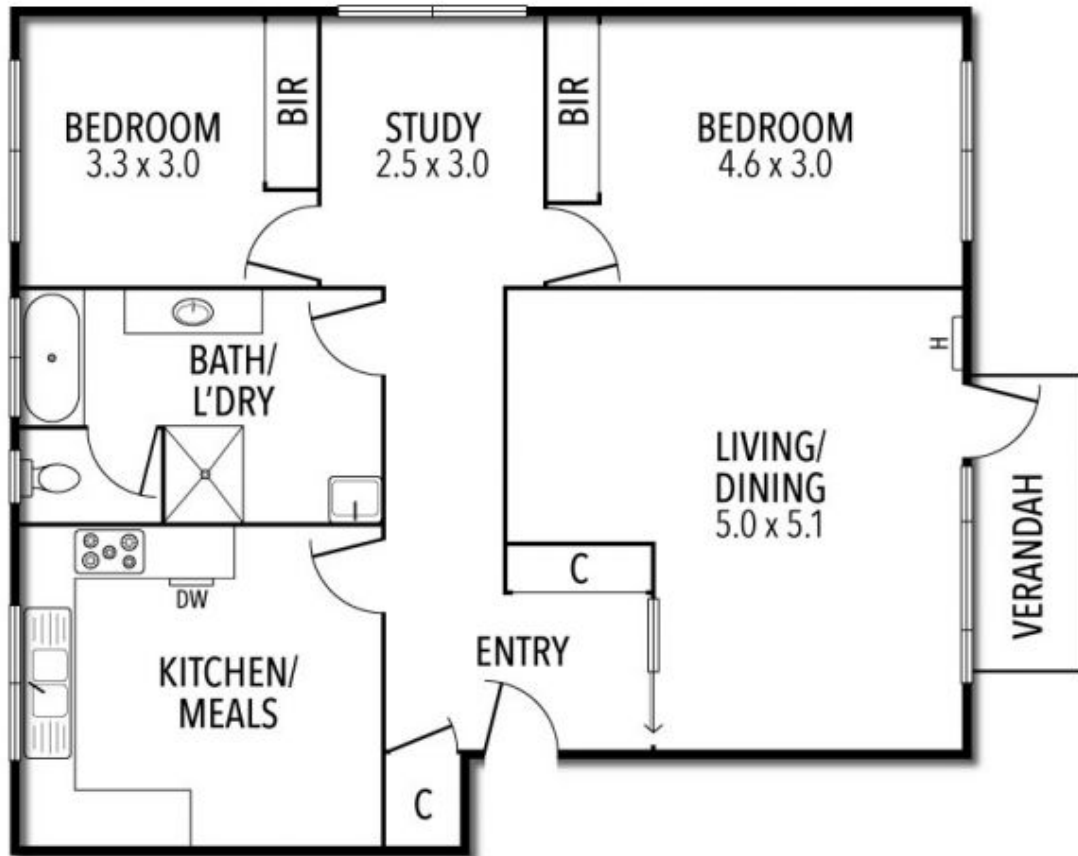
They sure knew how to build them big back in the day, so when a super-sized 70s sensation like this comes onto the market, you're going to want to act decisively to make it yours. Everything is great about it and so is the location with Greenmeadows Garden at the end of the road, buses just metres away, and trams, Carlisle Street, Balacalva Station and Elsternwick Village all within easy reach.

Beyond the wide entrance hall, the interior reveals a house-sized living and dining room extending to a covered balcony enjoying tranquil treed outlooks, a generous study enabling work-from-home flexibility, an enormous kitchen with a meals area, two king-sized bedrooms with built-in robes, and a central bathroom with bath, step-in shower, separate toilet and washing machine taps.

Peacefully positioned at the rear of a boutique block of just 6, the apartment offers the extra bonuses of 2 car spaces, heating, secure intercom entry, and beautiful terrazzo tiled communal areas as a shoutout to its era

Peter Fein  
0418528888  
[peter@wilsonagents.com.au](mailto:peter@wilsonagents.com.au)

## 4/1 Milburn Grove, St Kilda East



This plan has been prepared for marketing purposes only. Please note that all measurements & angles are approximate only, so it is strongly advised that all interested parties should undertake their own investigation into the accuracy of the supplied information.  
No representations or warranties of any nature whatsoever are given or attended.