



## 2/9 Lambeth Place ST KILDA

2 1 1

### ON OFFER | Great Flat in a Great Location.

Be immersed in the St Kilda lifestyle, with a generously sized ground floor apartment. Positioned in a block of 6 this residence is perfect for first homeowners or investors.

The kitchen has been positioned in the middle of the home, with adequate bench space and ample storage is large and light filled with a window through to the outdoor courtyard.

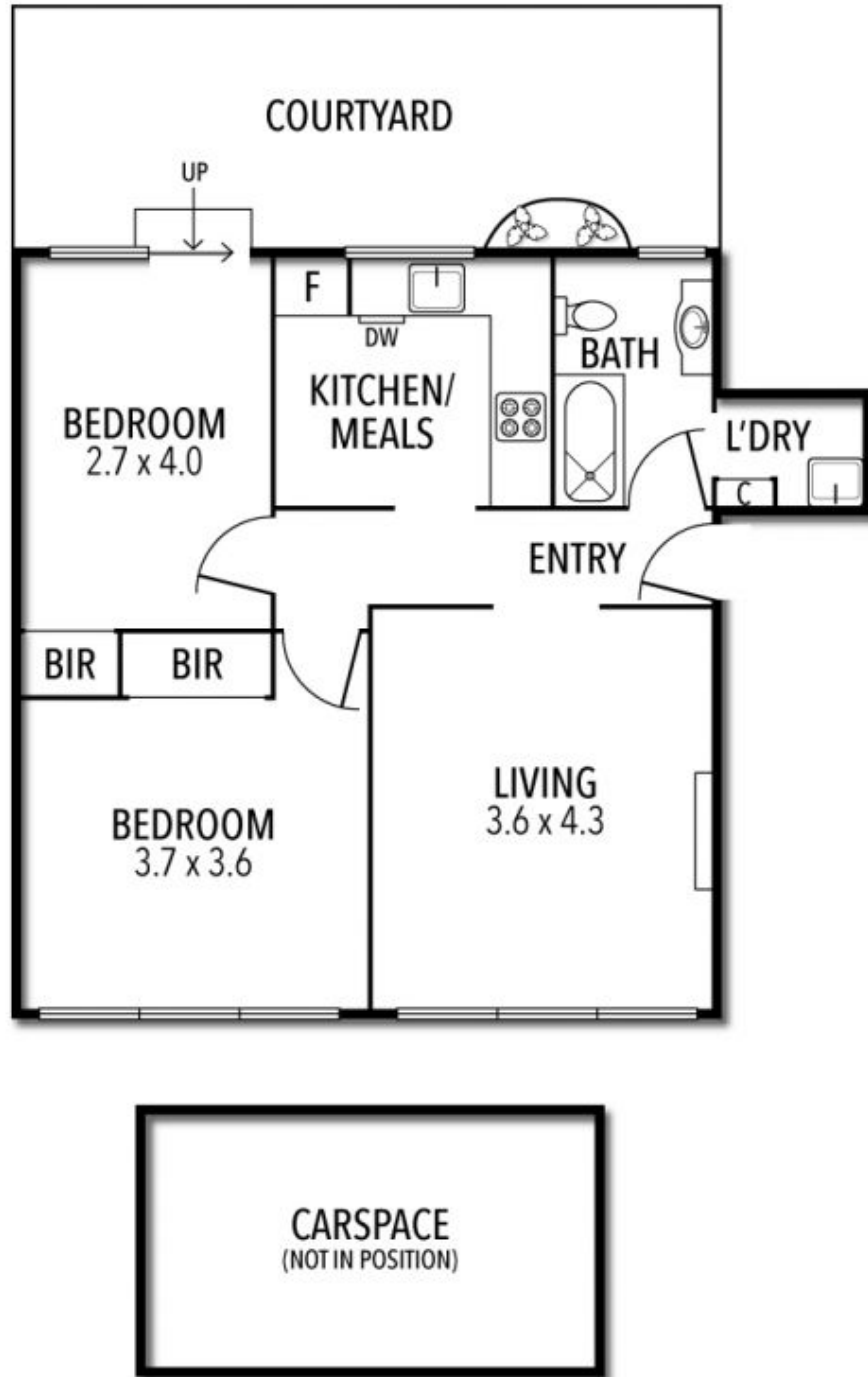
A large living area, with a North Facing windows, for all day sun. 2 generously sized bedrooms with built-in-robies. Off the master is the courtyard space, large and light-filled perfect for an outdoor entertaining area.

The home is also equipped with a modern bathroom and separate laundry, split system heating/AC and secure off-street parking.

Graeme Wilson  
0418315645  
gwilson@wilsonagents.com.au

Jayden Gleeson  
0415061366  
jgleeson@wilsonagents.com.au

2/9 Lambeth Place, St Kilda



This plan has been prepared for marketing purposes only. Please note that all measurements & angles are approximate only, so it is strongly advised that all interested parties should undertake their own investigation into the accuracy of the supplied information. No representations or warranties of any nature whatsoever are given or attended.