



**499B Inkerman Street ST KILDA EAST**

**3** **2** **2**

## Brand-New Elegance Meets Modern Excellence

Please advise the agent via email or phone call if you wish to have a private viewing.

Indulge your taste for the ultimate in high-end, low-maintenance luxury with this brand-new residence. Built to impress with the architectural finesse and signature style of Carter Grange, the contemporary home's spacious single-level design is smart, streamlined and sophisticatedly appointed.

Fashionable floors flow from the entrance hall to the spacious living and dining zone, which extends effortlessly outdoors to a fabulous timber deck for easy indoor-outdoor entertaining overlooking a private garden. Back inside, gather with family and friends around the extra-wide breakfast bar/central island bench in the stylish kitchen appointed with Bosch appliances and ample stone-topped bench space for meal preparation and presentation.

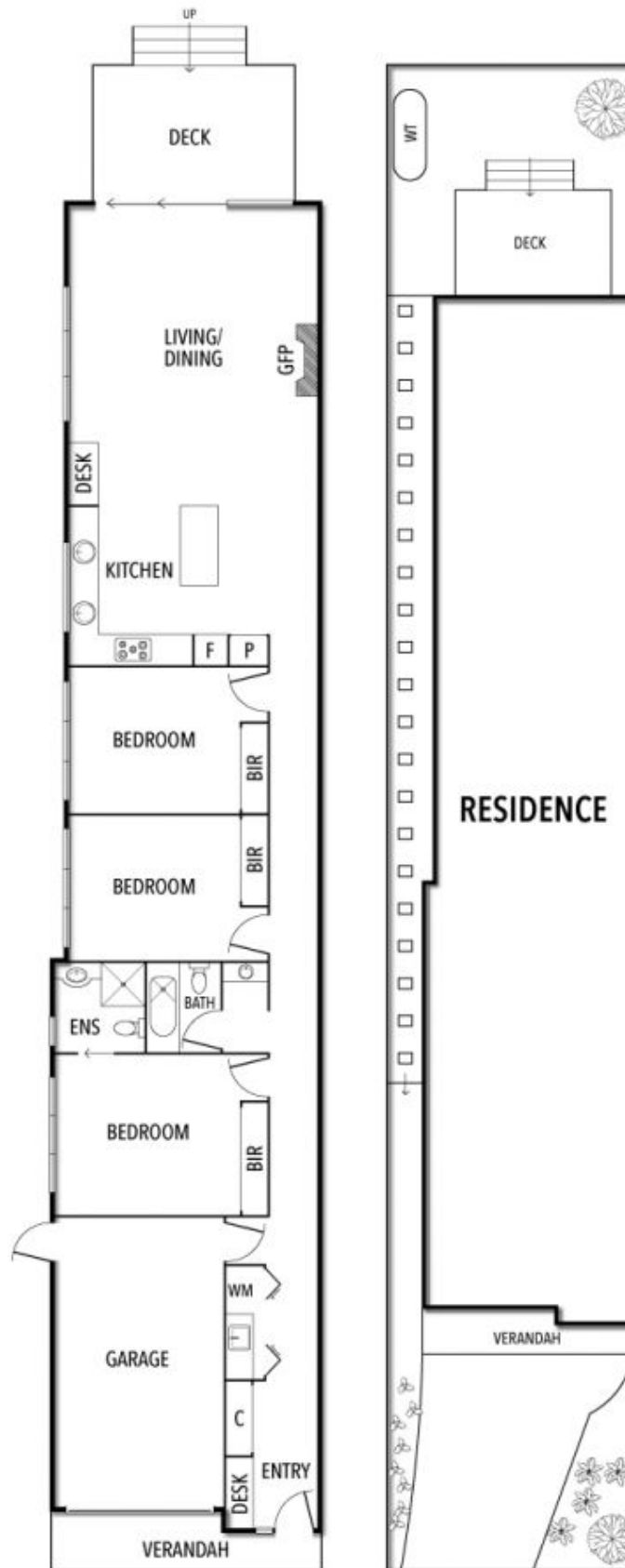
The main bedroom with divine ensuite bathroom accompanies two more bedrooms and a second deluxe bathroom with separate toilet.

A single garage with internal entry, fitted desks, European laundry, ducted heating and air conditioning and a rainwater tank complete this tempting proposition.

Joey Eckstein  
0419419199  
[jeckstein@wilsonagents.com.au](mailto:jeckstein@wilsonagents.com.au)

Travis Fein  
0411873732  
[tfein@wilsonagents.com.au](mailto:tfein@wilsonagents.com.au)

## 499B Inkerman Street, St Kilda



This plan has been prepared for marketing purposes only. Please note that all measurements & angles are approximate only, so it is strongly advised that all interested parties should undertake their own investigation into the accuracy of the supplied information.  
No representations or warranties of any nature whatsoever are given or attended.