



13/79 Atherton Road OAKLEIGH

2  1  1 

Townhouse living meets apartment life

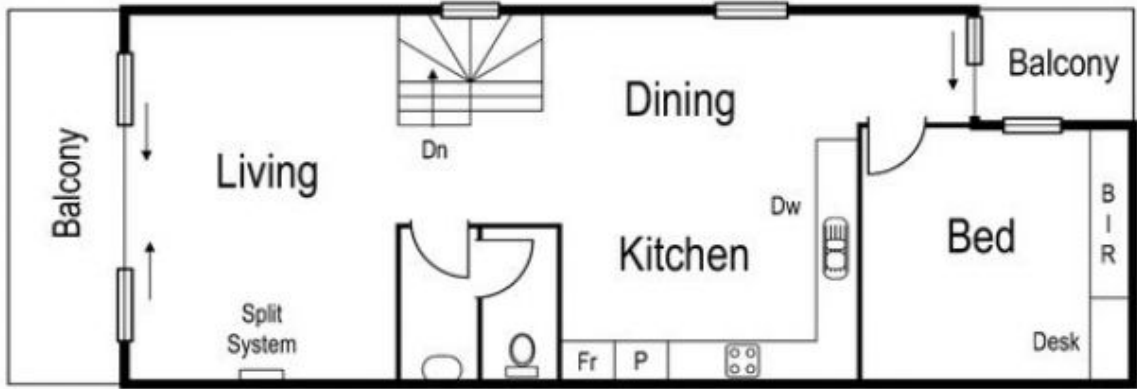
This 2 level , sun filled apartment combines today's cutting edge living environment with modern finishes throughout.

Featuring:

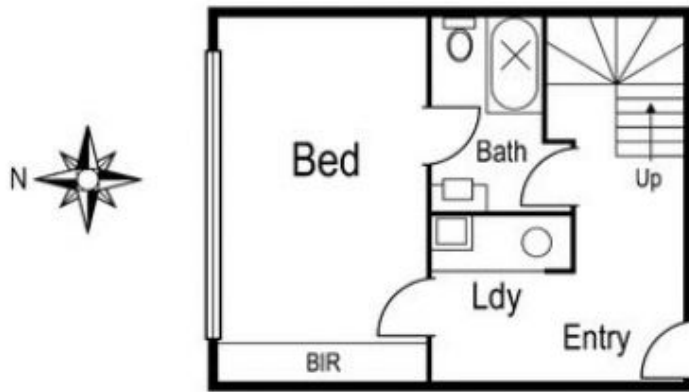
- 2 large bedrooms, both with built in robes,
- Sunlit lounge area
- Stylish kitchen with stainless steel appliances and dishwasher
- 2 balconies
- Reverse cycle heating and cooling
- Large European laundry
- Security entrance with intercom and secure undercover car space

Set in the heart of Oakleigh, this location lets you experience trendy cafes with only a five minute walk to train station, Oakleigh Primary, Sacred Heart and various local amenities.

Maddy Stubbs
0411 600 588
mstubbs@wilsonagents.com.au



Upper Floor



Lower Floor