



66 South Wharf Drive DOCKLANDS

4 2 4

Luxe Waterfront Wonder, World-Class Lifestyle

\$ 6,910,000

Spectacular 4 Level home with own yacht mooring setting a new standard for luxurious waterfront living, this stunning residence has undergone a comprehensive no-expense-spared renovation, spanning four magnificent levels - each one as impressive as the last. World-class harbour views are yours forever from its prime riverside position within the exclusive South Wharf Drive precinct, where discerning buyers are set to be wowed by the inner-city space, security, and contemporary refinement on offer.

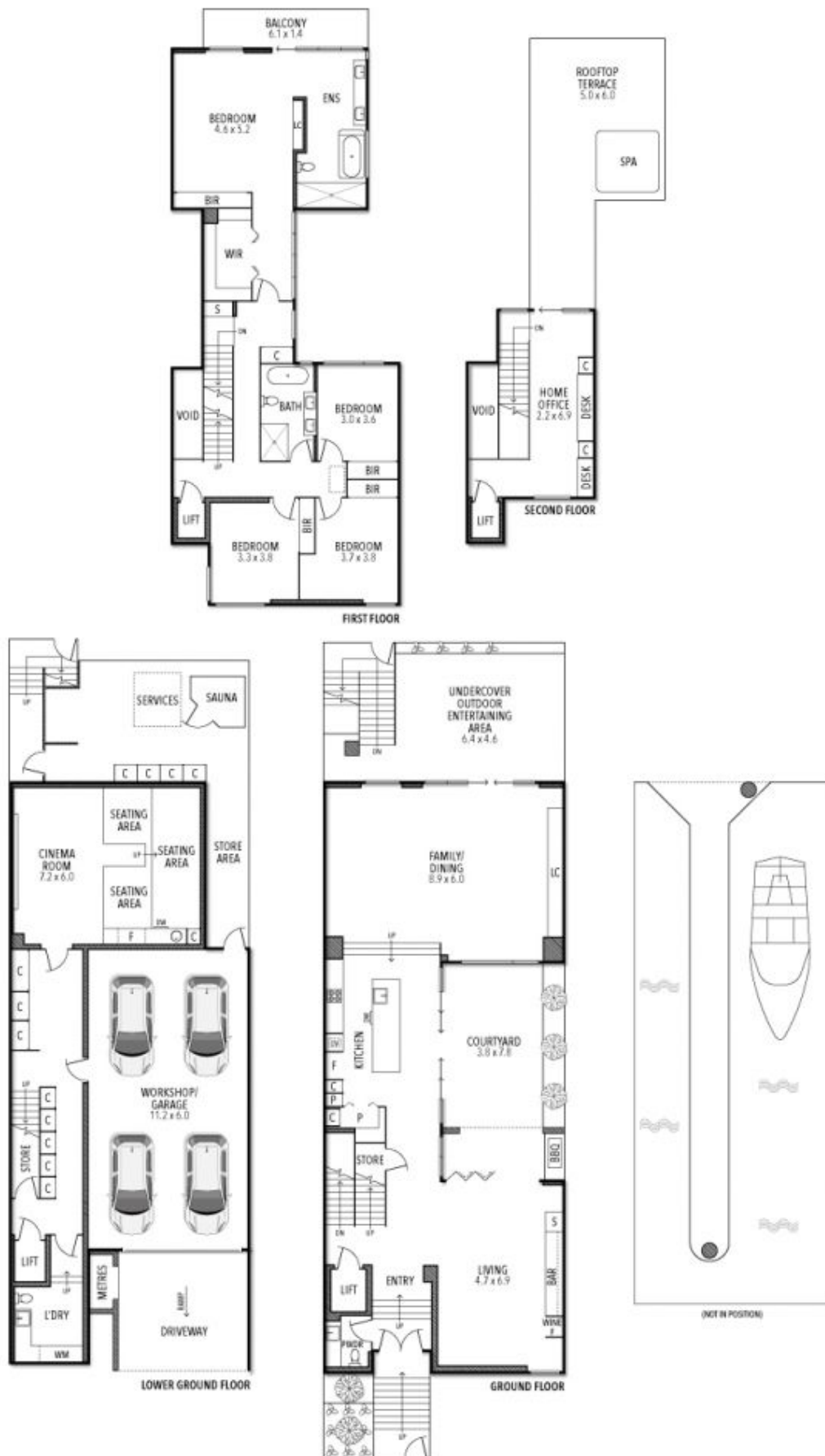
Graeme Wilson
0418315645
gwilson@wilsonagents.com.au

Serviced by a custom-built chef's kitchen with Wolf/Bora appliances, the central courtyard embraces natural light and a sunken lounge/dining spaces flow out to a north-facing alfresco area taking in glorious sunshine and soothing river outlooks, while a bespoke gentlemen's room to the front has been exquisitely finished Sub-Zero wine fridge, bar cabinetry and parquet floors to exude a sublime sense of sophistication.

Jayden Gleeson
0415061366
jgleeson@wilsonagents.com.au

All level two bedrooms have built-in robes, the secluded king-sized master retreat with a concealed walk-in robe, deluxe ensuite designed to embrace water views and a balcony

66 South Wharf Drive, Docklands



This plan has been prepared for marketing purposes only. Please note that all measurements & angles are approximate only, so it is strongly advised that all interested parties should undertake their own investigation into the accuracy of the supplied information. No representations or warranties of any nature whatsoever are given or attended.