



1/154 Brighton Road ELSTERNWICK

2 **1** **1**

1970s Apartment with Lifestyle Convenience

Please advise the agent via email or phone call if you wish to have a private viewing during the advertised open time.

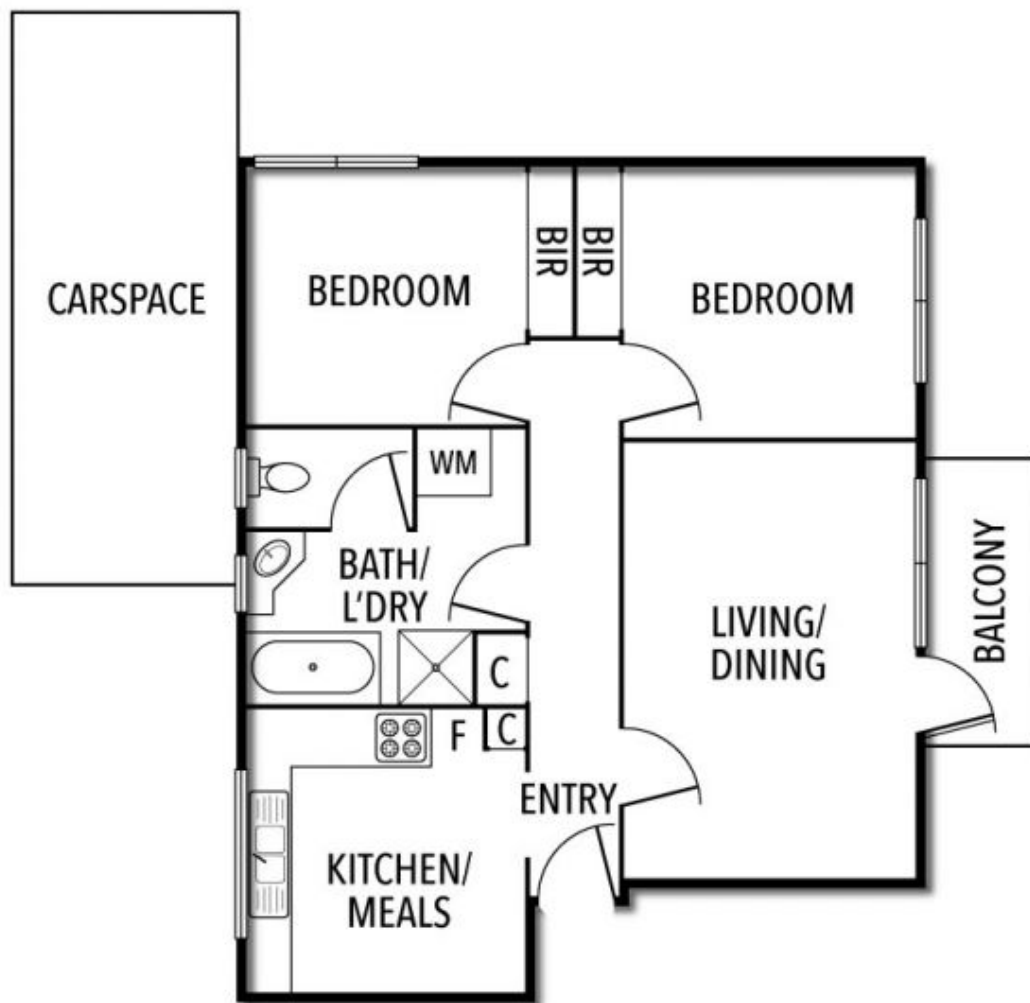
This 2 bedroom ground floor residence is centrally located to all of Ripponlea's, Elsternwick's and Elwood's myriad of lifestyle conveniences and attractions. In a boutique complex of only 12, this solid brick apartment is ready for immediate enjoyment and/or an ideal investment opportunity with secure remote car space and intercom entry.

- 2 generous double bedrooms (BIR)
- North facing spacious living with balcony
- Laminate kitchen with meals area
- Updated bathroom with laundry
- Remote controlled car park on title, hallway storage
- 1 of only 12, ground floor, solid brick
- Moments stroll to cafes, transport, parks, etc

Joey Eckstein
0419419199
jeckstein@wilsonagents.com.au

Travis Fein
0411873732
tfein@wilsonagents.com.au

1/154 Brighton Road, Ripponlea



This plan has been prepared for marketing purposes only. Please note that all measurements & angles are approximate only, so it is strongly advised that all interested parties should undertake their own investigation into the accuracy of the supplied information.
No representations or warranties of any nature whatsoever are given or attended.