

**2/58A Westbury Street ST KILDA EAST**

**2** **1**

## A Ground-Floor Deco You Can Afford

In a boutique Art Deco block of only 4 this Strata apartment enjoys a private and peaceful setting plus wonderful proximity to cosmopolitan Carlisle Street, local parklands and lifestyle precincts.

An ideal first home or investment with scope to add value via contemporary renewal, it comprises generous living/dining room, separate kitchen (stone surfaces, gas appliances & dishwasher), large master and a secluded second bedroom with study nook.

Ensuring a fabulous lifestyle close to leafy Alma Park and Hewison Reserve, Windsor's vibrant bar/cuisine scene, the Carlisle St café set and Balaclava Train Station, it includes secure intercom entry, polished timber floors and laundry provisions in the bathroom.

### Additional Information

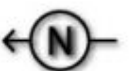
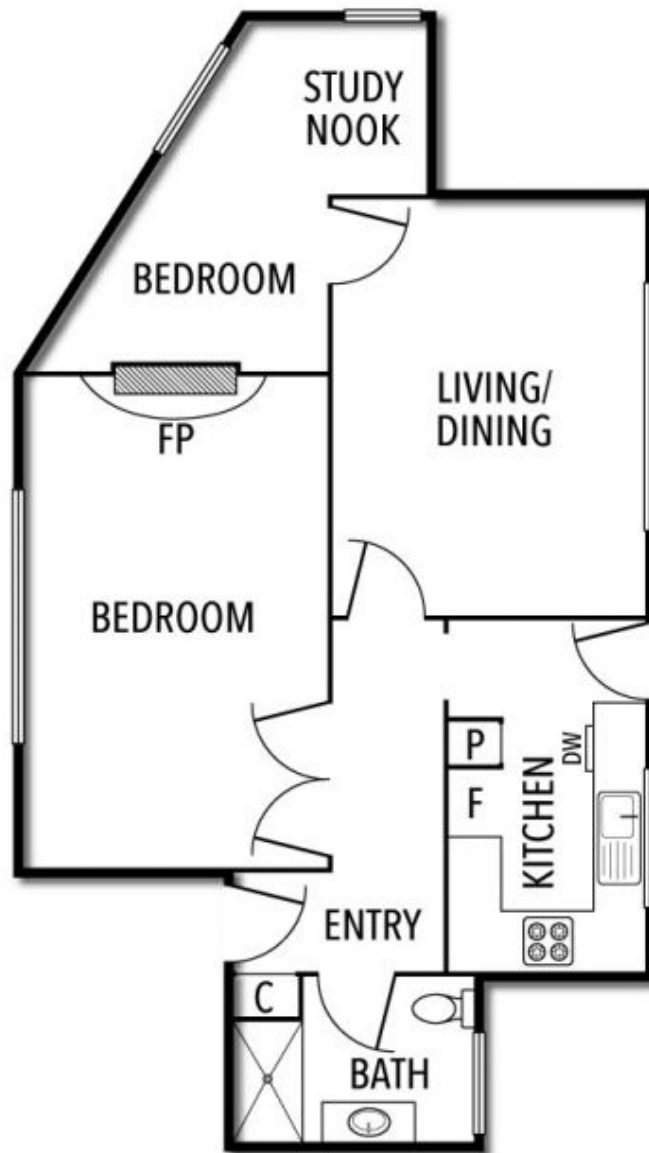
Strata Title

Council rates: \$1,038.95

Travis Fein  
0411873732  
tfein@wilsonagents.com.au

Joey Eckstein  
0419419199  
jeckstein@wilsonagents.com.au

2/58 Westbury Street, St Kilda East



This plan has been prepared for marketing purposes only. Please note that all measurements & angles are approximate only, so it is strongly advised that all interested parties should undertake their own investigation into the accuracy of the supplied information.  
No representations or warranties of any nature whatsoever are given or attended.