



11 Denman Avenue ST KILDA EAST

3 **2** **2**

Edwardian Charm, Grace And Family Space

Register for an appointment.

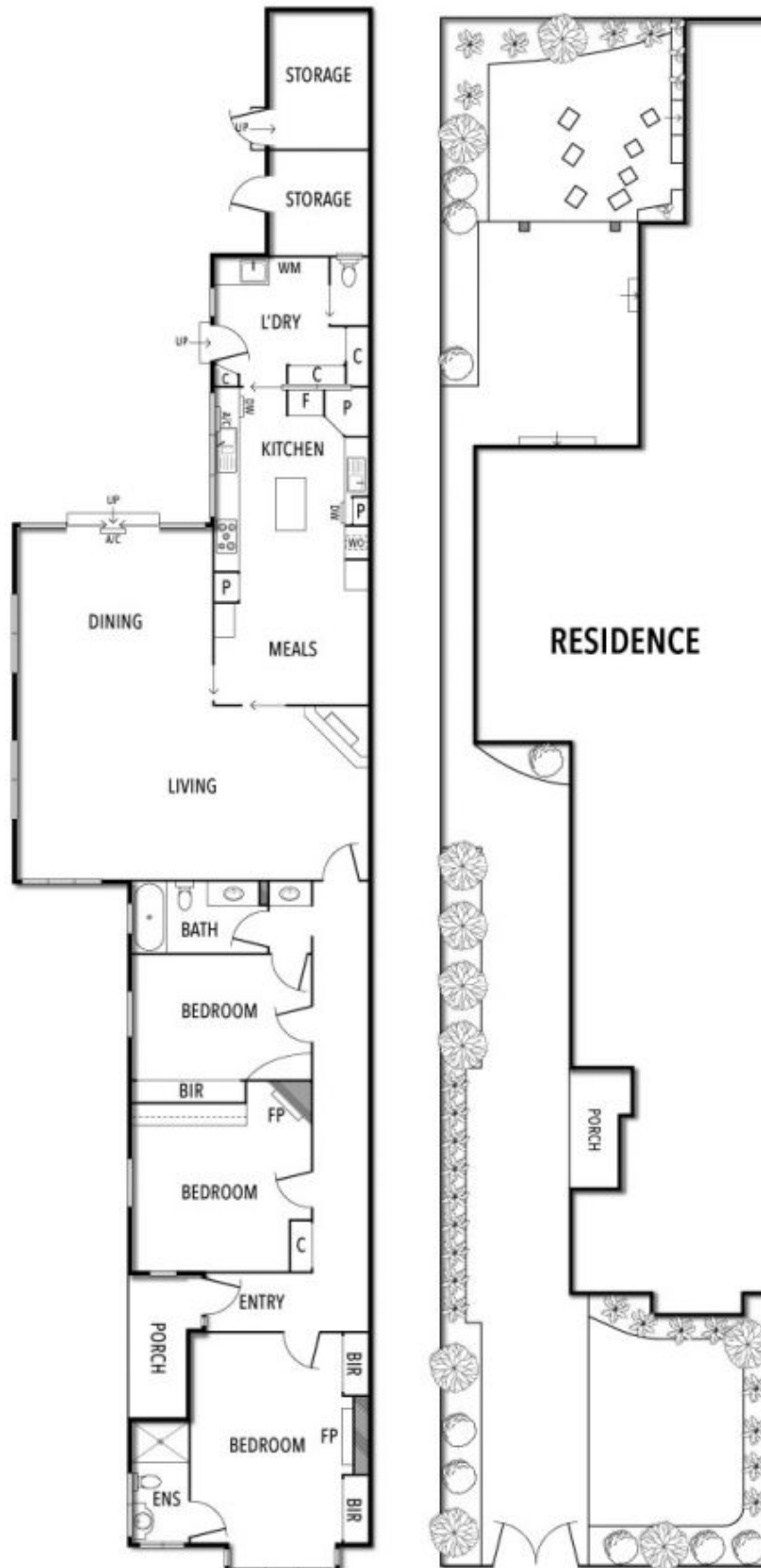
The enduring charm, superb proportions and light-filled allure of this engaging Edwardian on approx.412sqm provides instant appeal. Beyond its enchanting street presence, the impressively spacious accommodation is highlighted by an enormous lounge and dining room that's perfect for large-scale family gatherings and occasions. Comprehensively equipped to cook up a feast, the kitchen is appointed with a double oven, two dishwashers, separate sinks and a casual meals area.

A generous pergola-covered courtyard and adjoining lawn cater to effortless outdoor enjoyment. The huge main ensuite bedroom is adorned with a leadlight bay window framing views of the relaxing north-facing front garden while two more sizeable bedrooms share the facilities of a second bathroom with shower-over-the-bath, toilet, vanity, separate hand basin and dual access. A laundry, 3rd toilet, ducted heating, split-system air conditioners, shed and the spectacular vertical dimension of soaring ceilings are additional features.

Joey Eckstein
0419419199
jeckstein@wilsonagents.com.au

Travis Fein
0411873732
tfein@wilsonagents.com.au

11 Denman Avenue, St Kilda East



This plan has been prepared for marketing purposes only. Please note that all measurements & angles are approximate only, so it is strongly advised that all interested parties should undertake their own investigation into the accuracy of the supplied information.
No representations or warranties of any nature whatsoever are given or attended.