

Auction this
Sunday



1/96 Hotham Street ST KILDA EAST

2 1 1

Classic Art Deco In a Boutique Block

Hold onto your breath because this mega-spacious, character-filled apartment will steal it away. Underscored by grand and glamorous proportions and lofty decorative ceilings, it's a residence that's truly one-of-a-kind.

A gorgeous heritage block provides an enchanting setting for the magical home, which features a beautiful living room linking to a private and super-generous garden sanctuary to entertain alfresco or unwind and relax as you take in the surrounding greenery. Opposite the living room sits an inviting dining room that could be set up as an additional bedroom depending on your requirements. With scope to update, the kitchen is comfortably appointed with oven, gas cooktop and a dishwasher. The big bedrooms are fitted with built-in robes and share a central bathroom that also has potential to modernise to suit your own style.

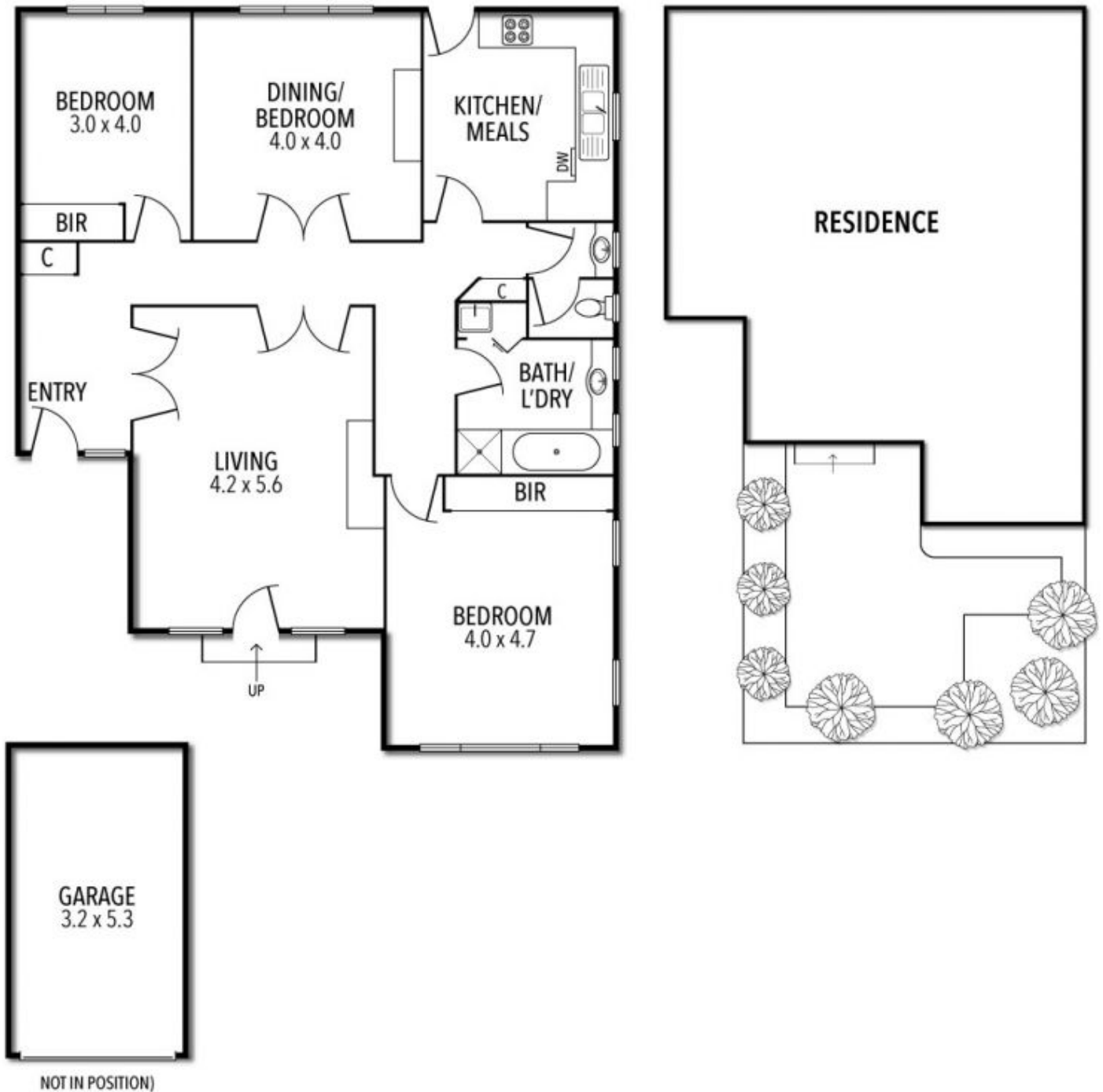
Ducted heating, a separate toilet with hand basin, European laundry, floorboards, fireplaces, secure intercom entry and a car space are additional features.

And once you step inside, it's so quiet that you would never believe that you're within such close proximity to transport, leading schools and Carlisle Street's café culture, dining-out

Norma Evans
0422844666
nevans@wilsonagents.com.au

Adam Guest
0425 288 888
aguest@wilsonagents.com.au

1/96 Hotham Street, St Kilda East



This plan has been prepared for marketing purposes only. Please note that all measurements & angles are approximate only, so it is strongly advised that all interested parties should undertake their own investigation into the accuracy of the supplied information. No representations or warranties of any nature whatsoever are given or attended.