



**618/181 Fitzroy Street ST KILDA**

**3**  **2**  **2** 

**Trading up or down, this is the perfect city pad with the best views in Melbourne!**

Breathtaking 3-bedroom single level home with expansive width taking in superlative sunset view across the junction Oval, GP track, Albert Park lake, the city skyline and the bay! This superbly equipped apartment features oak timber flooring throughout, integrated high end "Miele" appliances, Stone benchtops and splashback. You can be sure that any time of the day or night cooking, dining and entertaining with such magic views will be a dream.

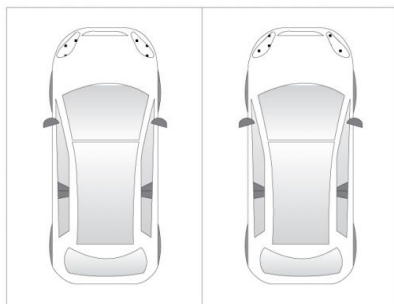
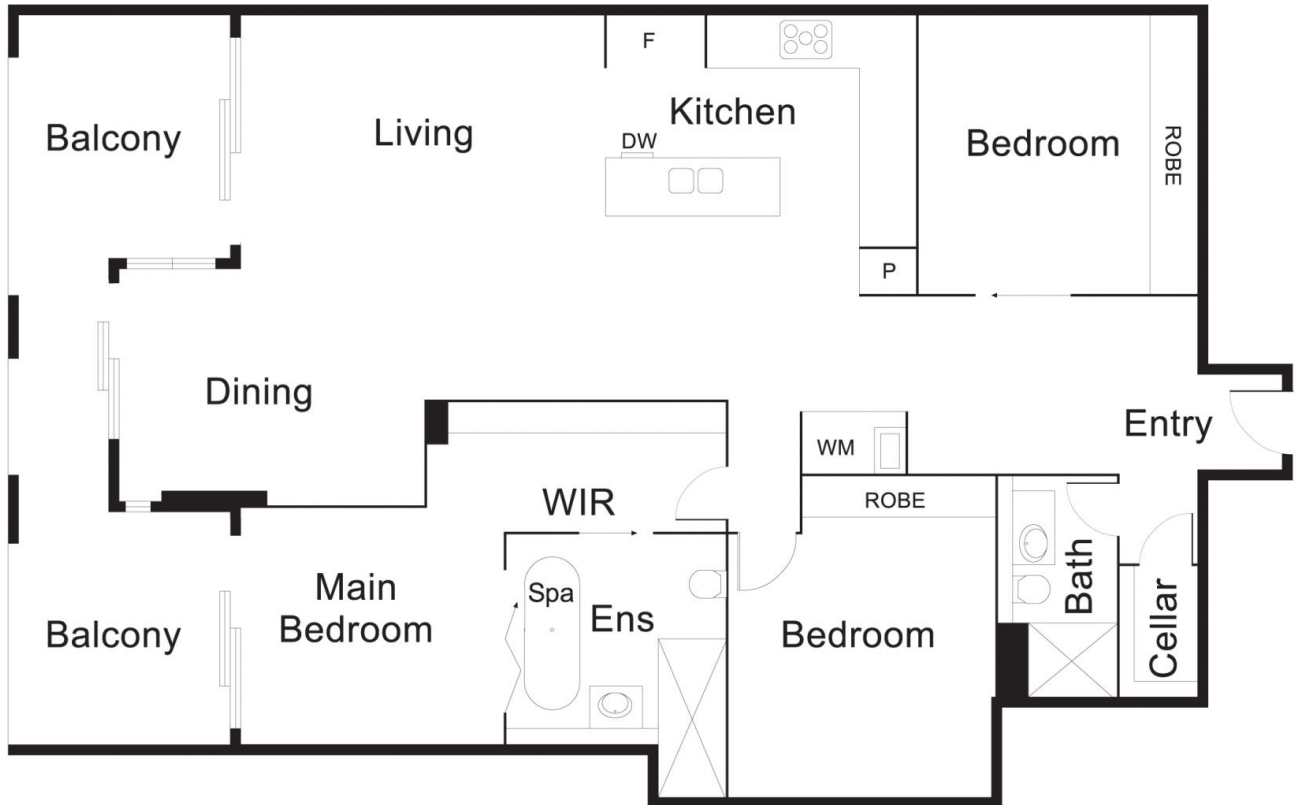
Head up to the rooftop entertaining facilities and be awestruck with its spectacular resort quality infinity lap pool, al fresco BBQ, full kitchen and 360 degrees of uninterrupted views! Spoil yourself by arriving at your designer apartment and St Kilda address via grand lobby entrance and concierge, or via your own remote accessed carpark. Styled to perfection by architects SJB and completed late in 2016, this apartment is the perfect answer to minimalist designer living.

Graeme Wilson  
0418315645  
gwilson@wilsonagents.com.au

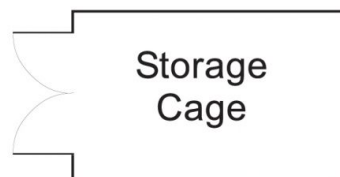
Damon Kadlecik  
0402251450  
dkadlecik@wilsonagents.com.au



618/181 Fitzroy Street, St Kilda



(not in position)



(not in position)