



## 1/157 Victoria Avenue ALBERT PARK

### Spacious first floor fully fitted office space - Under Offer

- 105 sqm approx.
- Separate rear entry (Bleakhouse Lane).
- 1 on-site carpark.
- Complete office fit-out.
- Kitchen & bathroom facilities.
- \$26,000 p.a. + GST + outgoing.
- Available Now.

Lan Nguyen  
0421 410 466  
nguyen@wilsonagents.com.au

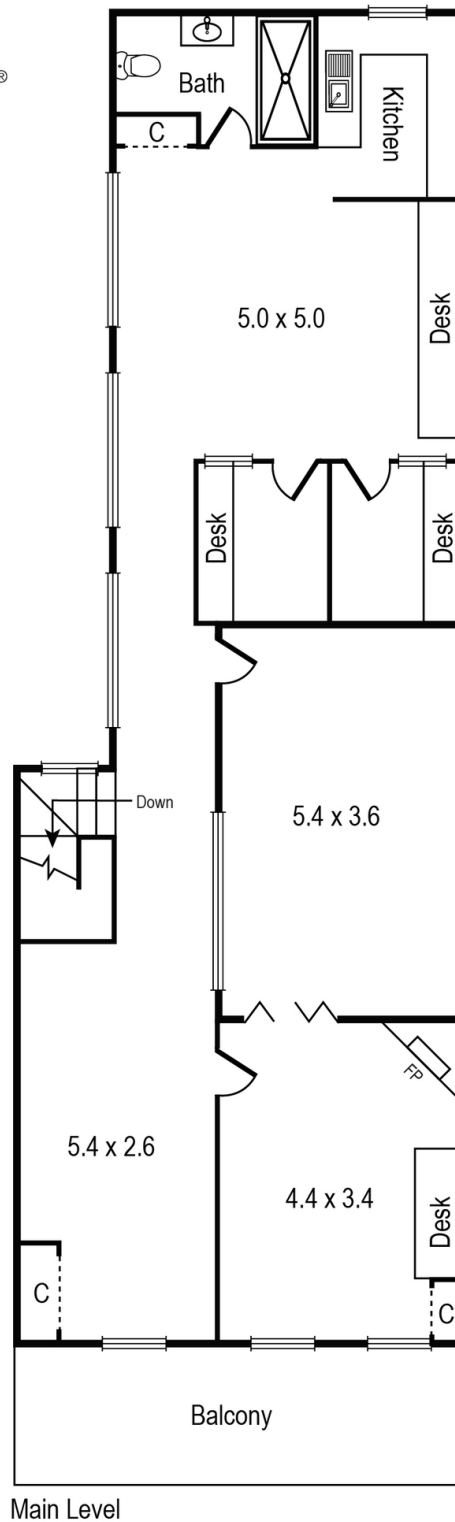
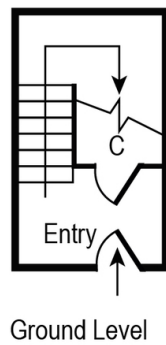
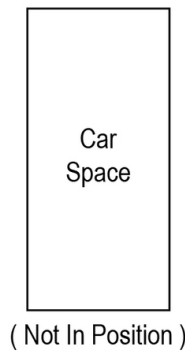
Alan Watson  
0434 398 818  
awatson@wilsonagents.com.au

INSPECTION BY APPOINTMENT PH 03 9528 8888.

# Unit 1, 157 Victoria Ave, Albert Park



Total Area = 105sqm (approx)



Whilst every attempt has been made to ensure the accuracy of this floorplan, measurements of doors, windows, rooms and any other items are approximates only. The producer or agent cannot be held responsible for any errors, omissions or misstatements. This plan is for illustrative purposes only and should be used as such.