



8/220 Alma Road ST KILDA EAST VIC

2 1 1

It's Big, It's Bold, It's A House-Sized Beauty

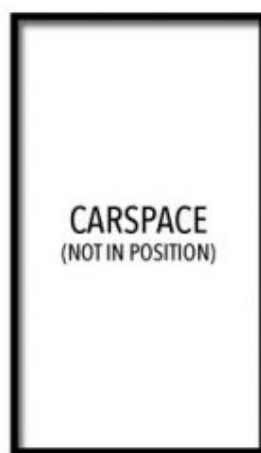
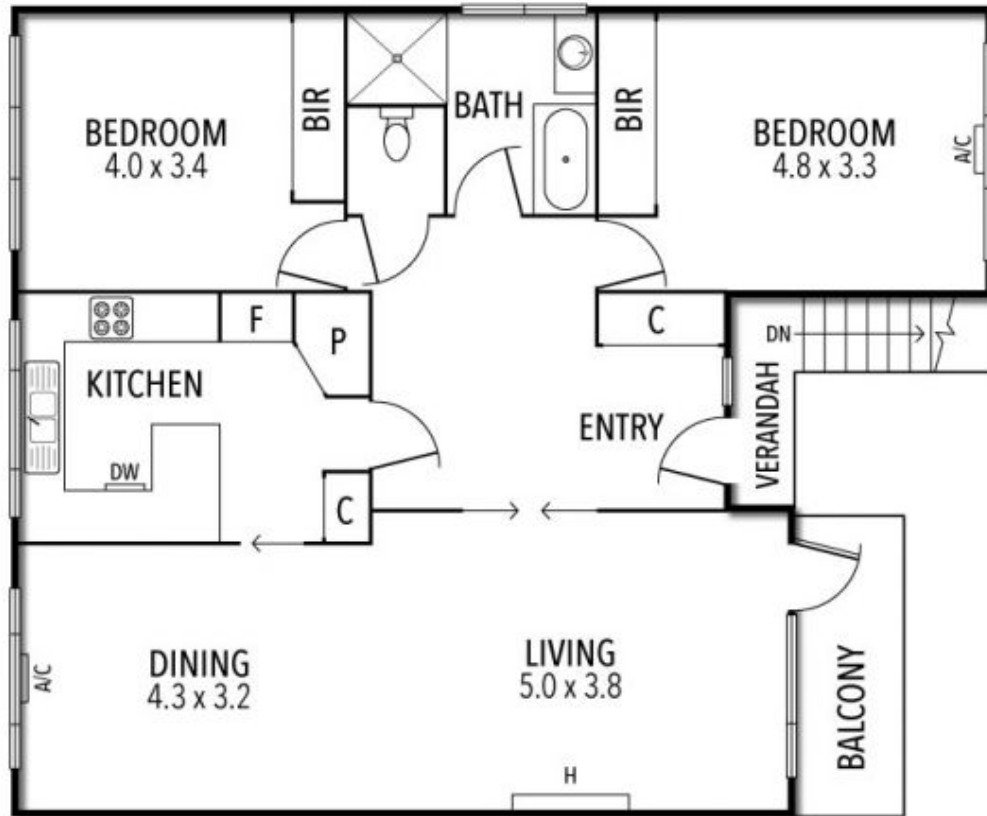
\$ 635,500

Displaying the kind of dimensions not usually found in today's newer offerings, this elevated apartment is probably one of the biggest you'll see. Set back from the street, it's absolutely massive with a dedicated entry foyer introducing the living and dining room with space aplenty stepping out to a balcony bathed in afternoon sunshine and a fully appointed timber kitchen with breakfast bar. The two enormous bedrooms are lined with a wall of built-in robes and share a central bathroom with bath, walk-in shower and separate toilet. An undercover car space, heating, air conditioning, floorboards, decorative cornices and the use of a communal laundry are further highlights of the solid-brick beauty. Owner-occupiers will love the central location just metres from Alma Village's eateries, shops and Woolworths. Multiple tram routes, bus stops, Armadale Station, Malvern Central, café-centric Carlisle Street, Glenferrie Road, Armadale Reserve, Greenmeadows Gardens and Alma Park are also within easy reach.

Joey Eckstein
0419419199
jeckstein@wilsonagents.com.au

Travis Fein
0411873732
tfein@wilsonagents.com.au

8/220 Alma Road, St Kilda East



This plan has been prepared for marketing purposes only. Please note that all measurements & angles are approximate only, so it is strongly advised that all interested parties should undertake their own investigation into the accuracy of the supplied information.
No representations or warranties of any nature whatsoever are given or attended.