



**28/10 Clifton Street PRAHRAN**

2 1 1

### Modern Living And A Lifestyle To Love

Elevated in the sleek Mondriana development, this modern apartment offers plenty of space, an abundance of natural light and a dynamic position with cafés, restaurants, shops and trams at your doorstep. A quiet retreat from its vibrant urban surroundings, the home's practically planned layout showcases a generously sized living and dining room with sliding glass doors to a full-width entertaining terrace that's perfect for soaking up the surrounds. The open-plan kitchen features stone benchtops, gas cooktop and a dishwasher. A secure residence with video-monitored intercom entry, it also offers a main bedroom with a walk-in robe, a second bedroom, a central bathroom with shower-over-the-bath, a concealed European laundry, panel heaters, lift access and a car space. Walk to your pick of dining-out venues, bars, shops and supermarkets, Prahran Station and the delicious fresh produce at Prahran Market. An excellent opportunity for first home buyers and investors to ride on the laurels of this pivotal Prahran position.

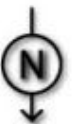
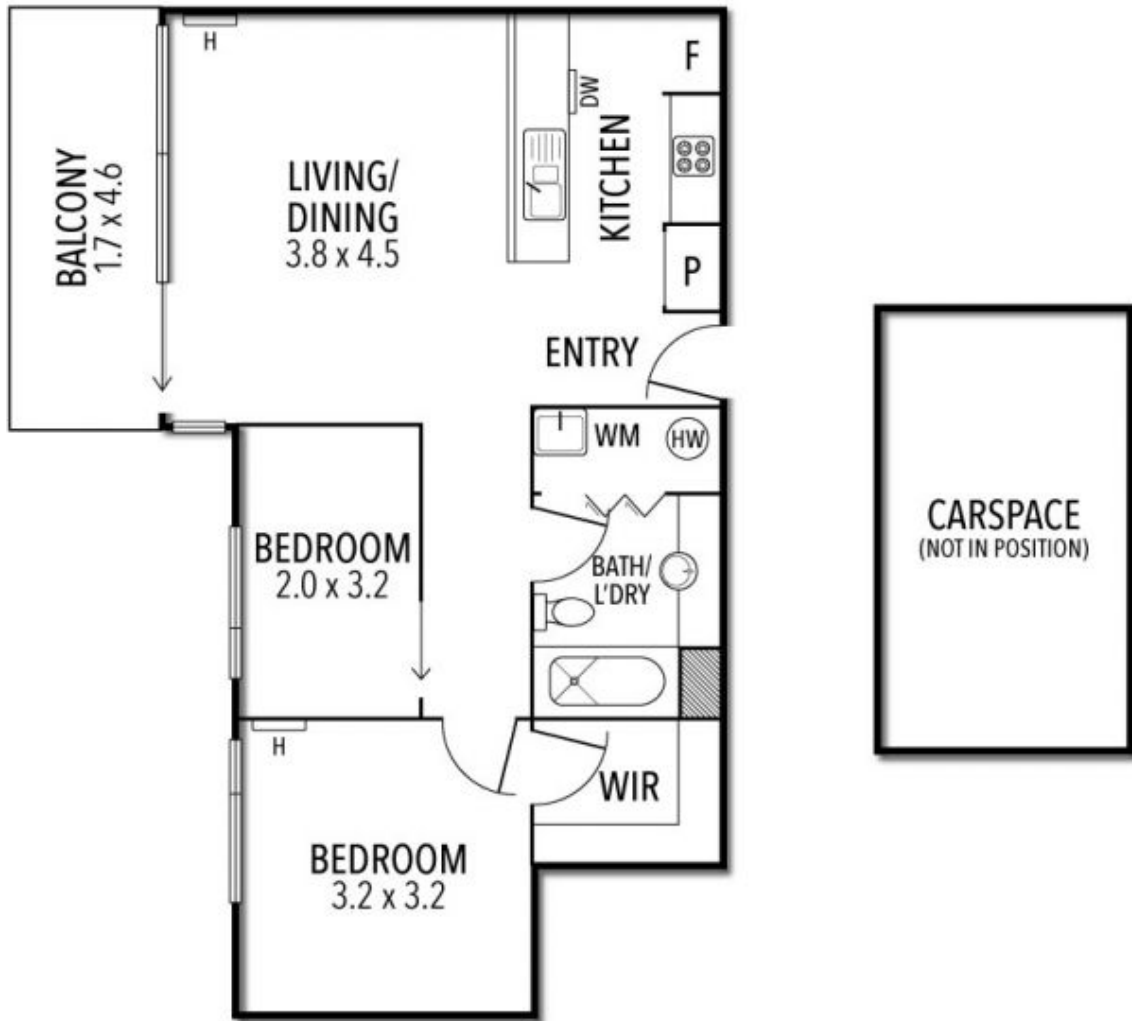
**\$ 575,000**

Norma Evans  
0422844666  
nevans@wilsonagents.com.au

Travis Fein  
0411873732  
tfein@wilsonagents.com.au



28/10 Clifton Street, Prahran



This plan has been prepared for marketing purposes only. Please note that all measurements & angles are approximate only, so it is strongly advised that all interested parties should undertake their own investigation into the accuracy of the supplied information. No representations or warranties of any nature whatsoever are given or attended.