



## 2B Garden Street ELSTERNWICK

3 2 2

### Townhouse Temptation, Prestigious Location

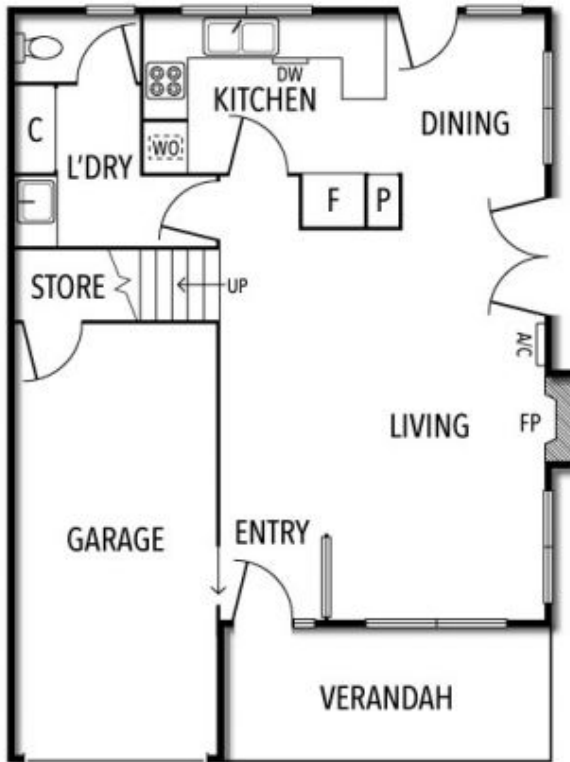
\$ 1,275,000

Serenely positioned within easy reach of both Elsternwick and Ripponlea Villages is where you'll discover this sophisticated town residence where gleaming polished floorboards, French windows and doors, and a neutral colour scheme impart an alluring ambience of class and elegance from the very outset. Effortlessly flowing into one another to entertain in style, the light-filled living and dining rooms merge seamlessly with a north-facing wraparound landscaped deck to create a fantastic indoor-outdoor hub that's low-maintenance in nature, tranquil in character, and can easily accommodate plenty of friends and family. Making cooking a breeze, the open-plan kitchen features a gas cooktop, wall oven, dishwasher and stone benchtops. The spacious upper level's floorplan provides a main bedroom with ensuite bathroom and built-in robes, two more bedrooms with built-in robes, and a pristine bathroom appointed with bathtub, step-in shower and separate toilet. Additional highlights include a laundry, powder room, single garage, gas fireplace and under-stair storage. Along with coming home to total comfort and privacy, you'll also get to enjoy the added luxury of having buses, local cafés, Harleston Park and an assortment of highly regarded schools nearby. A wonderful choice for downsizers, young families, busy

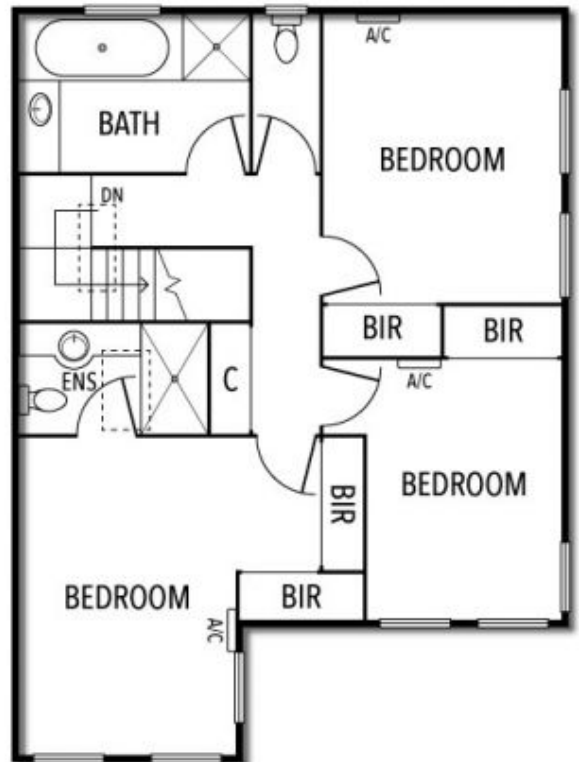
Joey Eckstein  
0419419199  
jeckstein@wilsonagents.com.au

Peter Fein  
0418 528 888  
peter@wilsonagents.com.au

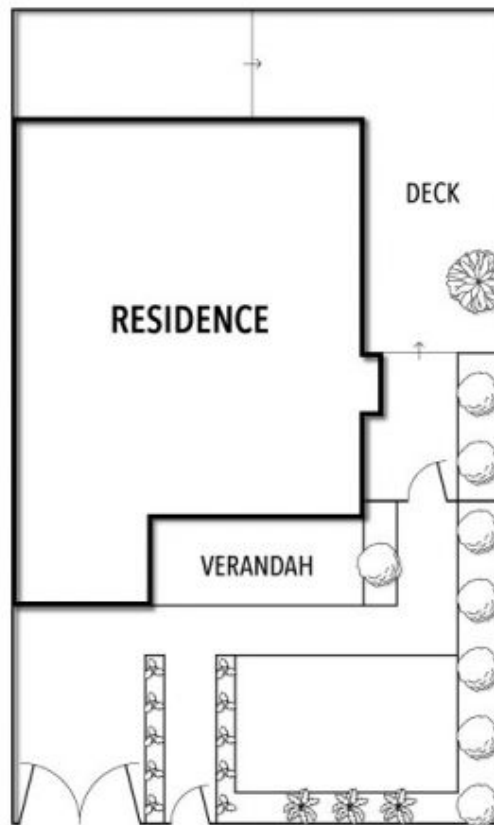
## 2B Garden Street, Elsternwick



**GROUND FLOOR**



**FIRST FLOOR**



This plan has been prepared for marketing purposes only. Please note that all measurements & angles are approximate only, so it is strongly advised that all interested parties should undertake their own investigation into the accuracy of the supplied information. No representations or warranties of any nature whatsoever are given or attended.