



## 33 St Vincent Street ALBERT PARK

2 1 1

### Period Charm in Prize Location

You will love waking up each morning to this priced home in one of Melbourne's prized streets.

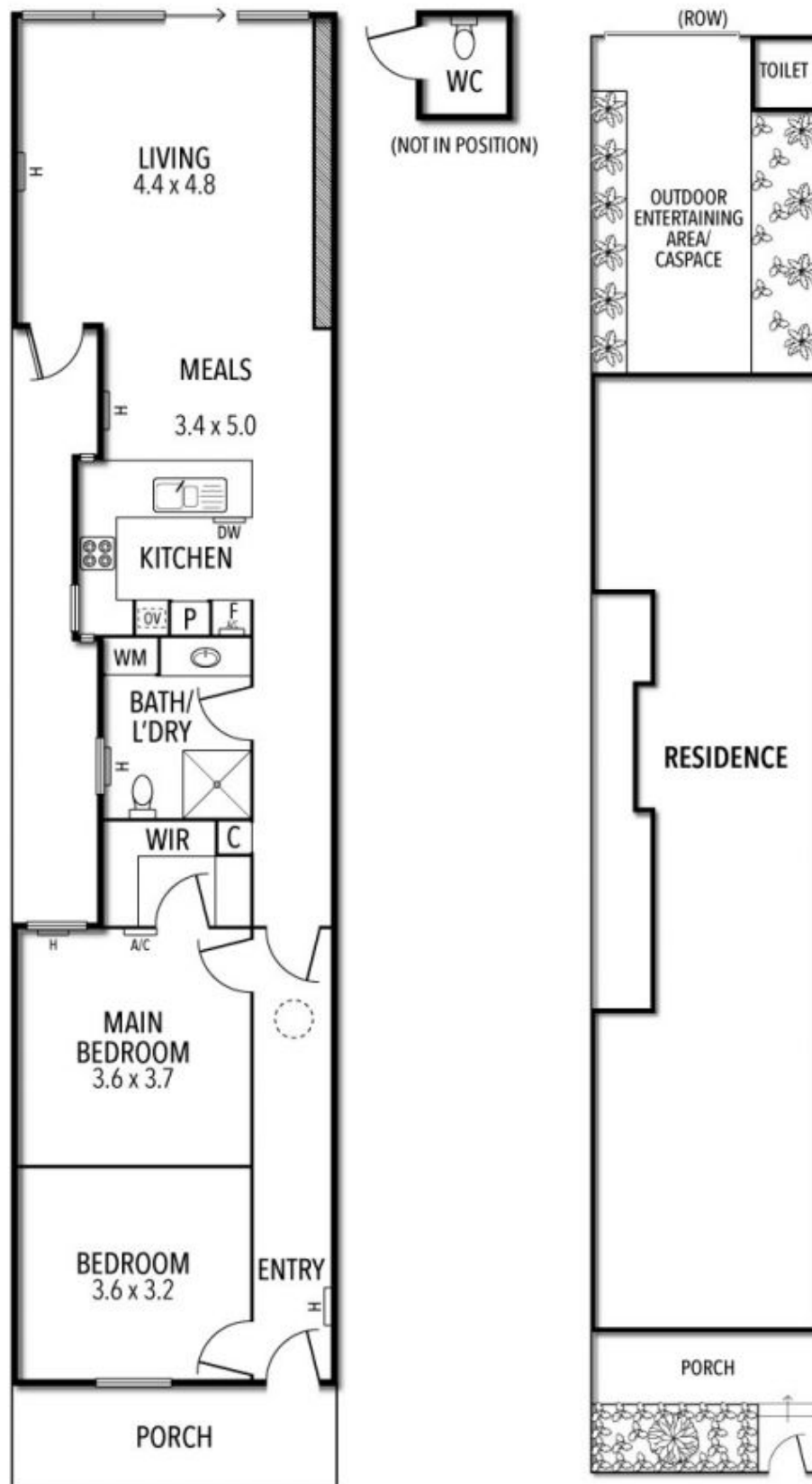
Set in a prized location near Albert Parks dress circle of St Vincent's Gardens and walking distance to the Albert Park Village displaying sought after light with northern orientation and comprises: pretty garden entry from the picket fence, enter the arched hallway & discover 2 spacious queen size bedrooms with 3 metre ceilings, master with WIR both serviced by the central bathroom.

Well-appointed, open plan kitchen fitted w /quality SS appliances, gas cooking and plenty of storage. Sundrenched by high pitched skylights, the family area opens up to rear leafy & private courtyard with off street parking & accessed by convenient rear right-of-way via Little st Vincent street.

There is touches of period detailing everywhere, dark timber floors to set the mood and gas hydronic central heating to keep you keep you cosy.

Graeme Wilson  
0418315645  
[gwilson@wilsonagents.com.au](mailto:gwilson@wilsonagents.com.au)

## 33 St Vincent Street, Albert Park



This plan has been prepared for marketing purposes only. Please note that all measurements & angles are approximate only, so it is strongly advised that all interested parties should undertake their own investigation into the accuracy of the supplied information. No representations or warranties of any nature whatsoever are given or attended.