



6/17 Railway Parade MURRUMBEENA

2 1 1

Luxurious, Secure, Garden Apartment!

\$ 550,000

A luxurious finish with a neutral palette, quality fittings and fixtures throughout all to complement the space and position! Offering a stone and stainless-steel Bosch kitchen with integrated refrigerator/ freezer and dishwasher, adjacent to the good sized living/dining room which opens to a private, landscaped courtyard.

Jayden Gleeson
0415061366
jgleeson@wilsonagents.com.au

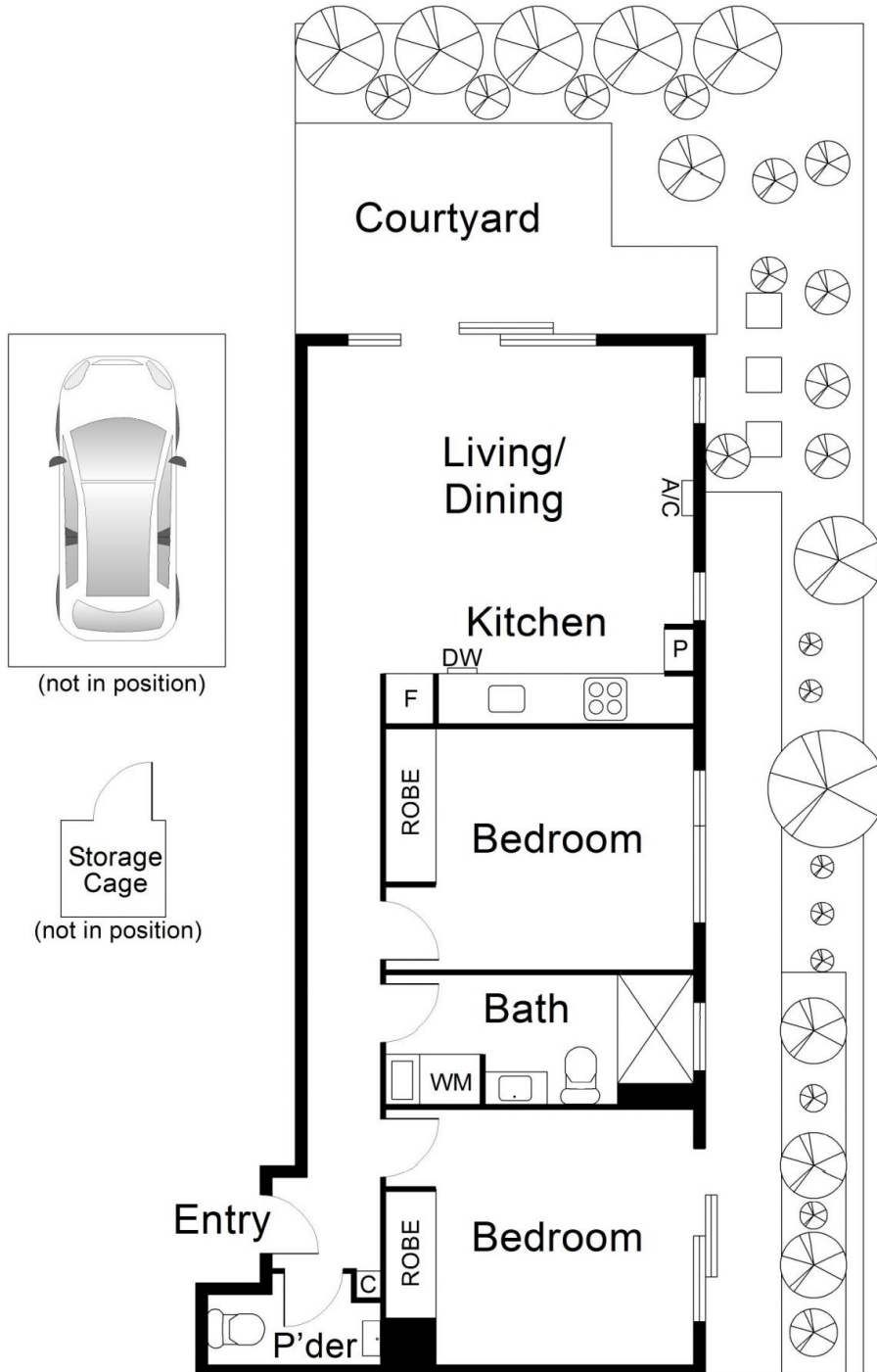
Two Queen-sized bedrooms with mirrored BIRs and leafy garden aspects from the windows! A fully tiled central bathroom, a Euro laundry and a separate powder room complete this high end residence. Features include reverse cycle air conditioning and audio-visual intercom.

Graeme Wilson
0418315645
gwilson@wilsonagents.com.au

Ideally positioned next to Murrumbeena Villages café culture, parkland, bus services, the new train station and a short drive to Chadstone Shopping Centre and Monash Uni. This small boutique block has secure basement parking and storage cage.

A beautiful apartment not to be missed.

6/17 Railway Parade, Murrumbreena



This plan has been prepared for marketing purposes only. Please note that all measurements & angles are approximate only, so it is strongly advised that all interested parties should undertake their own investigation into the accuracy of the supplied information. No representations or warranties of any nature whatsoever are given or attended.