



11/52 Hotham Street ST KILDA EAST

2  **1**  **1** 

St Kilda East affordability

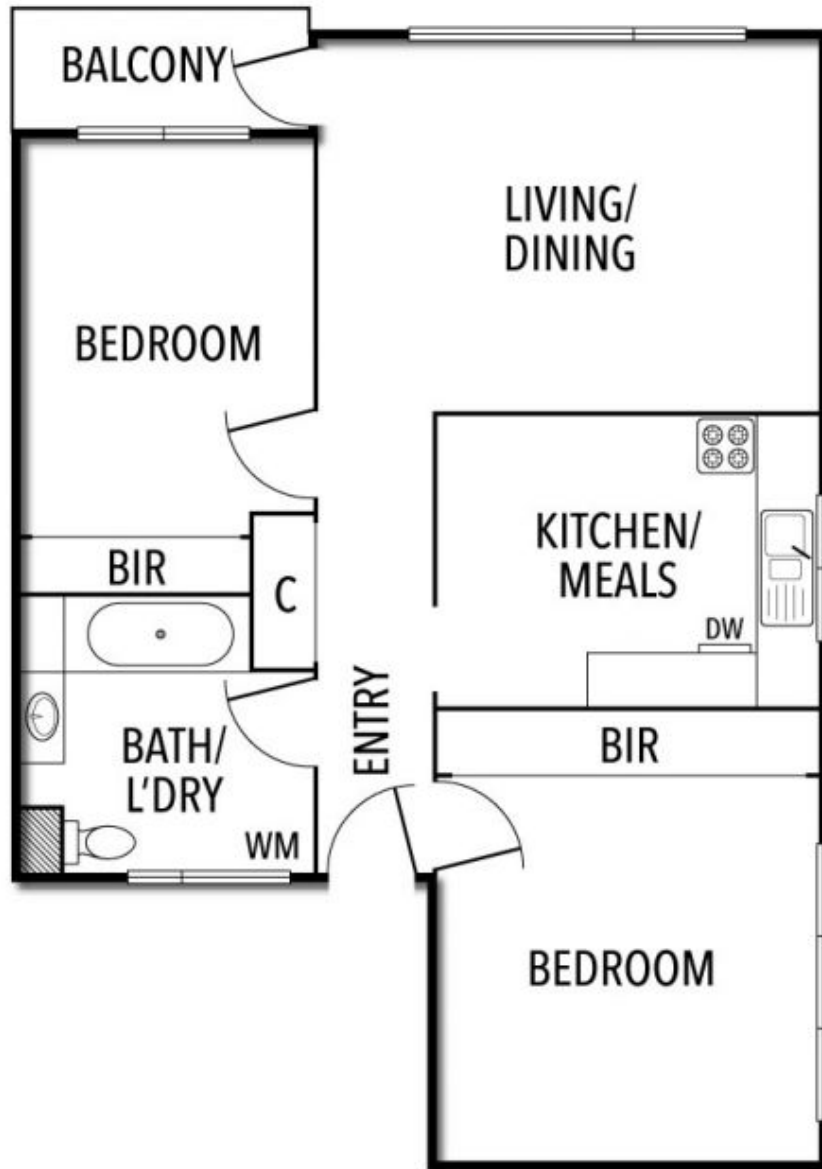
\$ 505,000

A pleasure to inspect this immaculately presented top floor north facing 2 bedroom apartment. Features security entrance, entrance hall, parquetry floors, separate kitchen with meals area, lounge opens to balcony, spacious main bedroom with built in robes, 2nd bedroom and bathroom with laundry fittings. Added bonuses include car space. Once seen it will be irresistible to the discerning buyer.

Joey Eckstein
0419419199
jeckstein@wilsonagents.com.au

Peter Fein
0418 528 888
peter@wilsonagents.com.au

11/52 Hotham Street, St Kilda East



This plan has been prepared for marketing purposes only. Please note that all measurements & angles are approximate only, so it is strongly advised that all interested parties should undertake their own investigation into the accuracy of the supplied information. No representations or warranties of any nature whatsoever are given or attended.