



2/81 Grey Street ST KILDA

2 **1** **1**

Sundrenched Sixties in the Heart of St Kilda! - Entry through Neptune Street

Where would you be if you were living just a heartbeat away from St Kilda's pulsating vibe? The answer is right here at this two-bedroom apartment, elevated on the first floor of the fab' sixties complex "Creswell?".

With everything you need to live a lifestyle like no other, it makes for a great first home or investment, featuring a sundrenched living/dining room opening onto the balcony overlooking one of St Kilda's iconic heritage listed churches next door. A renovated, spacious separate kitchen with SS appliances, two spacious bedrooms with built in robes, bathroom with shower over bath and washing machine taps, car parking on title, secure intercom entry and additional storage cupboard in the entry. This one has it all!

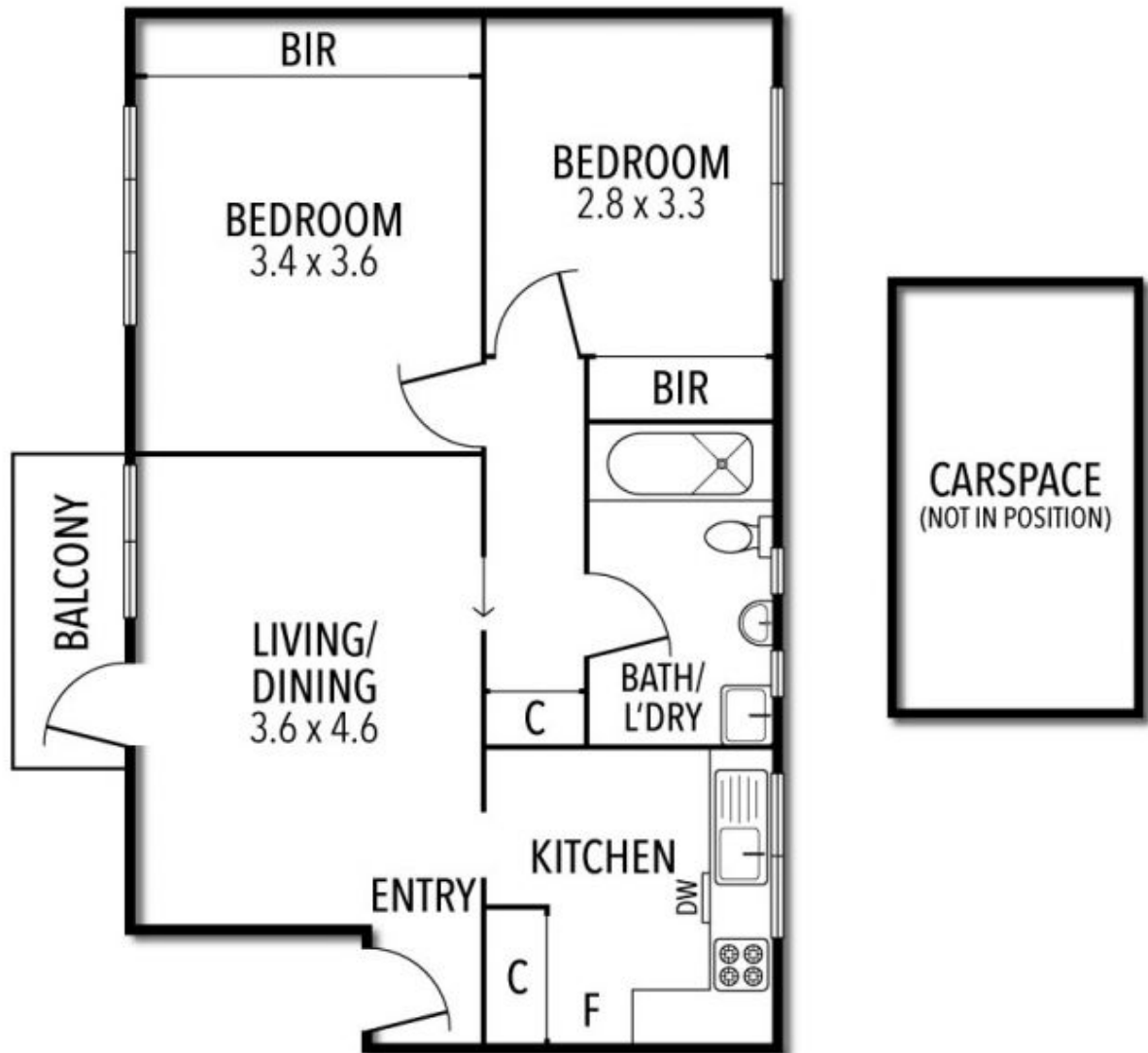
Accessed on the side via Neptune Street, it's footsteps away from the lively shops, cafés, bars, restaurants and entertainment venues in Fitzroy and Acland Streets, regular Arts and Crafts Markets, fantastic tram links to the city, Luna Park, St Kilda Sea baths, St Kilda

\$ 550,000

Peter Fein
0418528888
peter@wilsonagents.com.au

Grace Le-Francke
0419379998
glefrancke@wilsonagents.com.au

2/81 Grey Street, St Kilda



This plan has been prepared for marketing purposes only. Please note that all measurements & angles are approximate only, so it is strongly advised that all interested parties should undertake their own investigation into the accuracy of the supplied information.
No representations or warranties of any nature whatsoever are given or attended.