



327 Beaconsfield Parade ST KILDA WEST

5 2 2

FIT FOR A KING!

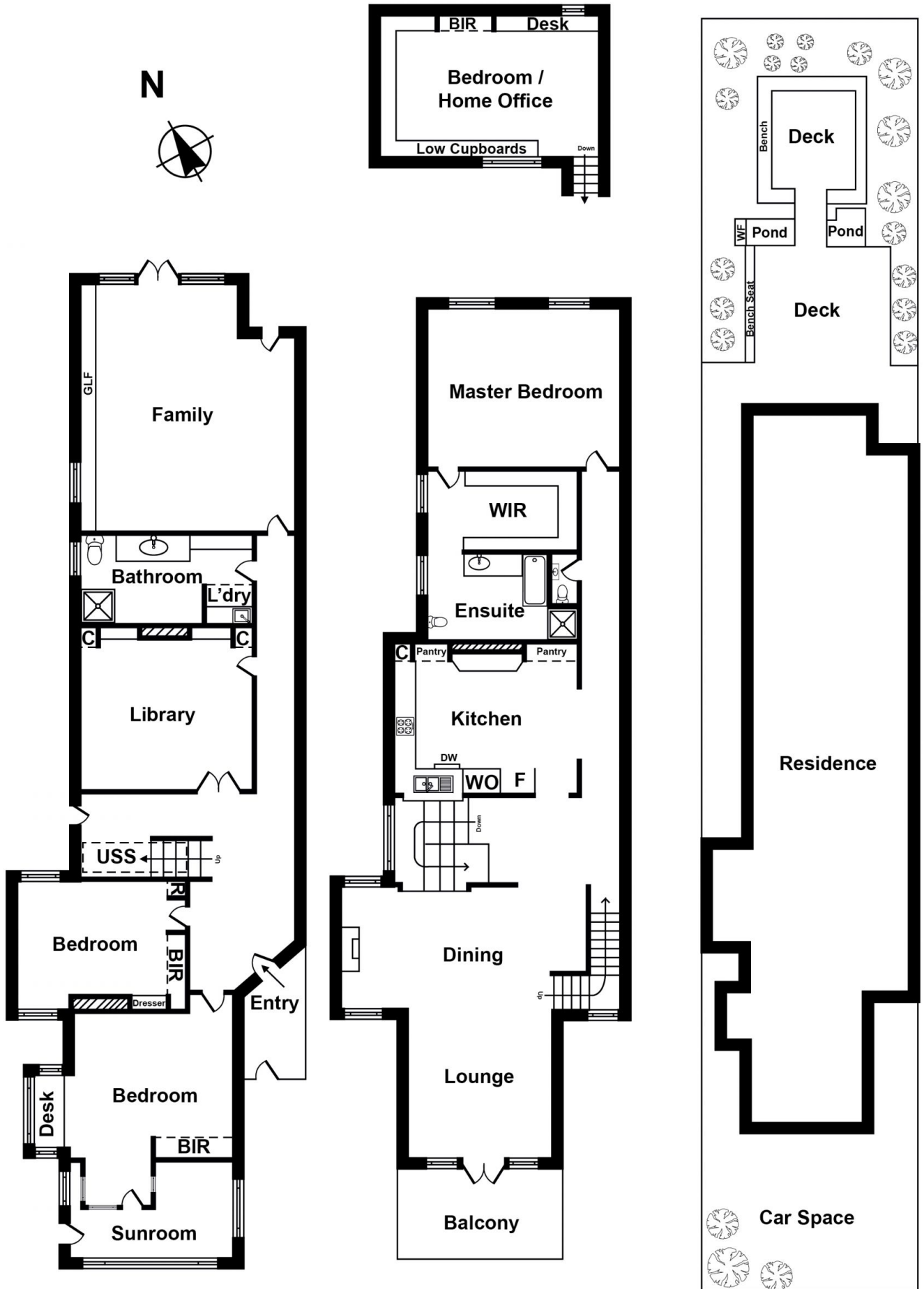
Location, Location, Location! Melbourne's most energetic seaside suburb St Kilda West. This elegant home is perfectly positioned on St Kilda West's most sought after boulevard. Situated on over 450sqm of land, this timeless 1920's residence is built over 3 substantial levels & has been cleverly renovated and restored to architectural perfection after nearly 100 years. Beautiful subtle period detailing throughout, 2 lower & upper living areas with either full sea views or enter the north-facing garden, this home also comprises of sizeable entry, polished jarrah flooring, the option of 5 king bedrooms with gorgeous master offering Japanese inspired ensuite & separate powder rooms on both ground & upper levels.

The reversed floor plan places a super-sized chef's kitchen with plenty of cabinetry & fixed with high end Miele appliances. Beautifully designed and detailed for living and dining as the rest of the house.

Easy walk to St Kilda's best cafés and restaurants or walk the striking ocean boulevard at sunset to offer the complete family lifestyle.

So much thought & suited to any lifestyle you choose, why wouldn't you fall for this!

Graeme Wilson
0418315645
gwilson@wilsonagents.com.au



Whilst every attempt has been made to ensure the accuracy of this floorplan, measurements of doors, windows, rooms and any other items are approximates only. The producer or agent cannot be held responsible for any errors, omissions or misstatements. This plan is for illustrative purposes only and should be used as such.