



2/62 Lansdowne Road ST KILDA EAST

1 🛏 1 🍽 1 🚗

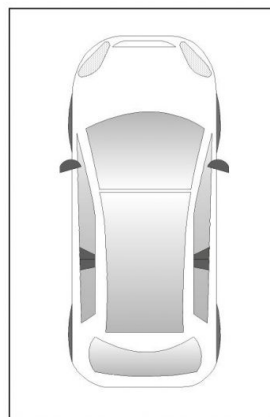
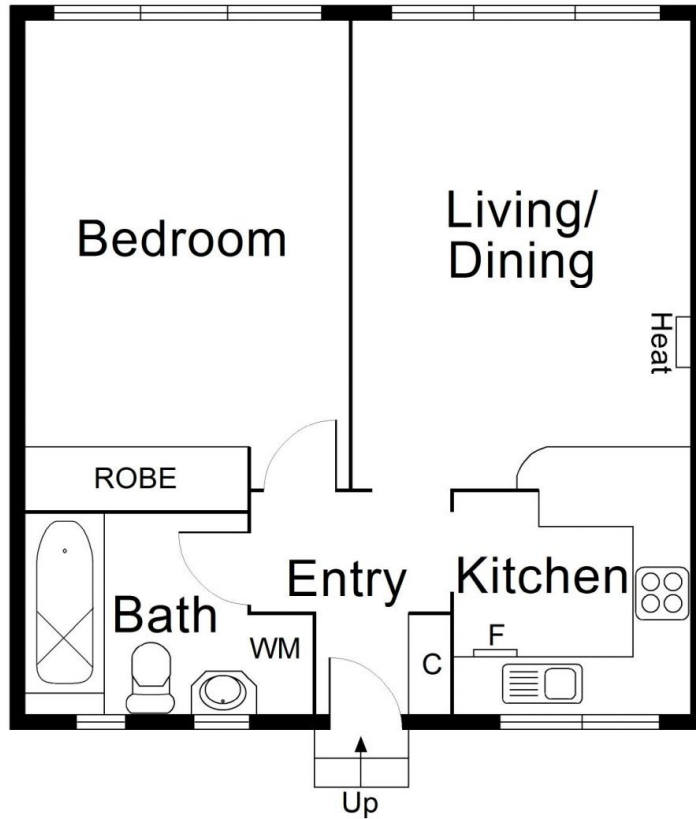
Green, Leafy, Ground floor 1960's Home!

\$ 383,000

Set in a boutique block of only six, this solid brick 1960's, one-bedroom apartment offers bright spacious living tucked away in a quiet, private in a leafy setting! Walk down the tropical garden path to your front door and enter to quality hardwood floors and abundant natural light. The entrance hall is equipped with storage and the kitchen has been renovated with stone bench tops and S/S appliances- also a servery to the dining area. The bedroom is spacious with BIRs and large windows typical of properties built in this era. Also features: secure gated parking on title, security intercom entrance and immaculate condition. Walk to all the best local cafes, restaurants, public transport and strip shopping on Orrong Rd.

Grace Le-Francke
0419379998
glefrancke@wilsonagents.com.au

2/62 Lansdowne Road, St Kilda East



(not in position)

Internal : 47 m² approx.

This plan has been prepared for marketing purposes only. Please note that all measurements & angles are approximate only, so it is strongly advised that all interested parties should undertake their own investigation into the accuracy of the supplied information. No representations or warranties of any nature whatsoever are given or attended.