



54 Park Street ST KILDA WEST

5 2 2

A Queen Anne Federation Home of Grand Proportions!

This rare and remarkable residence is spectacular in scale and grandeur, showcasing original charm and luxury finishes like no other in a coveted bay side location renowned for its illustrious period homes.

Absolutely breathtaking from the first moment, the undercover tessellated porch leads to a grand entrance foyer showcasing soaring 16 foot ornate ceilings, extravagant leadlight windows and hard wood floors. The expansive formal lounge sits proud at the front with a beautiful bay window. This is clearly one of Melbourne's most compelling family homes!

Grand proportions including separate dining and two king-sized bedrooms serviced by a designer bathroom. Upstairs, a sensational children's precinct comprises three additional bedrooms, a stylish bathroom and large retreat/ studio or bedroom overlooking the treetops of Park Street from the sitting window.

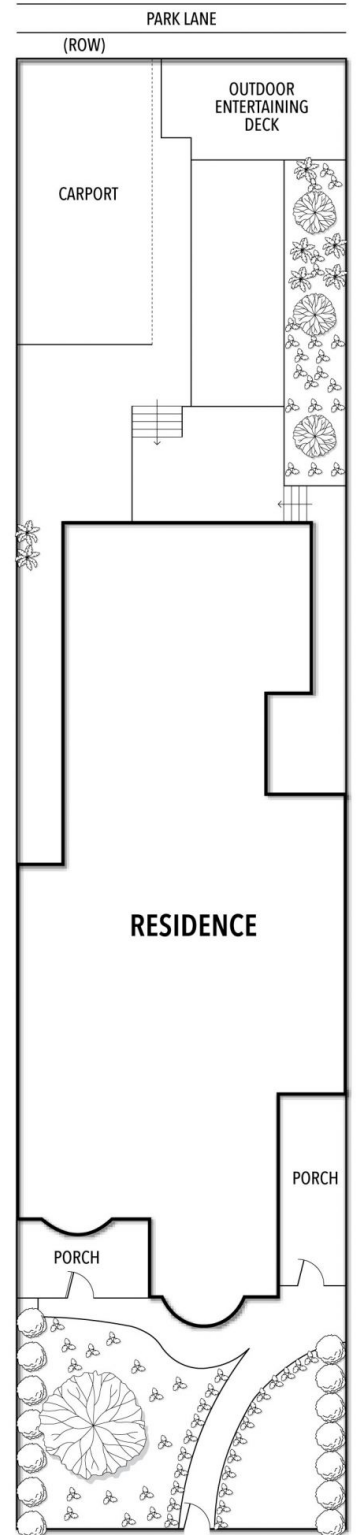
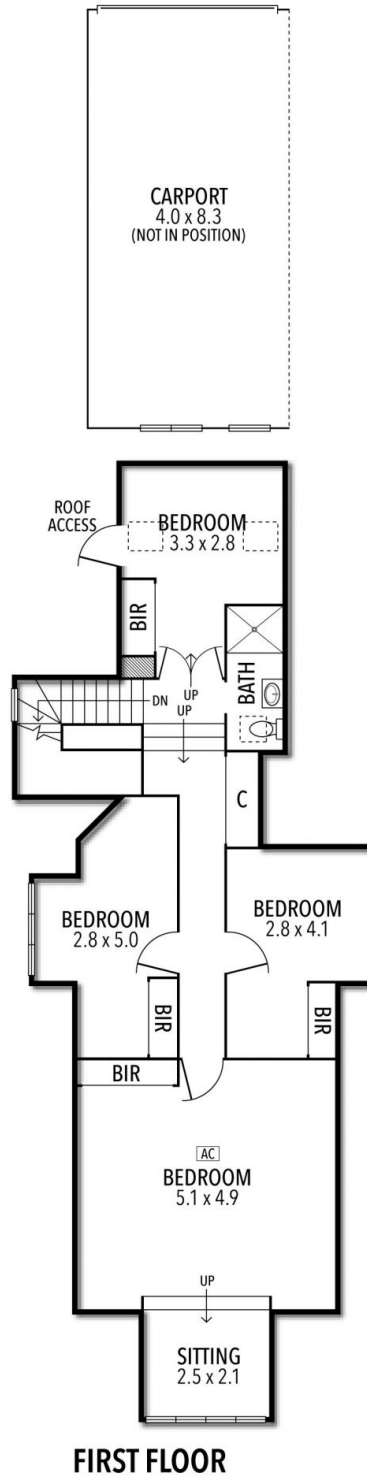
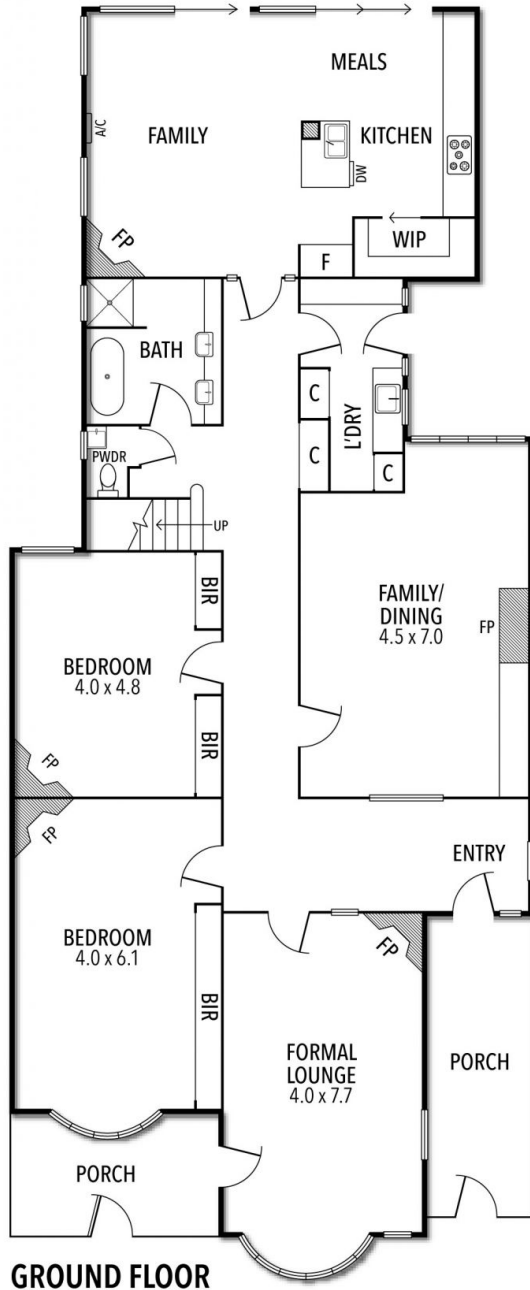
The north facing, open plan family area is set at the rear of the home is and drenched in

Graeme Wilson
0418315645
gwilson@wilsonagents.com.au

Grace Le-Francke
0419379998
glefrancke@wilsonagents.com.au



54 Park Street, St Kilda West



This plan has been prepared for marketing purposes only. Please note that all measurements & angles are approximate only, so it is strongly advised that all interested parties should undertake their own investigation into the accuracy of the supplied information. No representations or warranties of any nature whatsoever are given or attended.