



1/18 Marara Road CAULFIELD SOUTH

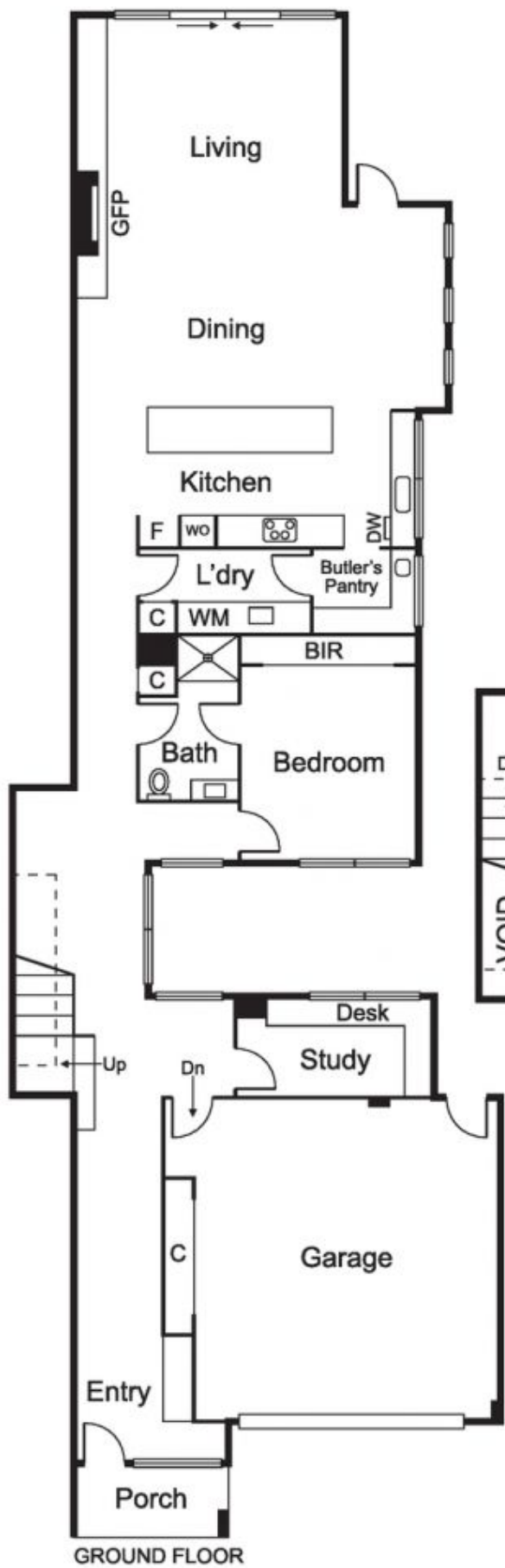
4 3 3

High End Luxury in a Parkside Locale

Setting the benchmark for designer family living, this brand new state of the art town residence epitomises contemporary excellence down to every last detail. An architectural masterpiece by Shoalhaven Developments in conjunction with Tom Koroneos Design showcases exquisite craftsmanship, uncompromising quality & captivating light filled spaces in a perfect parkside location. Engineered American oak floors & striking timber & stone elements flow from the entry through to an enticing Caesarstone Ilve equipped kitchen & butler's pantry overlooking a cleverly sunlit open plan living/dining zone with gas log fireplace, all blending superbly with a professionally landscaped courtyard ideal for outdoor living & entertaining. A fully fitted study, laundry & guest bedroom with built in robes & dual access fully tiled ensuite complete the stunning downstairs domain. Retreat upstairs to a spacious living area with built in cabinetry, a luxurious main bedroom with park views, dressing room with custom joinery & deluxe ensuite with freestanding bath, two further bedrooms with built in robes & a huge stylish central bathroom. Also featuring an oversized double garage with storage, VRV heating/cooling with 5 zones, alarm, CCTV, video intercom & in the sought after Caulfield South Primary School zone, close to

Joey Eckstein
0419419199
jeckstein@wilsonagents.com.au

Peter Fein
0418 528 888
peter@wilsonagents.com.au



GROUND FLOOR



FIRST FLOOR

