



**1/44 Fitzroy Street ST KILDA**

1 1

## "Kingsclere"

**\$ 510,000**

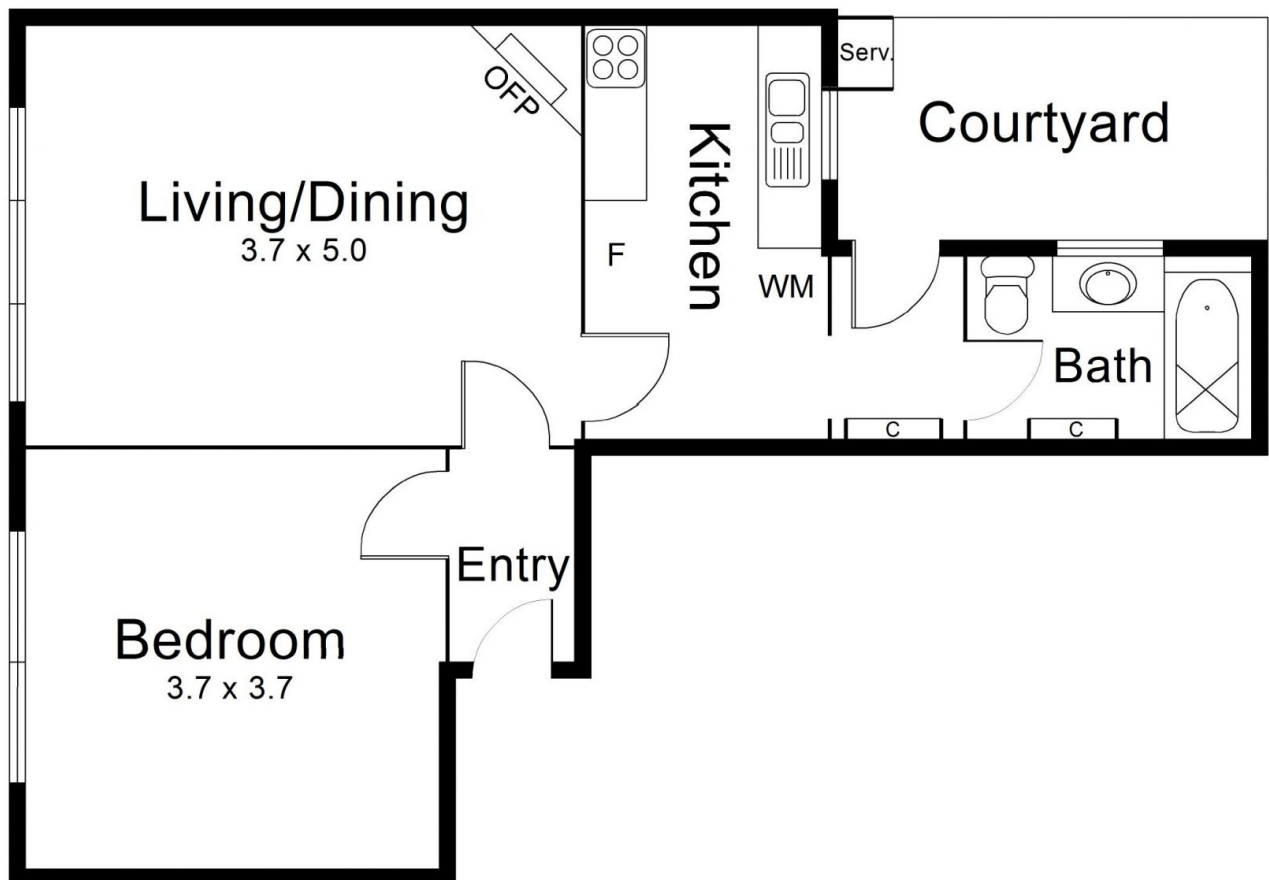
A spacious, front facing, ground floor apartment in the converted "Kingsclere" mansion development in the heart of St Kilda. With high ceilings and a dash of Parisian magic, this outstanding ground floor residence sets the benchmark for St Kilda apartment living.

Grace Le-Francke  
0419379998  
glefrancke@wilsonagents.com.au

The grand mansion converted 'Kingsclere' complex will be your private home base that is so secluded and peaceful that you won't even know the buzzing Fitzroy Street is literally steps away. A striking terrazzo foyer leads through into a serene garden courtyard, where the calming sound of the water feature will have you at ease. This is one of the most impressive, well maintained, iconic developments St Kilda has to offer.

Inside period detailing throughout such as original timber floors, soaring ceilings, and an open fireplace is sure to impress. A large living/meals zone and separate kitchen with gas cooking. The bedroom is king size with BIR's along with secure windows, and the bathroom is separate to the bedroom with shower over bath and laundry facilities.

1/44 Fitzroy Street, St Kilda



Internal : 52m<sup>2</sup> approx.

This plan has been prepared for marketing purposes only. Please note that all measurements & angles are approximate only, so it is strongly advised that all interested parties should undertake their own investigation into the accuracy of the supplied information.  
No representations or warranties of any nature whatsoever are given or attended.