



5 Herbert Place ALBERT PARK

2 1

Whatever Works Best!

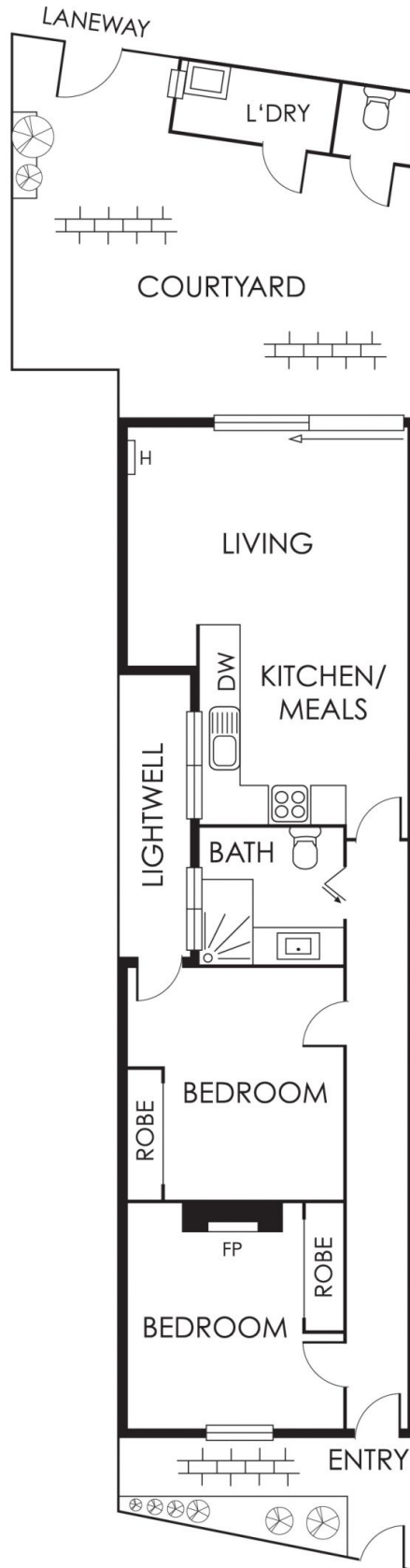
\$ 1,030,000

Perfect first home or sound investment in bricks and mortar presented in great condition throughout in this quaint Victorian row of 19th Century workers cottages. Retaining original charm, superbly located in a prized Albert Park location.

Graeme Wilson
0418315645
gwilson@wilsonagents.com.au

Comprising of arched hallway, two bedrooms, renovated bathroom with an open plan kitchen / living leading to a light filled rear paved garden with ROW.

What a brilliant find in a great location.



This plan has been prepared for marketing purposes only. Please note that all measurements & angles are approximate only, so it is strongly advised that all interested parties should undertake their own investigation into the accuracy of the supplied information. No representations or warranties of any nature whatsoever are given or intended.