



23 Hawsleigh Avenue ST KILDA EAST

3 1

Architecture Re-imagined

Designed by its Architect owners, this unique property combines immaculate contemporary design with old world charm in a fully renovated, solid brick, elevated Edwardian, situated in one of Balaclavas most sought after cul-de-sacs.

The classical Edwardian façade with bay window and charming front garden creates an inviting first impression. Upon entry, original wooden floors combine with soaring ceilings and period detailing throughout.

The three bedrooms, two with built in robes and free-standing joinery are serviced by a central bathroom with full height mosaic tiles, separate bath and rain shower and full floor to ceiling mirror. There is also a separate laundry with full height integrated storage.

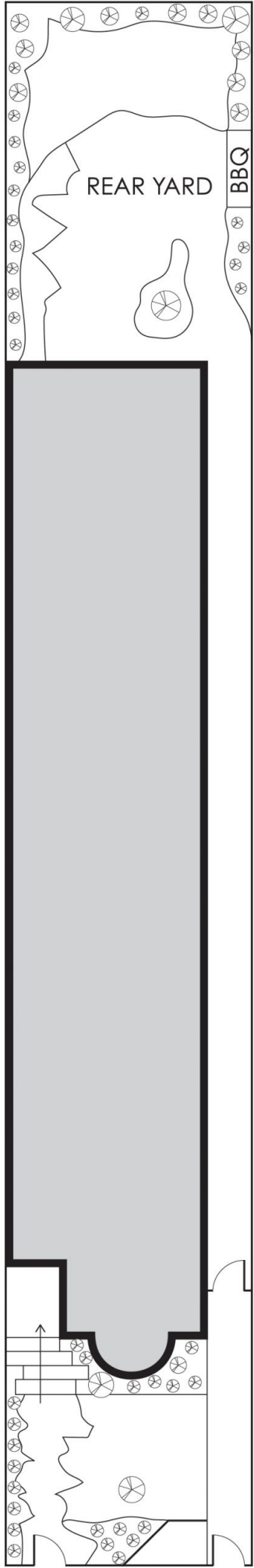
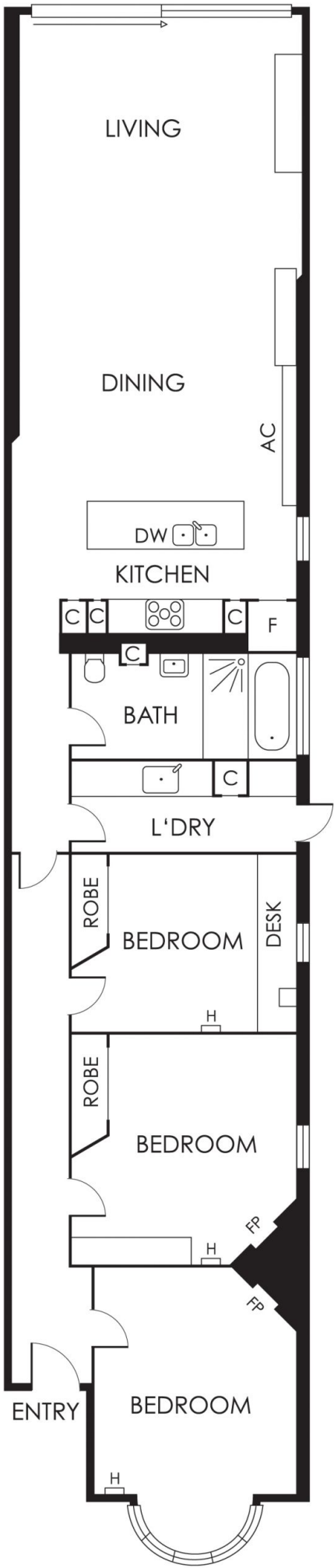
The kitchen has been designed with both form and function in mind, and the generous preparation space is complimented by substantial storage, gas cooking, concrete island bench and European appliances.

At the rear of the property is an immense open plan living and dining area with an

\$ 1,520,000

Graeme Wilson
0418315645
gwilson@wilsonagents.com.au

Grace Le-Francke
0419379998
glefrancke@wilsonagents.com.au



This plan has been prepared for marketing purposes only. Please note that all measurements & angles are approximate only, so it is strongly advised that all interested parties should undertake their own investigation into the accuracy of the supplied information. No representations or warranties of any nature whatsoever are given or intended.