



**12/26-28 Blessington Street ST KILDA**

**2** **1** **1**

**The Clarendon on Blessington**

**\$ 630,000**

Located on one of the most desirable treelined streets in St Kilda, this first floor art deco apartment in the "Clarendon", is just metres from St Kilda's Botanical Gardens, Acland Street and Blessington café strip.

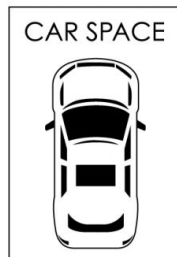
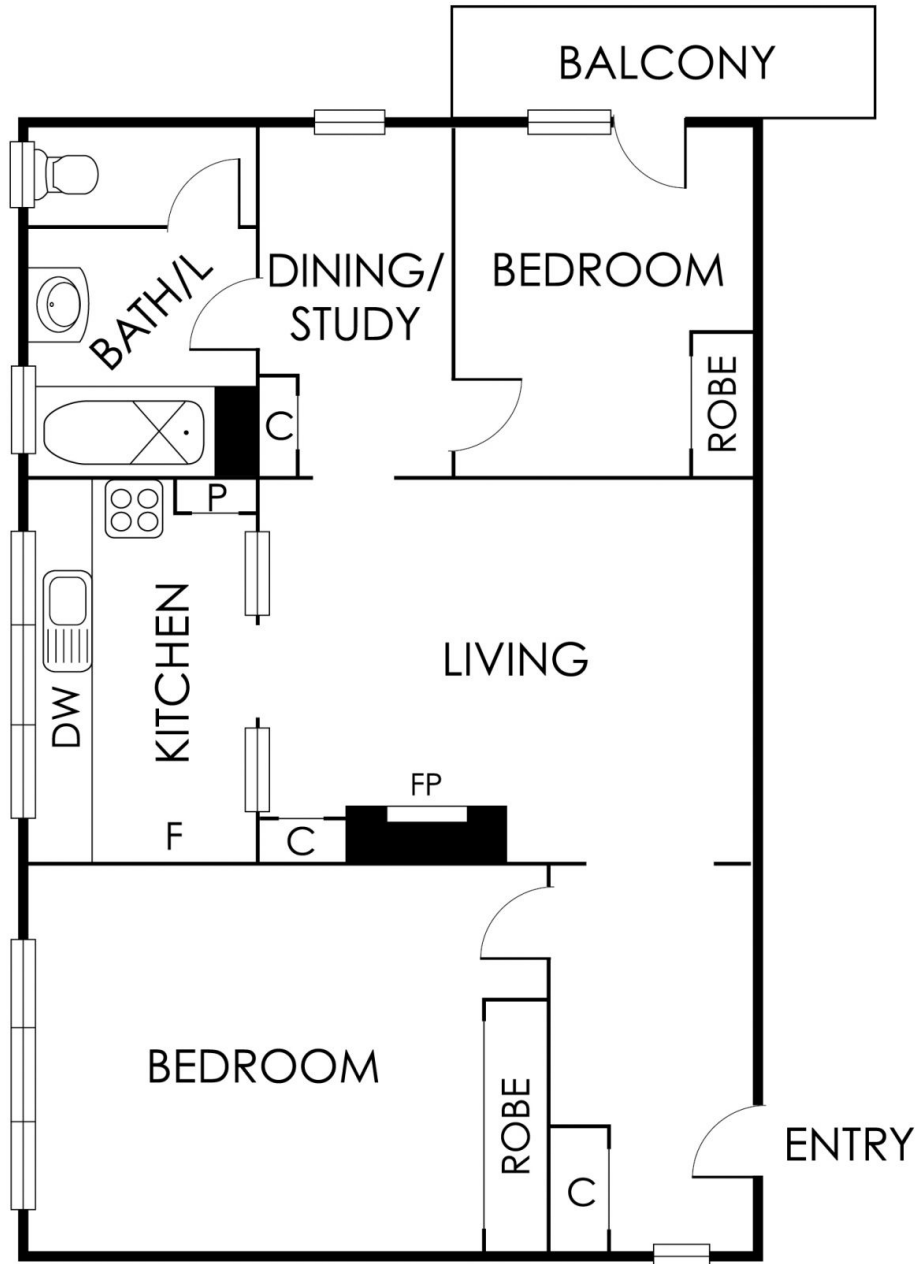
Graeme Wilson  
0418315645  
gwilson@wilsonagents.com.au

Surrounded by art deco apartments and period homes, this gorgeous 2 bedroom apartment retains much of its original period charm including oak floorboards throughout, decorative high ceilings, picture rails and an open fireplace.

Enter through the classic entrance hall to the spacious living area with an open fireplace and original cabinetry. The updated kitchen features new appliances and wall to wall north facing windows and adjoins a separate dining area or study.

The king-sized master bedroom features a built-in wardrobe and huge picture windows that drench the room in northern light, the second bedroom also has a built-in robe and access to a leafy private balcony.





(NOT TO SCALE AND NOT IN POSITION)



This plan has been prepared for marketing purposes only. Please note that all measurements & angles are approximate only, so it is strongly advised that all interested parties should undertake their own investigation into the accuracy of the supplied information. No representations or warranties of any nature whatsoever are given or intended.