



## 2/4 Celeste Court ST KILDA EAST

2 1 1

### Stylish Family-Sized Apartment

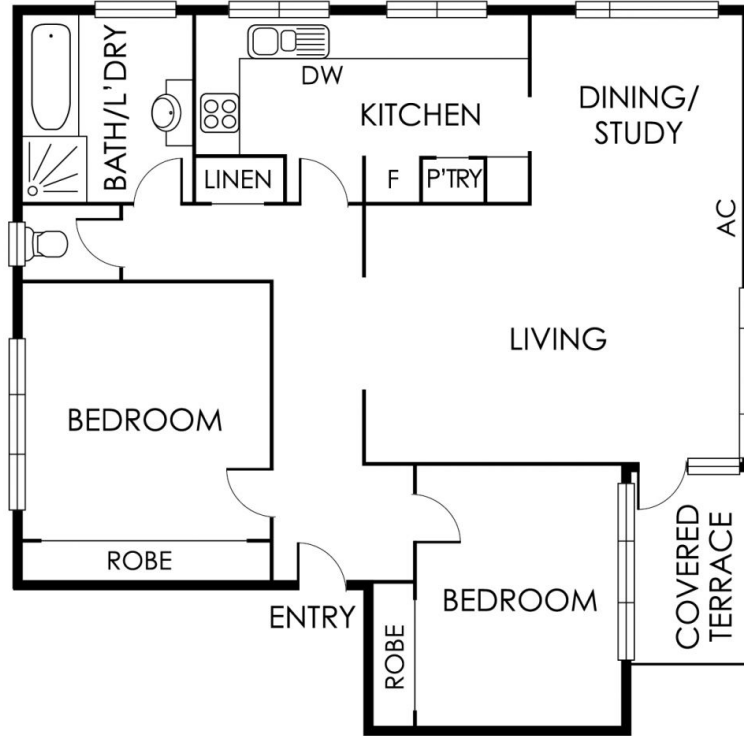
Located in a beautifully-kept boutique block of six, this elevated ground floor apartment is of house-sized proportions and flooded with natural light.

Set in a quiet cul-de-sac, this home is sure to impress with its expansive open plan living and dining, chef's kitchen with gas cooking and an abundance of storage, polished floorboards throughout, high ceilings, study nook and north-facing covered balcony.

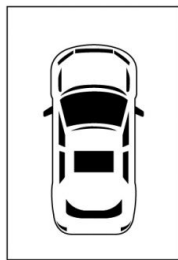
The master bedroom features floor to ceiling built-in robes and both bedrooms are well-proportioned and drenched with natural light from the oversized windows.

With Te-Arai Reserve and Playground only metres from your door and Alma Village offering trendy cafes and Woolworths supermarket a short stroll, this well-appointed home is ready for you to move in and start enjoying all the conveniences this fantastic location has to offer.

Graeme Wilson  
0418315645  
gwilson@wilsonagents.com.au



UNDERCOVER  
CAR SPACE



(NOT TO SCALE AND  
NOT IN POSITION)

PLUS ACCESS TO  
COMMUNAL STORAGE



This plan has been prepared for marketing purposes only. Please note that all measurements & angles are approximate only, so it is strongly advised that all interested parties should undertake their own investigation into the accuracy of the supplied information. No representations or warranties of any nature whatsoever are given or intended.