



3/65 Ormond Esplanade ELWOOD

2 3 1

€FORTUNA€ Spacious Beachfront Luxury

\$ 1,385,000

Located in the boutique "FORTUNA" development, directly opposite Elwood parkland and beach, this spacious, elevated beachfront residence is underpinned by luxury finishes.

With bay views, this massive home offers approx. 213m² of prestige living. The expansive open plan living opens on to the first of three large terraces delivering views of the bay and parkland.

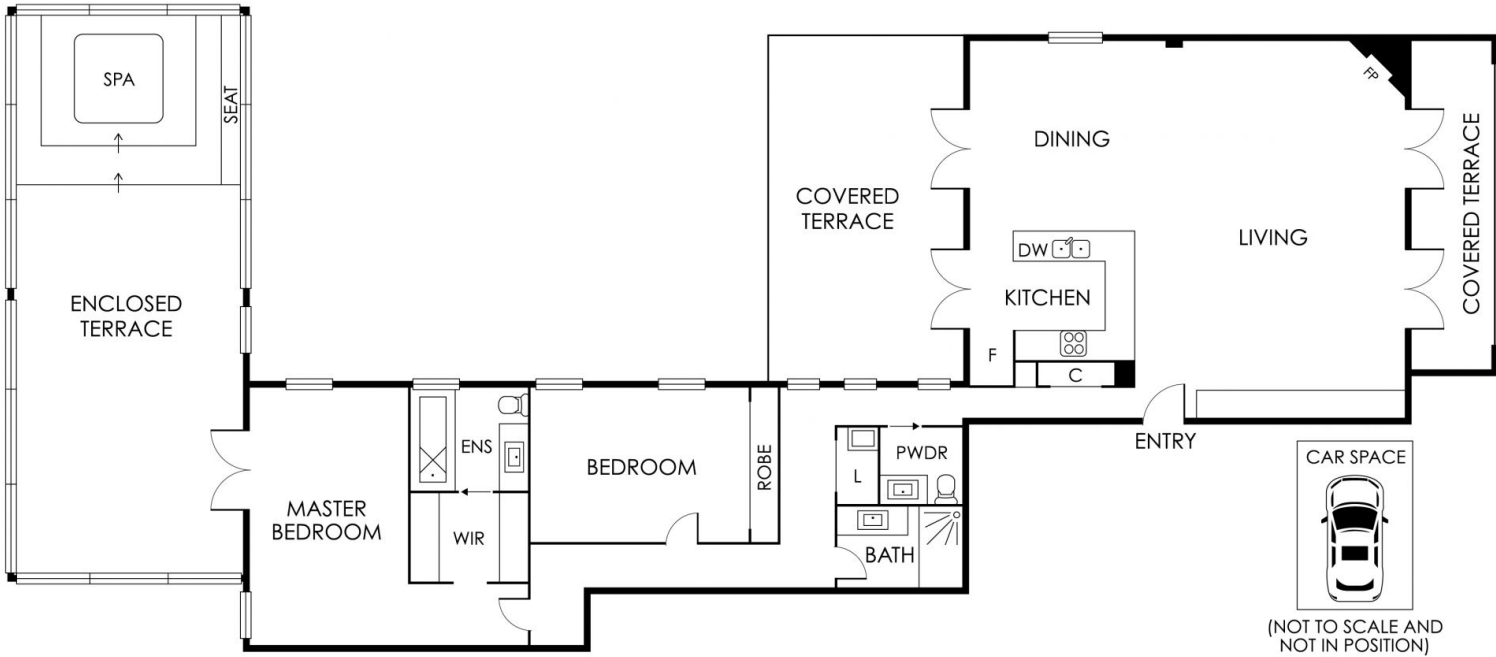
The kitchen and dining room has been designed with entertaining in mind, the expansive dining area has space for the whole family and leads on to the second north-facing covered outdoor terrace, ideal for summer BBQs.

The beautifully appointed master bedroom suite opens onto a versatile wintergarden or second living zone and features a 10 seater spa. The walk-through robe leads to a luxurious ensuite, with a deep stone bath. The generously proportioned second king-sized bedroom features wall to wall built-ins and is flooded with natural light.

Set in this idyllic location, this home is sure to impress with American oak herringbone parquetry floors and recessed ceilings, creating a sense of opulence and adding to this is the technologically advanced C-bus lighting and automatic blinds, gas fire place, ducted

Graeme Wilson
0418315645
gwilson@wilsonagents.com.au

Grace Le-Francke
0419379998
glefrancke@wilsonagents.com.au



This plan has been prepared for marketing purposes only. Please note that all measurements & angles are approximate only, so it is strongly advised that all interested parties should undertake their own investigation into the accuracy of the supplied information. No representations or warranties of any nature whatsoever are given or intended.