



## 213 Beaconsfield Parade MIDDLE PARK

4 3 2

**It's Not a House, It's a Home, a Family Home is Their "Castle"**

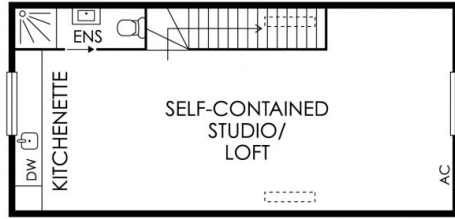
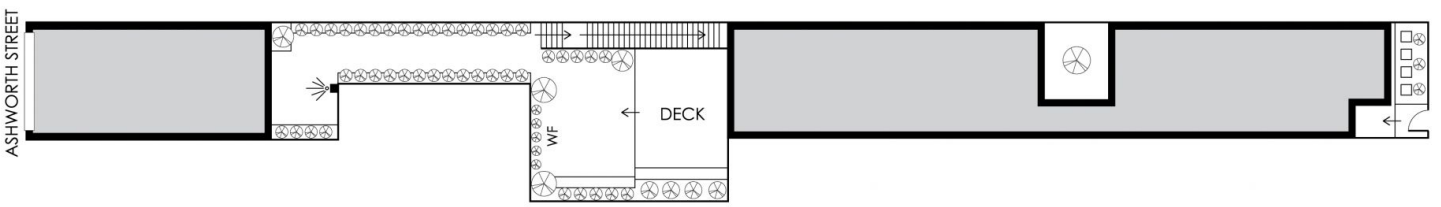
**\$ 5,300,000**

Displaying a harmonious dialogue between classic and contemporary architecture, this magnificent Victorian residence impressively showcases state of art design, high quality interiors and period details in comfortable and timeless style. On sizeable allotment of 319sqm, this terrace house has been impeccably retained and elevated to contemporary splendor by B.E Architecture. Modern yet rooted in its heritage past, it delivers elegance in the much sought after premium location of Middle Park.

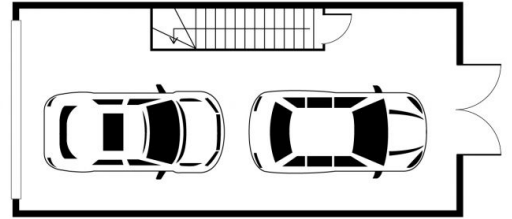
Graeme Wilson  
0418315645  
gwilson@wilsonagents.com.au

Grace Le-Francke  
0419379998  
glefrancke@wilsonagents.com.au

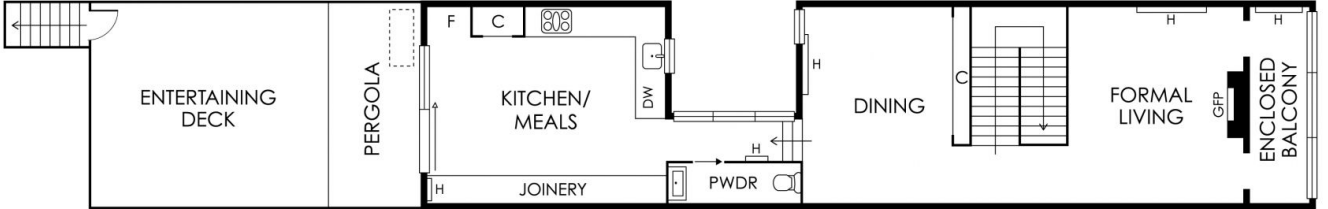
Enter to a wide arched hallway complimented with soaring ceilings and period detailing. The spacious study is enveloped in history, referring to the high ornate ceilings, built-in American Walnut joinery and magnificent archway framing the view of Port Philip Bay. The internal courtyard featuring an ever-changing Japanese Maple floods the home with natural light and divides the lower level into two sections - heritage and Contemporary. All 3 bedrooms have built-in robes and hydronic heating, while the 2 bathrooms feature quality Rogerseller tapware, creating a sense luxury and sophistication. The resort style master



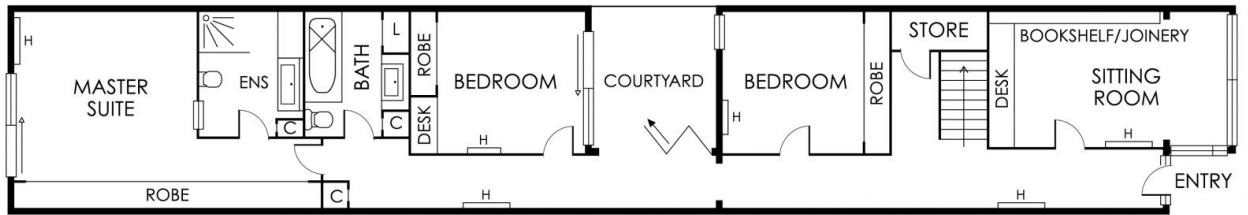
FIRST FLOOR



GROUND FLOOR



FIRST FLOOR



GROUND FLOOR



This plan has been prepared for marketing purposes only. Please note that all measurements & angles are approximate only, so it is strongly advised that all interested parties should undertake their own investigation into the accuracy of the supplied information. No representations or warranties of any nature whatsoever are given or intended.