



126 Victoria Avenue ALBERT PARK

4 2

Picture Perfect in A Pretty Perfect Position

From its picturesque street frontage to its immaculate interior and alluring private alfresco setting, this Victorian terrace provides a fabulously spacious environment for all to enjoy.

Resting beneath gloriously high ceilings adorned with roses, the impressively proportioned floor plan features a formal lounge, a study delivering the flexibility to be set up as a fourth bedroom if needed, and an open-plan arrangement of a large well-appointed kitchen, living room and atrium-style dining linking seamlessly to the generous paved backyard.

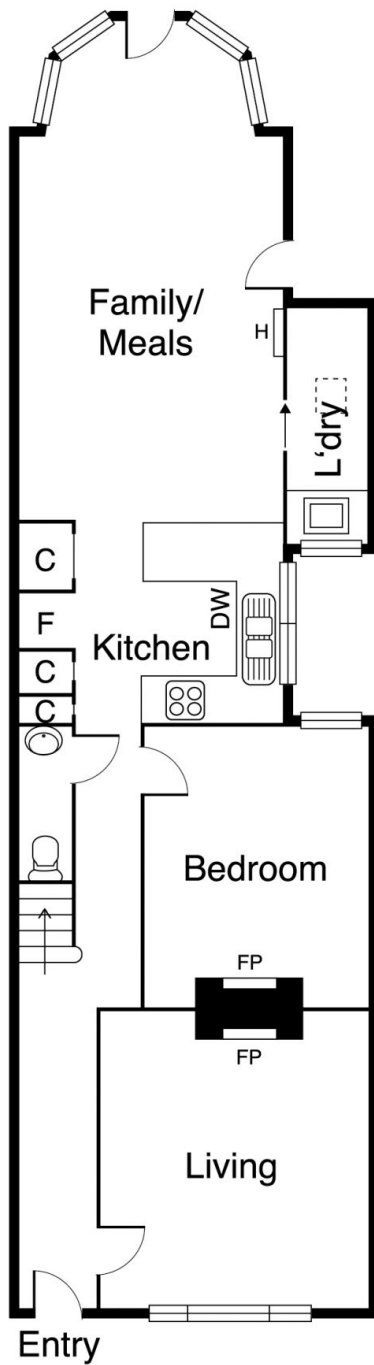
The upper level accommodates the main bedroom with ensuite bathroom, built-in robes and a balcony bathed in afternoon sunshine, two more bedrooms with built-in robes and a family bathroom. A powder room, laundry and a garden shed are further highlights.

Perfectly located to make the most of all the lifestyle benefits that Albert Park has to offer, the home enjoys a premier position close to Albert Park Village's café, boutiques and restaurants, the beach, trams, Albert Park Primary School, Albert Park College, Gas Works

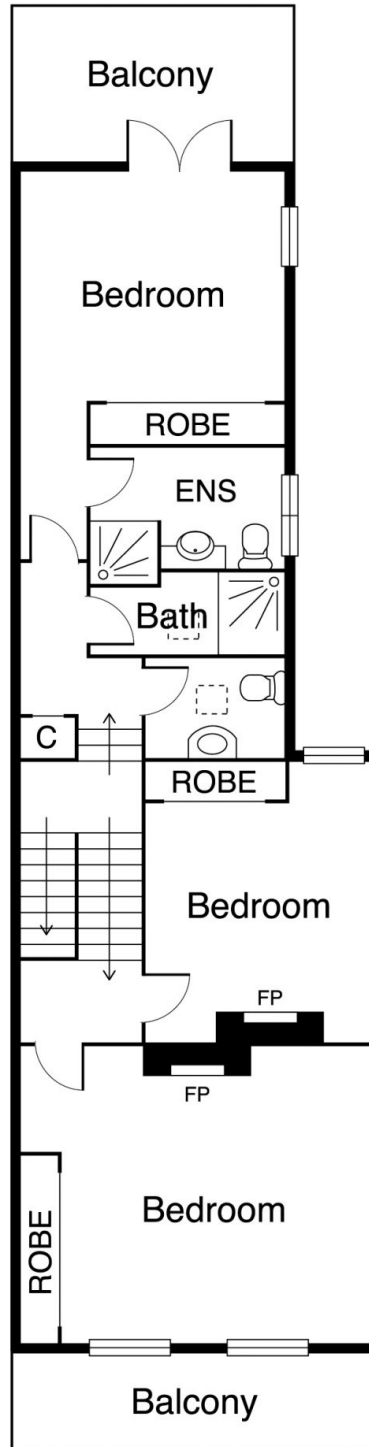
Graeme Wilson
0418315645
gwilson@wilsonagents.com.au



126 Victoria Avenue, Albert Park



Ground Floor



First Floor

