



38a Loch Avenue ST KILDA EAST

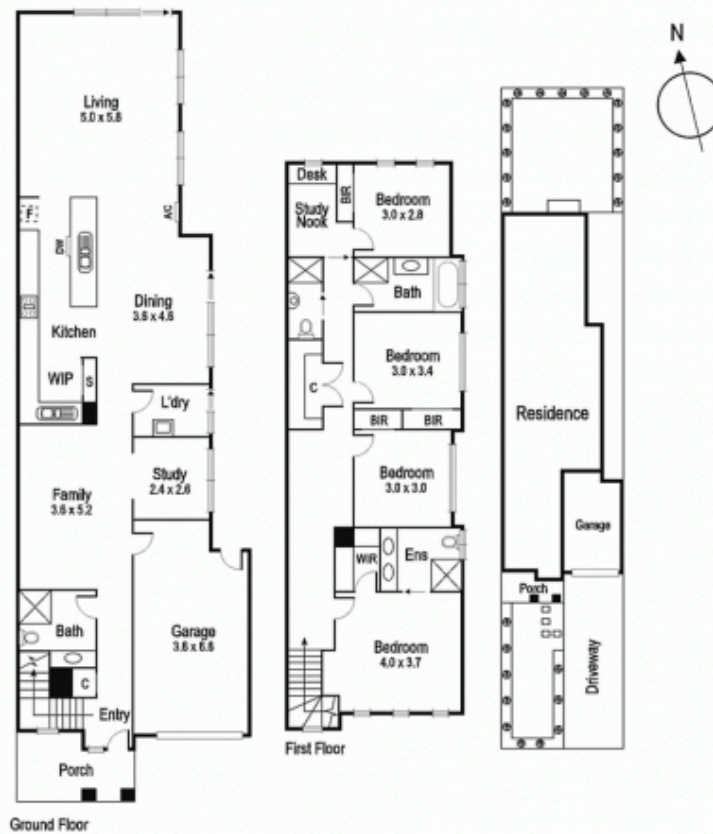
4 4 2

Spacious Family Living in a Fabulous Location

Featuring brilliant entertaining options this as new four bedroom, three bathroom plus powder room, two study, north-facing two-storey townhouse is sure to impress in this fantastic location on the doorstep of Greenmeadows Gardens. Designed for a quality low-maintenance lifestyle, the house-sized layout is sleek, streamlined & incorporates a study, relaxing sitting room and an expansive area for living, dining & entertaining flowing onto a north facing garden. The superbly equipped kitchen is fitted out with granite benchtops. Comprises a remote garage with internal access and additional off-street parking. This stress-free way of life can be yours to enjoy in an exclusive neighbourhood close to elite schools, bus stops, Ripponlea & Carlisle shopping strips & stations.

Joey Eckstein
0419419199
jeckstein@wilsonagents.com.au

Norma Evans
0422844666
nevans@wilsonagents.com.au



Ground Floor

Particulars herein, including floorplans, measurements and textures, are approximate and for illustrative purposes only. This information does not constitute any representation by the owner or agent and prospective buyers should view the property in person.